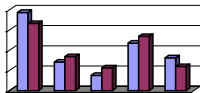


Texas A&M University

Retention & Graduation Report Fall 2002



Prepared by
Office of Institutional Studies and Planning
Dr. Cindy Dutschke, Director

TABLE OF CONTENTS

I.	Definitions.....	i	V.	Blinn TEAM Students	
II.	First-Time In College Full-Time (FTFT) Students			Summary	38
	1. Summaries			Detailed Demographics by Cohort.....	39
	First-Year Retention Rate	1	VI.	COLLEGE Retention/Graduation Rates for FTIC	
	Six-Year Graduation Rate.....	2		Six-Year Graduation	41
	Historical Comparison by Cohort Year	3		First-Year Retention Rates (%).....	52
	Historical Comparison by Gender	4		First-Year Retention.....	63
	Historical Comparison by	6	VII.	DEPARTMENT Retention/Graduation Rates for FTIC	
	2. Detailed Demographics by Cohort	8		Six-Year Graduation	74
III.	First-Time In College (FTIC) Students			First-Year Retention Rates (%).....	76
	Detailed Demographics by Cohort	15		First-Year Retention.....	78
IV.	Transfer Students		VIII.	MAJOR Retention/Graduation Rates for FTIC	
	Four-Year Graduation Rates	22		Six-Year Graduation	80
	Four-Year Graduation/Retention Rates	23		First-Year Retention Rates (%).....	83
	Historical Comparison by Gender	24		First-Year Retention.....	86
	Historical Comparison by Ethnicity.....	26			
	Historical Comparison by Demographics.....	28			
	Detailed Demographics by Cohort.....	29			

Definitions

Blinn Team: is a collaborative effort between TAMU and Blinn Junior College. Students in this program will complete a specified number of courses at each institution with a 3.0 to qualify for automatic admission to TAMU. They are classified as part-time students.

Ethnic Origin: is the code indicating the ethnic origin of the student. Students are classified as “International” if they are not citizens of the United States but are in the United States on a temporary basis and do not have the right to remain indefinitely. Non-citizen students, who are lawfully admitted for permanent residence, or Resident Aliens, are reported in the appropriate racial/ethnic category along with United States Citizens. The unknown classification is reserved for students that have not selected a racial/ethnic designation.

- White
- Black
- Hispanic
- Asian
- American Indian
- International
- Unknown

First Generation: neither parent graduated from a four year college.

First-Time in College (FTIC): an undergraduate, degree seeking student who applied and enrolled in college for the first time regardless of whether the student has acquired college level credit through testing, advanced placement or summer enrollment. This field is used only during the first semester of a student’s enrollment at TAMU.

First-Time in College Full-Time (FTFT): a first-time in college student enrolled for 12 or more hours during their first semester at TAMU. This field is used only during the first semester of a student’s enrollment at TAMU.

Gender: identifies a student as either “male” or “female”

Graduation: lists the number of recipients of an academic degree who successfully completed all the essential work of the curriculum thus marking the completion of studies.

Residency Status: categorizes students into one of the following three categories based on the state or foreign country in which the student has established legal residency at the time of application.

- Texas Resident
- Non-TX, US Resident
- Non-TX, Non-US Resident

Tuition Status: indicates a student's status for tuition purposes. (For specifics on the residence tuition policy, contact the Office of Admissions.)

Resident Tuition: students who pay "Resident Tuition" rates.

Non-Resident Tuition: students who pay "Non-Resident Tuition" rates.

Tuition Exemption/Waiver: students who pay "Resident Tuition" rates because they are granted a tuition exemption or waiver.

Retention: The number of students in a beginning fall cohort who return to the institution in a subsequent fall semester.

Retention/Graduation within COLLEGE/DEPARTMENT/MAJOR: Please **NOTE** that these metrics are very different from university retention rates shown in the rest of this Report! These rates show the number of students in a beginning fall cohort who return to the **same** College or Department or Major (depending on the report) in a subsequent fall semester. For example, if a student has changed their major, but stayed within the same department, then for the purposes of Retention within Major that student is considered to have "dropped-out," however the same student will be considered to have been retained at the Department and College (as well as University) levels. Therefore, it's normal for these numbers to be considerably lower than the university retention rates.

Top 10% Texas High School: Are the First-Time in College students who have graduated in the top 10% of their high school class and are either from a Texas high school or are Texas residents for tuition purposes.

First-Year Retention Rate for First-Time In College Full-Time (FTFT) Students^a

1994-2001 Cohorts		Cohort Year - First Year Retained							
		Fall 1994 - Fall 1995	Fall 1995 - Fall 1996	Fall 1996 - Fall 1997	Fall 1997 - Fall 1998	Fall 1998 - Fall 1999	Fall 1999 - Fall 2000	Fall 2000 - Fall 2001	Fall 2001 - Fall 2002
		%	%	%	%	%	%	%	%
Cohort Total		86.5%	87.6%	87.8%	87.8%	87.7%	88.5%	88.3%	89.6%
Gender	Female	87.7%	88.5%	88.1%	89.1%	88.9%	89.8%	89.2%	90.0%
	Male	85.3%	86.7%	87.5%	86.4%	86.6%	87.1%	87.4%	89.1%
Ethnic Origin	White	87.8%	89.4%	88.9%	88.1%	88.7%	88.8%	89.3%	90.5%
	Black	82.9%	86.1%	85.7%	85.3%	83.2%	83.3%	82.4%	87.8%
	Hispanic	81.1%	78.0%	80.5%	84.9%	81.3%	86.6%	81.1%	84.2%
	Asian	86.3%	91.0%	87.5%	89.2%	88.8%	90.0%	91.6%	86.5%
	American Indian	73.3%	83.3%	91.7%	86.2%	76.3%	78.8%	84.8%	77.8%
	International	85.4%	92.9%	91.4%	90.7%	90.7%	86.5%	100.0%	100.0%
	Unknown					84.5%	92.5%	88.3%	88.9%
	Tuition Status	Resident Tuition	86.2%	87.7%	87.7%	87.5%	87.6%	88.4%	88.5%
	Non-Resident	82.6%	79.5%	87.0%	85.6%	85.5%	82.2%	82.1%	86.4%
	Tuition Waiver	91.5%	90.4%	89.0%	92.0%	91.1%	91.3%	87.8%	85.7%
Residency Status	In-State	86.5%	87.9%	87.9%	87.8%	87.7%	88.5%	88.5%	89.7%
	Out-of-State	86.8%	83.5%	86.5%	87.5%	87.2%	85.7%	85.2%	86.9%
	Out-of-US	88.5%	93.3%	90.9%	90.9%	94.0%	89.9%	100.0%	88.9%
Top 10% Texas High School ^b	No						85.9%	84.7%	87.3%
	Yes						91.6%	92.2%	91.6%
First Generation ^{c,b}	No						89.3%	90.9%	91.8%
	Unknown						83.0%	86.7%	82.7%
	Yes						87.8%	81.6%	84.2%

Prepared by OISP, 19 Mar 03

- a. These data are generated by a new procedure. A better method for tracking changes and corrections of Social Security Number has resulted in generally higher retention and graduation rates than those TAMU reported to the LBB as Key Performance Measures. The Key Measures may be found on OISP website under Reports/Miscellaneous/LBB Performance Measures - Annual.
- b. Top 10% and First Generation data are not available in OISP data warehouse before Fall 1999.
- c. First Generation - neither parent graduated from college.

Six-Year Graduation Rate for First-Time In College Full-Time (FTFT) Students^a

1994-1996 Cohorts		Cohort Year - Graduation Year		
		1994 - 2000	1995 - 2001	1996 - 2002
		%	%	%
Cohort Total		69.1%	74.2%	74.9%
Gender	Female	73.5%	78.4%	78.8%
	Male	65.0%	70.0%	70.8%
Ethnic Origin	White	72.3%	77.2%	77.2%
	Black	53.1%	65.8%	63.9%
	Hispanic	60.0%	61.4%	62.4%
	Asian	59.9%	73.7%	70.5%
	American Indian	66.7%	62.5%	70.8%
	International	56.3%	75.0%	80.0%
Tuition Status	Resident Tuition	69.1%	74.2%	74.8%
	Non-Resident	58.2%	65.6%	68.1%
	Tuition Waiver	73.0%	78.3%	80.0%
Residency Status	In-State	69.4%	74.5%	75.2%
	Out-of-State	65.6%	70.0%	70.1%
	Out-of-US	63.9%	73.3%	79.5%

Prepared by OISP, 19 Mar 03

a. These data are generated by a new procedure. A better method for tracking changes and corrections of Social Security Number has resulted in generally higher retention and graduation rates than those TAMU reported to the LBB as Key Performance Measures. The Key Measures may be found on OISP website under Reports/Miscellaneous/LBB Performance Measures - Annual.

**Historical Comparison of Fall 1996 through Fall 2002 Cohorts
First-Time In College Full-Time (FTFT) Students^a
Six Years or From Cohort Year to Fall 2002**

Fall 1996 through Fall 2002 Cohorts Comparison			Cohort Total	First Year	Second Year	Third Year	Fourth Year	Fifth Year	Sixth Year					
			#	Retention	Graduation	Retention	Graduation	Retention	Graduation	Retention	Graduation	Retention	Graduation	Retention
All Terms	#	45,934	34,733	18	27,515	359	21,039	6,234	9,326	8,500	1,158	4,738	151	
Average	%	100.0%	88.3%	.1%	83.2%	1.4%	79.4%	31.4%	47.0%	68.0%	9.3%	74.9%	2.4%	
Cohort Year	1996	#	6,326	5,555	5	5,204	85	4,977	1,931	3,021	4,283	581	4,738	151
		%	100.0%	87.8%	.1%	82.3%	1.3%	78.7%	30.5%	47.8%	67.7%	9.2%	74.9%	2.4%
1997	#	6,180	5,426	2	5,112	92	4,871	1,953	2,897	4,217	577			
	%	100.0%	87.8%	.0%	82.7%	1.5%	78.8%	31.6%	46.9%	68.2%	9.3%			
1998	#	7,322	6,425	3	6,068	82	5,836	2,350	3,408					
	%	100.0%	87.7%	.0%	82.9%	1.1%	79.7%	32.1%	46.5%					
1999	#	6,659	5,891	3	5,628	100	5,355							
	%	100.0%	88.5%	.0%	84.5%	1.5%	80.4%							
2000	#	6,589	5,821	5	5,503									
	%	100.0%	88.3%	.1%	83.5%									
2001	#	6,269	5,615											
	%	100.0%	89.6%											
2002	#	6,589												
	%	100.0%												

Prepared by OISP, 19 Mar 03

a. These data are generated by a new procedure. A better method for tracking changes and corrections of Social Security Number has resulted in generally higher retention and graduation rates than those TAMU reported to the LBB as Key Performance Measures. The Key Measures may be found on OISP website under Reports/Miscellaneous/LBB Performance Measures - Annual.

**Historical Comparison of Fall 1996 through Fall 2002 Cohorts
First-Time In College Full-Time (FTFT) Students by Gender^a
Six Years or From Cohort Year to Fall 2002**

Rate (%)

Fall 1996 through Fall 2002 Cohorts			First Year	Second Year		Third Year		Fourth Year		Fifth Year		Sixth Year	
			Retention	Graduation	Retention	Graduation	Retention	Graduation	Retention	Graduation	Retention	Graduation	Retention
Gender	Female	1996	88.1%	.1%	83.7%	1.9%	80.0%	40.6%	39.7%	74.4%	5.4%	78.8%	1.3%
		1997	89.1%	.0%	84.6%	2.0%	81.0%	42.2%	38.8%	75.4%	5.8%		
		1998	88.9%	.0%	85.2%	1.5%	81.8%	42.4%	39.4%				
		1999	89.8%	.0%	86.3%	2.1%	82.0%						
		2000	89.2%	.1%	84.3%								
		2001	90.0%										
	Male	1996	87.5%	.0%	80.8%	.8%	77.3%	20.1%	56.0%	60.7%	13.1%	70.8%	3.5%
		1997	86.4%	.0%	80.8%	.9%	76.5%	20.5%	55.3%	60.7%	13.1%		
		1998	86.6%	.1%	80.5%	.7%	77.5%	21.6%	53.9%				
		1999	87.1%	.1%	82.6%	.9%	78.7%						
		2000	87.4%	.0%	82.7%								
		2001	89.1%										

Prepared by OISP, 19 Mar 03

a. These data are generated by a new procedure. A better method for tracking changes and corrections of Social Security Number has resulted in generally higher retention and graduation rates than those TAMU reported to the LBB as Key Performance Measures. The Key Measures may be found on OISP website under Reports/Miscellaneous/LBB Performance Measures - Annual.

**Historical Comparison of Fall 1996 through Fall 2002 Cohorts
First-Time In College Full-Time (FTFT) Students by Gender
Six Years or From Cohort Year to Fall 2002^a**

Headcount

Fall 1996 through Fall 2002 Cohorts			#	First Year	Second Year		Third Year		Fourth Year		Fifth Year		Sixth Year	
				Retention	Graduation	Retention	Graduation	Retention	Graduation	Retention	Graduation	Retention	Graduation	Retention
Gender	Female	1996	3,218	2,834	4	2,693	61	2,575	1,306	1,279	2,395	175	2,537	42
		1997	3,161	2,818	1	2,673	64	2,560	1,334	1,227	2,383	183		
		1998	3,701	3,291	1	3,152	57	3,029	1,568	1,458				
		1999	3,419	3,070	1	2,951	71	2,805						
		2000	3,451	3,077	4	2,909								
		2001	3,264	2,939										
		2002	3,005	2,676										
	Male	1996	3,108	2,721	1	2,511	24	2,402	625	1,742	1,888	406	2,201	109
		1997	3,019	2,608	1	2,439	28	2,311	619	1,670	1,834	394		
		1998	3,621	3,134	2	2,916	25	2,807	782	1,950				
		1999	3,240	2,821	2	2,677	29	2,550						
		2000	3,138	2,744	1	2,594								
		2001	3,005	2,676										
		2002	3,005	2,676										

Prepared by OISP, 19 Mar 03

a. These data are generated by a new procedure. A better method for tracking changes and corrections of Social Security Number has resulted in generally higher retention and graduation rates than those TAMU reported to the LBB as Key Performance Measures. The Key Measures may be found on OISP website under Reports/Miscellaneous/LBB Performance Measures - Annual.

**Historical Comparison of Fall 1996 through Fall 2002 Cohorts
First-Time In College Full-Time (FTFT) Students by Ethnicity
Six Years or From Cohort Year to Fall 2002^a**

Rate (%)

Fall 1996 through Fall 2002 Cohorts			First Year	Second Year		Third Year		Fourth Year		Fifth Year		Sixth Year	
			Retention	Graduation	Retention	Graduation	Retention	Graduation	Retention	Graduation	Retention	Graduation	Retention
Ethnic Origin	White	1996	88.9%	.1%	83.9%	1.4%	80.6%	32.1%	48.2%	70.3%	8.8%	77.2%	2.1%
		1997	88.1%	.0%	83.5%	1.5%	79.8%	32.5%	47.2%	70.3%	8.7%		
		1998	88.7%	.0%	83.9%	1.1%	80.9%	33.5%	46.6%				
		1999	88.8%	.0%	85.3%	1.5%	81.6%						
		2000	89.3%	.0%	85.1%								
	2001	90.5%											
	Black	1996	85.7%		76.1%	.4%	72.6%	20.4%	52.2%	56.5%	13.9%	63.9%	6.1%
		1997	85.3%		78.0%		72.3%	16.4%	49.2%	44.6%	15.8%		
		1998	83.2%		81.2%		78.7%	21.8%	55.3%				
		1999	83.3%		78.3%	1.1%	70.0%						
		2000	82.4%		73.5%								
	2001	87.8%											
	Hispanic	1996	80.5%		73.6%	1.0%	68.0%	21.9%	44.7%	53.5%	10.5%	62.4%	2.7%
		1997	84.9%		77.8%	.7%	75.0%	26.7%	46.2%	60.8%	11.3%		
		1998	81.3%	.1%	75.0%	.9%	71.4%	23.5%	47.5%				
		1999	86.6%		81.2%	.9%	77.5%						
		2000	81.1%	.3%	74.4%								
	2001	84.2%											
	Asian	1996	87.5%	1.1%	78.4%	1.7%	72.7%	28.4%	44.9%	63.6%	8.0%	70.5%	2.8%
		1997	89.2%		80.3%	4.5%	71.3%	35.0%	39.0%	61.9%	11.2%		
		1998	88.8%		82.2%	1.6%	77.1%	30.6%	45.3%				
1999		90.0%	.9%	80.5%	4.3%	74.5%							
2000		91.6%	.4%	85.5%									
2001	86.5%												
American Indian	1996	91.7%		83.3%		75.0%	41.7%	33.3%	62.5%	20.8%	70.8%	12.5%	
	1997	86.2%		82.8%	3.4%	82.8%	27.6%	55.2%	55.2%	27.6%			
	1998	76.3%		65.8%		63.2%	15.8%	47.4%					
	1999	78.8%		72.7%		66.7%							
	2000	84.8%		84.8%									
2001	77.8%												
International	1996	91.4%		80.0%	2.9%	77.1%	45.7%	34.3%	68.6%	11.4%	80.0%		
	1997	90.7%		86.0%	4.7%	74.4%	39.5%	44.2%	67.4%	11.6%			
	1998	90.7%		88.9%	1.9%	79.6%	25.9%	18.5%					
	1999	86.5%		78.4%		32.4%							
	2000	100.0%		100%									
2001	100.0%												
Unknown	1998	84.5%		82.5%	2.1%	76.3%	37.1%	39.2%					
	1999	92.5%		87.5%	1.3%	86.3%							
	2000	88.3%	.8%	74.2%									
	2001	88.9%											

Prepared by OISP, 19 Mar 03

a. These data are generated by a new procedure. A better method for tracking changes and corrections of Social Security Number has resulted in generally higher retention and graduation rates than those TAMU reported to the LBB as Key Performance Measures. The Key Measures may be found on OISP website under Reports/Miscellaneous/LBB Performance Measures - Annual.

**Historical Comparison of Fall 1996 through Fall 2002 Cohorts
First-Time In College Full-Time (FTFT) Students by Ethnicity
Six Years or From Cohort Year to Fall 2002^a**

Headcount

Fall 1996 through Fall 2002 Cohorts			#	First Year		Second Year		Third Year		Fourth Year		Fifth Year		Sixth Year	
				Retention	Graduation	Retention	Graduation	Retention	Graduation	Retention	Graduation	Retention	Graduation	Retention	Graduation
Ethnic Origin	White	1996	5,154	4,581	3	4,323	73	4,156	1,653	2,486	3,624	452	3,981	110	
		1997	5,104	4,499	2	4,264	75	4,075	1,660	2,409	3,588	443			
		1998	6,011	5,330	2	5,043	69	4,865	2,015	2,799					
		1999	5,529	4,908	1	4,716	82	4,513							
		2000	5,346	4,773	1	4,547									
	2001	5,149	4,660												
	Black	1996	230	197		175	1	167	47	120	130	32	147	14	
		1997	177	151		138		128	29	87	79	28			
		1998	197	164		160		155	43	109					
		1999	180	150		141	2	126							
		2000	170	140		125									
	2001	189	166												
	Hispanic	1996	707	569		520	7	481	155	316	378	74	441	19	
		1997	604	513		470	4	453	161	279	367	68			
		1998	667	542	1	500	6	476	157	317					
		1999	569	493		462	5	441							
		2000	663	538	2	493									
	2001	647	545												
	Asian	1996	176	154	2	138	3	128	50	79	112	14	124	5	
		1997	223	199		179	10	159	78	87	138	25			
1998		258	229		212	4	199	79	117						
1999		231	208	2	186	10	172								
2000		249	228	1	213										
2001	207	179													
American Indian	1996	24	22		20		18	10	8	15	5	17	3		
	1997	29	25		24	1	24	8	16	16	8				
	1998	38	29		25		24	6	18						
	1999	33	26		24		22								
	2000	33	28		28										
2001	36	28													
International	1996	35	32		28	1	27	16	12	24	4	28			
	1997	43	39		37	2	32	17	19	29	5				
	1998	54	49		48	1	43	14	10						
	1999	37	32		29		12								
	2000	8	8		8										
2001	5	5													
Unknown	1998	97	82		80	2	74	36	38						
	1999	80	74		70	1	69								
	2000	120	106	1	89										
	2001	36	32												

Prepared by OISP, 19 Mar 03

a. These data are generated by a new procedure. A better method for tracking changes and corrections of Social Security Number has resulted in generally higher retention and graduation rates than those TAMU reported to the LBB as Key Performance Measures. The Key Measures may be found on OISP website under Reports/Miscellaneous/LBB Performance Measures - Annual.

First-Time In College Full-Time (FTFT) Student Headcount Retention/Graduation Rates^{a,b}

Cohort Year 2002

Demographic Summary Headcount			Cohort Total	First Year	Second Year	Third Year	Fourth Year	Fifth Year	Sixth Year			
			#	Retention	Graduation	Retention	Graduation	Retention	Graduation	Retention	Graduation	Retention
University Total	#		6,589									
	%		100.0%									
Gender	Female	#	3,528									
		%	100.0%									
	Male	#	3,061									
		%	100.0%									
Ethnic Origin	White	#	5,445									
		%	100.0%									
	Black	#	178									
		%	100.0%									
	Hispanic	#	638									
		%	100.0%									
	Asian	#	225									
		%	100.0%									
	American Indian	#	24									
		%	100.0%									
	International	#	48									
		%	100.0%									
	Unknown	#	31									
		%	100.0%									
Tuition Status	Resident Tuition	#	6,234									
		%	100.0%									
	Non-Resident Tuition	#	168									
		%	100.0%									
Residency Status	In-State	#	6,259									
		%	100.0%									
	Out-of-State	#	276									
		%	100.0%									
	Out-of-US	#	54									
		%	100.0%									
Top 10% Texas High School ^c	No	#	3,233									
		%	100.0%									
	Yes	#	3,356									
		%	100.0%									
First Generation ^c	No	#	4,753									
		%	100.0%									
	Unknown	#	138									
		%	100.0%									
	Yes	#	1,698									
		%	100.0%									

Prepared by OISP, 19 Mar 03

a. These data are generated by a new procedure. A better method for tracking changes and corrections of Social Security Number has resulted in generally higher retention and graduation rates than those TAMU reported to the LBB as Key Performance Measures. The Key Measures may be found on OISP website under Reports/Miscellaneous/LBB Performance Measures - Annual.

b. Full-Time students are registered for 12 or more credit hours in their first semester at TAMU.

c. Top 10% and First Generation data are not available in OISP data warehouse before Fall 1999.

First-Time In College Full-Time (FTFT) Student Headcount Retention/Graduation Rates^{a,b}

Cohort Year 2001

Demographic Summary Headcount			Cohort Total	First Year	Second Year	Third Year	Fourth Year	Fifth Year	Sixth Year			
			#	Retention	Graduation	Retention	Graduation	Retention	Graduation	Retention	Graduation	Retention
University Total	#		6,269	5,615								
	%		100.0%	89.6%								
Gender	Female	#	3,264	2,939								
		%	100.0%	90.0%								
	Male	#	3,005	2,676								
		%	100.0%	89.1%								
Ethnic Origin	White	#	5,149	4,660								
		%	100.0%	90.5%								
	Black	#	189	166								
		%	100.0%	87.8%								
	Hispanic	#	647	545								
		%	100.0%	84.2%								
	Asian	#	207	179								
		%	100.0%	86.5%								
	American Indian	#	36	28								
		%	100.0%	77.8%								
	International	#	5	5								
		%	100.0%	100.0%								
	Unknown	#	36	32								
		%	100.0%	88.9%								
Tuition Status	Resident Tuition	#	5,968	5,356								
		%	100.0%	89.7%								
	Non-Resident Tuition	#	154	133								
		%	100.0%	86.4%								
	Waiver	#	147	126								
		%	100.0%	85.7%								
Residency Status	In-State	#	6,000	5,381								
		%	100.0%	89.7%								
	Out-of-State	#	260	226								
		%	100.0%	86.9%								
	Out-of-US	#	9	8								
		%	100.0%	88.9%								
Top 10% Texas High School ^c	No	#	2,896	2,527								
		%	100.0%	87.3%								
	Yes	#	3,373	3,088								
		%	100.0%	91.6%								
First Generation ^c	No	#	4,462	4,095								
		%	100.0%	91.8%								
	Unknown	#	81	67								
		%	100.0%	82.7%								
	Yes	#	1,726	1,453								
		%	100.0%	84.2%								

Prepared by OISP, 19 Mar 03

a. These data are generated by a new procedure. A better method for tracking changes and corrections of Social Security Number has resulted in generally higher retention and graduation rates than those TAMU reported to the LBB as Key Performance Measures. The Key Measures may be found on OISP website under Reports/Miscellaneous/LBB Performance Measures - Annual.

b. Full-Time students are registered for 12 or more credit hours in their first semester at TAMU.

c. Top 10% and First Generation data are not available in OISP data warehouse before Fall 1999.

First-Time In College Full-Time (FTFT) Student Headcount Retention/Graduation Rates^{a,b}

Cohort Year 2000

Demographic Summary Headcount			Cohort Total	First Year	Second Year	Third Year	Fourth Year	Fifth Year	Sixth Year			
			#	Retention	Graduation	Retention	Graduation	Retention	Graduation	Retention	Graduation	Retention
University Total	#		6,589	5,821	5	5,503						
	%		100.0%	88.3%	.1%	83.5%						
Gender	Female	#	3,451	3,077	4	2,909						
		%	100.0%	89.2%	.1%	84.3%						
	Male	#	3,138	2,744	1	2,594						
		%	100.0%	87.4%	.0%	82.7%						
Ethnic Origin	White	#	5,346	4,773	1	4,547						
		%	100.0%	89.3%	.0%	85.1%						
	Black	#	170	140		125						
		%	100.0%	82.4%		73.5%						
	Hispanic	#	663	538	2	493						
		%	100.0%	81.1%	.3%	74.4%						
	Asian	#	249	228	1	213						
		%	100.0%	91.6%	.4%	85.5%						
	American Indian	#	33	28		28						
		%	100.0%	84.8%		84.8%						
	International	#	8	8		8						
		%	100.0%	100.0%		100.0%						
	Unknown	#	120	106	1	89						
		%	100.0%	88.3%	.8%	74.2%						
Tuition Status	Resident Tuition	#	6,276	5,553	5	5,245						
		%	100.0%	88.5%	.1%	83.6%						
	Non-Resident	#	117	96		91						
		%	100.0%	82.1%		77.8%						
	Tuition Waiver	#	196	172		167						
		%	100.0%	87.8%		85.2%						
Residency Status	In-State	#	6,276	5,553	5	5,245						
		%	100.0%	88.5%	.1%	83.6%						
	Out-of-State	#	304	259		250						
		%	100.0%	85.2%		82.2%						
	Out-of-US	#	9	9		8						
		%	100.0%	100.0%		88.9%						
Top 10% Texas High School ^c	No	#	3,373	2,857	3	2,668						
		%	100.0%	84.7%	.1%	79.1%						
	Yes	#	3,216	2,964	2	2,835						
		%	100.0%	92.2%	.1%	88.2%						
First Generation ^c	No	#	4,716	4,288	3	4,073						
		%	100.0%	90.9%	.1%	86.4%						
	Unknown	#	75	65	1	56						
		%	100.0%	86.7%	1.3%	74.7%						
	Yes	#	1,798	1,468	1	1,374						
		%	100.0%	81.6%	.1%	76.4%						

Prepared by OISP, 19 Mar 03

a. These data are generated by a new procedure. A better method for tracking changes and corrections of Social Security Number has resulted in generally higher retention and graduation rates than those TAMU reported to the LBB as Key Performance Measures. The Key Measures may be found on OISP website under Reports/Miscellaneous/LBB Performance Measures - Annual.

b. Full-Time students are registered for 12 or more credit hours in their first semester at TAMU.

c. Top 10% and First Generation data are not available in OISP data warehouse before Fall 1999.

First-Time In College Full-Time (FTFT) Student Headcount Retention/Graduation Rates^{a,b}

Cohort Year 1999

Demographic Summary Headcount			Cohort Total	First Year	Second Year	Third Year	Fourth Year	Fifth Year	Sixth Year			
			#	Retention	Graduation	Retention	Graduation	Retention	Graduation	Retention	Graduation	Retention
University Total	#		6,659	5,891	3	5,628	100	5,355				
	%		100.0%	88.5%	.0%	84.5%	1.5%	80.4%				
Gender	Female	#	3,419	3,070	1	2,951	71	2,805				
		%	100.0%	89.8%	.0%	86.3%	2.1%	82.0%				
	Male	#	3,240	2,821	2	2,677	29	2,550				
		%	100.0%	87.1%	.1%	82.6%	.9%	78.7%				
Ethnic Origin	White	#	5,529	4,908	1	4,716	82	4,513				
		%	100.0%	88.8%	.0%	85.3%	1.5%	81.6%				
	Black	#	180	150		141	2	126				
		%	100.0%	83.3%		78.3%	1.1%	70.0%				
	Hispanic	#	569	493		462	5	441				
		%	100.0%	86.6%		81.2%	.9%	77.5%				
	Asian	#	231	208	2	186	10	172				
		%	100.0%	90.0%	.9%	80.5%	4.3%	74.5%				
	American Indian	#	33	26		24		22				
		%	100.0%	78.8%		72.7%		66.7%				
	International	#	37	32		29		12				
		%	100.0%	86.5%		78.4%		32.4%				
	Unknown	#	80	74		70	1	69				
		%	100.0%	92.5%		87.5%	1.3%	86.3%				
Tuition Status	Resident Tuition	#	6,024	5,326	3	5,084	84	4,861				
		%	100.0%	88.4%	.0%	84.4%	1.4%	80.7%				
	Non-Resident	#	163	134		125	2	97				
		%	100.0%	82.2%		76.7%	1.2%	59.5%				
	Tuition Waiver	#	472	431		419	14	397				
		%	100.0%	91.3%		88.8%	3.0%	84.1%				
Residency Status	In-State	#	6,277	5,558	3	5,316	87	5,090				
		%	100.0%	88.5%	.0%	84.7%	1.4%	81.1%				
	Out-of-State	#	244	209		200	6	183				
		%	100.0%	85.7%		82.0%	2.5%	75.0%				
	Out-of-US	#	138	124		112	7	82				
		%	100.0%	89.9%		81.2%	5.1%	59.4%				
Top 10% Texas High School ^c	No	#	3,688	3,169	1	3,006	36	2,841				
		%	100.0%	85.9%	.0%	81.5%	1.0%	77.0%				
	Yes	#	2,971	2,722	2	2,622	64	2,514				
		%	100.0%	91.6%	.1%	88.3%	2.2%	84.6%				
First Generation ^c	No	#	3,748	3,346	3	3,213	59	3,068				
		%	100.0%	89.3%	.1%	85.7%	1.6%	81.9%				
	Unknown	#	247	205		188	2	162				
		%	100.0%	83.0%		76.1%	.8%	65.6%				
	Yes	#	2,664	2,340		2,227	39	2,125				
		%	100.0%	87.8%		83.6%	1.5%	79.8%				

Prepared by OISP, 19 Mar 03

a. These data are generated by a new procedure. A better method for tracking changes and corrections of Social Security Number has resulted in generally higher retention and graduation rates than those TAMU reported to the LBB as Key Performance Measures. The Key Measures may be found on OISP website under Reports/Miscellaneous/LBB Performance Measures - Annual.

b. Full-Time students are registered for 12 or more credit hours in their first semester at TAMU.

c. Top 10% and First Generation data are not available in OISP data warehouse before Fall 1999.

First-Time In College Full-Time (FTFT) Student Headcount Retention/Graduation Rates^{a,b}

Cohort Year 1998

Demographic Summary Headcount			Cohort Total	First Year	Second Year	Third Year	Fourth Year	Fifth Year	Sixth Year			
			#	Retention	Graduation	Retention	Graduation	Retention	Graduation	Retention	Graduation	Retention
University	#		7,322	6,425	3	6,068	82	5,836	2,350	3,408		
Total	%		100.0%	87.7%	.0%	82.9%	1.1%	79.7%	32.1%	46.5%		
Gender	Female	#	3,701	3,291	1	3,152	57	3,029	1,568	1,458		
		%	100.0%	88.9%	.0%	85.2%	1.5%	81.8%	42.4%	39.4%		
	Male	#	3,621	3,134	2	2,916	25	2,807	782	1,950		
		%	100.0%	86.6%	.1%	80.5%	.7%	77.5%	21.6%	53.9%		
Ethnic Origin	White	#	6,011	5,330	2	5,043	69	4,865	2,015	2,799		
		%	100.0%	88.7%	.0%	83.9%	1.1%	80.9%	33.5%	46.6%		
	Black	#	197	164		160		155	43	109		
		%	100.0%	83.2%		81.2%		78.7%	21.8%	55.3%		
	Hispanic	#	667	542	1	500	6	476	157	317		
		%	100.0%	81.3%	.1%	75.0%	.9%	71.4%	23.5%	47.5%		
	Asian	#	258	229		212	4	199	79	117		
		%	100.0%	88.8%		82.2%	1.6%	77.1%	30.6%	45.3%		
	American Indian	#	38	29		25		24	6	18		
		%	100.0%	76.3%		65.8%		63.2%	15.8%	47.4%		
	International	#	54	49		48	1	43	14	10		
		%	100.0%	90.7%		88.9%	1.9%	79.6%	25.9%	18.5%		
	Unknown	#	97	82		80	2	74	36	38		
		%	100.0%	84.5%		82.5%	2.1%	76.3%	37.1%	39.2%		
Tuition Status	Resident Tuition	#	6,668	5,841	3	5,518	73	5,310	2,119	3,137		
		%	100.0%	87.6%	.0%	82.8%	1.1%	79.6%	31.8%	47.0%		
	Non-Resident Tuition	#	207	177		163	2	151	51	79		
		%	100.0%	85.5%		78.7%	1.0%	72.9%	24.6%	38.2%		
	Waiver	#	447	407		387	7	375	180	192		
		%	100.0%	91.1%		86.6%	1.6%	83.9%	40.3%	43.0%		
Residency Status	In-State	#	6,911	6,062	3	5,729	78	5,515	2,225	3,239		
		%	100.0%	87.7%	.0%	82.9%	1.1%	79.8%	32.2%	46.9%		
	Out-of-State	#	344	300		280	1	270	108	153		
		%	100.0%	87.2%		81.4%	.3%	78.5%	31.4%	44.5%		
	Out-of-US	#	67	63		59	3	51	17	16		
		%	100.0%	94.0%		88.1%	4.5%	76.1%	25.4%	23.9%		
Top 10% Texas High School ^c	No	#										
		%										
	Yes	#										
		%										
First Generation ^c	No	#										
		%										
	Unknown	#										
		%										
	Yes	#										
		%										

Prepared by OISP, 19 Mar 03

- a. These data are generated by a new procedure. A better method for tracking changes and corrections of Social Security Number has resulted in generally higher retention and graduation rates than those TAMU reported to the LBB as Key Performance Measures. The Key Measures may be found on OISP website under Reports/Miscellaneous/LBB Performance Measures - Annual.
- b. Full-Time students are registered for 12 or more credit hours in their first semester at TAMU.
- c. Top 10% and First Generation data are not available in OISP data warehouse before Fall 1999.

First-Time In College Full-Time (FTFT) Student Headcount Retention/Graduation Rates^{a,b}

Cohort Year 1997

Demographic Summary Headcount			Cohort Total	First Year	Second Year	Third Year	Fourth Year	Fifth Year	Sixth Year			
			#	Retention	Graduation	Retention	Graduation	Retention	Graduation	Retention	Graduation	Retention
University Total	#	6,180	5,426	2	5,112	92	4,871	1,953	2,897	4,217	577	
	%	100.0%	87.8%	.0%	82.7%	1.5%	78.8%	31.6%	46.9%	68.2%	9.3%	
Gender	Female	#	3,161	2,818	1	2,673	64	2,560	1,334	1,227	2,383	183
	%	100.0%	89.1%	.0%	84.6%	2.0%	81.0%	42.2%	38.8%	75.4%	5.8%	
	Male	#	3,019	2,608	1	2,439	28	2,311	619	1,670	1,834	394
	%	100.0%	86.4%	.0%	80.8%	.9%	76.5%	20.5%	55.3%	60.7%	13.1%	
Ethnic Origin	White	#	5,104	4,499	2	4,264	75	4,075	1,660	2,409	3,588	443
	%	100.0%	88.1%	.0%	83.5%	1.5%	79.8%	32.5%	47.2%	70.3%	8.7%	
	Black	#	177	151		138		128	29	87	79	28
	%	100.0%	85.3%		78.0%		72.3%	16.4%	49.2%	44.6%	15.8%	
	Hispanic	#	604	513		470	4	453	161	279	367	68
	%	100.0%	84.9%		77.8%	.7%	75.0%	26.7%	46.2%	60.8%	11.3%	
	Asian	#	223	199		179	10	159	78	87	138	25
	%	100.0%	89.2%		80.3%	4.5%	71.3%	35.0%	39.0%	61.9%	11.2%	
	American Indian	#	29	25		24	1	24	8	16	16	8
	%	100.0%	86.2%		82.8%	3.4%	82.8%	27.6%	55.2%	55.2%	27.6%	
	International	#	43	39		37	2	32	17	19	29	5
	%	100.0%	90.7%		86.0%	4.7%	74.4%	39.5%	44.2%	67.4%	11.6%	
	Unknown	#										
	%											
Tuition Status	Resident	#	5,544	4,853	1	4,571	82	4,363	1,720	2,617	3,767	520
	Tuition	%	100.0%	87.5%	.0%	82.4%	1.5%	78.7%	31.0%	47.2%	67.9%	9.4%
	Non-Resident	#	188	161	1	146	2	135	53	81	112	19
	%	100.0%	85.6%	.5%	77.7%	1.1%	71.8%	28.2%	43.1%	59.6%	10.1%	
	Tuition Waiver	#	448	412		395	8	373	180	199	338	38
	%	100.0%	92.0%		88.2%	1.8%	83.3%	40.2%	44.4%	75.4%	8.5%	
Residency Status	In-State	#	5,758	5,055	2	4,768	88	4,548	1,816	2,712	3,938	538
	%	100.0%	87.8%	.0%	82.8%	1.5%	79.0%	31.5%	47.1%	68.4%	9.3%	
	Out-of-State	#	367	321		298	2	284	119	161	245	33
	%	100.0%	87.5%		81.2%	.5%	77.4%	32.4%	43.9%	66.8%	9.0%	
	Out-of-US	#	55	50		46	2	39	18	24	34	6
	%	100.0%	90.9%		83.6%	3.6%	70.9%	32.7%	43.6%	61.8%	10.9%	
Top 10% Texas High School ^c	No	#										
	%											
	Yes	#										
	%											
First Generation ^c	No	#										
	%											
	Unknown	#										
	%											
	Yes	#										
	%											

Prepared by OISP, 19 Mar 03

a. These data are generated by a new procedure. A better method for tracking changes and corrections of Social Security Number has resulted in generally higher retention and graduation rates than those TAMU reported to the LBB as Key Performance Measures. The Key Measures may be found on OISP website under Reports/Miscellaneous/LBB Performance Measures - Annual.

b. Full-Time students are registered for 12 or more credit hours in their first semester at TAMU.

c. Top 10% and First Generation data are not available in OISP data warehouse before Fall 1999.

First-Time In College Full-Time (FTFT) Student Headcount Retention/Graduation Rates^{a,b}

Cohort Year 1996

Demographic Summary Headcount			Cohort Total	First Year	Second Year	Third Year	Fourth Year	Fifth Year	Sixth Year					
			#	Retention	Graduation	Retention	Graduation	Retention	Graduation	Retention	Graduation	Retention		
University Total	#	6,326	5,555	5	5,204	85	4,977	1,931	3,021	4,283	581	4,738	151	
	%	100.0%	87.8%	.1%	82.3%	1.3%	78.7%	30.5%	47.8%	67.7%	9.2%	74.9%	2.4%	
Gender	Female	#	3,218	2,834	4	2,693	61	2,575	1,306	1,279	2,395	175	2,537	42
		%	100.0%	88.1%	.1%	83.7%	1.9%	80.0%	40.6%	39.7%	74.4%	5.4%	78.8%	1.3%
	Male	#	3,108	2,721	1	2,511	24	2,402	625	1,742	1,888	406	2,201	109
		%	100.0%	87.5%	.0%	80.8%	.8%	77.3%	20.1%	56.0%	60.7%	13.1%	70.8%	3.5%
Ethnic Origin	White	#	5,154	4,581	3	4,323	73	4,156	1,653	2,486	3,624	452	3,981	110
		%	100.0%	88.9%	.1%	83.9%	1.4%	80.6%	32.1%	48.2%	70.3%	8.8%	77.2%	2.1%
	Black	#	230	197		175	1	167	47	120	130	32	147	14
		%	100.0%	85.7%		76.1%	.4%	72.6%	20.4%	52.2%	56.5%	13.9%	63.9%	6.1%
	Hispanic	#	707	569		520	7	481	155	316	378	74	441	19
		%	100.0%	80.5%		73.6%	1.0%	68.0%	21.9%	44.7%	53.5%	10.5%	62.4%	2.7%
	Asian	#	176	154	2	138	3	128	50	79	112	14	124	5
		%	100.0%	87.5%	1.1%	78.4%	1.7%	72.7%	28.4%	44.9%	63.6%	8.0%	70.5%	2.8%
	American Indian	#	24	22		20		18	10	8	15	5	17	3
		%	100.0%	91.7%		83.3%		75.0%	41.7%	33.3%	62.5%	20.8%	70.8%	12.5%
	International	#	35	32		28	1	27	16	12	24	4	28	
		%	100.0%	91.4%		80.0%	2.9%	77.1%	45.7%	34.3%	68.6%	11.4%	80.0%	
	Unknown	#												
		%												
Tuition Status	Resident Tuition	#	5,665	4,971	5	4,661	71	4,456	1,671	2,756	3,799	546	4,235	136
		%	100.0%	87.7%	.1%	82.3%	1.3%	78.7%	29.5%	48.6%	67.1%	9.6%	74.8%	2.4%
	Non-Resident Tuition	#	216	188		164	2	158	65	90	137	14	147	4
		%	100.0%	87.0%		75.9%	.9%	73.1%	30.1%	41.7%	63.4%	6.5%	68.1%	1.9%
Residency Status	Waiver	#	445	396		379	12	363	195	175	347	21	356	11
		%	100.0%	89.0%		85.2%	2.7%	81.6%	43.8%	39.3%	78.0%	4.7%	80.0%	2.5%
	In-State	#	5,904	5,188	5	4,873	80	4,660	1,792	2,842	3,996	555	4,438	141
		%	100.0%	87.9%	.1%	82.5%	1.4%	78.9%	30.4%	48.1%	67.7%	9.4%	75.2%	2.4%
Out-of-State		#	378	327		296	4	283	122	161	256	21	265	9
		%	100.0%	86.5%		78.3%	1.1%	74.9%	32.3%	42.6%	67.7%	5.6%	70.1%	2.4%
	Out-of-US	#	44	40		35	1	34	17	18	31	5	35	1
	%	100.0%	90.9%		79.5%	2.3%	77.3%	38.6%	40.9%	70.5%	11.4%	79.5%	2.3%	
Top 10% Texas High School ^c	No	#												
		%												
First Generation ^c	Yes	#												
		%												
	No	#												
		%												
Unknown	#													
	%													
Yes	#													
	%													

Prepared by OISP, 19 Mar 03

a. These data are generated by a new procedure. A better method for tracking changes and corrections of Social Security Number has resulted in generally higher retention and graduation rates than those TAMU reported to the LBB as Key Performance Measures. The Key Measures may be found on OISP website under Reports/Miscellaneous/LBB Performance Measures - Annual.

b. Full-Time students are registered for 12 or more credit hours in their first semester at TAMU.

c. Top 10% and First Generation data are not available in OISP data warehouse before Fall 1999.

First-Time In College (FTIC) Student Headcount Retention/Graduation Rates^{a,b}

Cohort Year 2002

Demographic Summary		Cohort Total	First Year	Second Year	Third Year	Fourth Year	Fifth Year	Sixth Year
		#	Retention	Graduation	Retention	Graduation	Retention	Graduation
University	#	6,949						
Total	%	100.0%						
Gender	Female	3,665						
	%	100.0%						
	Male	3,284						
	%	100.0%						
Ethnic Origin	White	5,758						
	%	100.0%						
	Black	182						
	%	100.0%						
	Hispanic	664						
	%	100.0%						
	Asian	230						
	%	100.0%						
	American Indian	27						
	%	100.0%						
International	Unknown	56						
	%	100.0%						
	Unknown	32						
	%	100.0%						
Tuition Status	Resident	6,581						
	%	100.0%						
	Non-Resident	181						
	%	100.0%						
Residency Status	Tuition Waiver	187						
	%	100.0%						
	In-State	6,606						
	%	100.0%						
	Out-of-State	281						
	%	100.0%						
	Out-of-US	62						
	%	100.0%						
Ft/Pt Status	Part-Time	360						
	%	100.0%						
	Full-Time	6,589						
	%	100.0%						
Top 10% Texas High School	No	3,581						
	%	100.0%						
	Yes	3,368						
	%	100.0%						
First Generation ^c	No	5,027						
	%	100.0%						
	Unknown	149						
	%	100.0%						
	Yes	1,773						
	%	100.0%						

Prepared by OISP, 19 Mar 03

a. These data are generated by a new procedure. A better method for tracking changes and corrections of Social Security Number has resulted in generally higher retention and graduation rates than those TAMU reported to the LBB as Key Performance Measures. The Key Measures may be found on OISP website under Reports/Miscellaneous/LBB Performance Measures - Annual.

b. Total headcount includes Full-Time and Part-Time FTIC students.

c. Top 10% and First Generation data are not available in OISP data warehouse before Fall 1999.

First-Time In College (FTIC) Student Headcount Retention/Graduation Rates^{a,b}

Cohort Year 2001

Demographic Summary		Cohort Total	First Year	Second Year	Third Year	Fourth Year	Fifth Year	Sixth Year
		#	Retention	Graduation	Retention	Graduation	Retention	Graduation
University	#	6,645	5,924					
Total	%	100.0%	89.1%					
Gender	Female	3,428	3,078					
	%	100.0%	89.8%					
	Male	3,217	2,846					
	%	100.0%	88.5%					
Ethnic Origin	White	5,487	4,937					
	%	100.0%	90.0%					
	Black	195	171					
	%	100.0%	87.7%					
	Hispanic	667	562					
	%	100.0%	84.3%					
	Asian	217	188					
	%	100.0%	86.6%					
	American Indian	37	28					
	%	100.0%	75.7%					
International	International	5	5					
	%	100.0%	100.0%					
	Unknown	37	33					
	%	100.0%	89.2%					
Tuition Status	Resident	6,337	5,659					
	%	100.0%	89.3%					
	Non-Resident	160	138					
	%	100.0%	86.3%					
Residency Status	Tuition Waiver	148	127					
	%	100.0%	85.8%					
	In-State	6,374	5,689					
	%	100.0%	89.3%					
	Out-of-State	262	227					
	%	100.0%	86.6%					
	Out-of-US	9	8					
Ft/Pt Status	%	100.0%	88.9%					
	Part-Time	376	309					
	%	100.0%	82.2%					
	Full-Time	6,269	5,615					
	%	100.0%	89.6%					
	Top 10% Texas High School	No	3,261	2,826				
%		100.0%	86.7%					
First Generation ^c	Yes	3,384	3,098					
	%	100.0%	91.5%					
	No	4,759	4,343					
	%	100.0%	91.3%					
	Unknown	87	73					
	%	100.0%	83.9%					
	Yes	1,799	1,508					
	%	100.0%	83.8%					

Prepared by OISP, 19 Mar 03

a. These data are generated by a new procedure. A better method for tracking changes and corrections of Social Security Number has resulted in generally higher retention and graduation rates than those TAMU reported to the LBB as Key Performance Measures. The Key Measures may be found on OISP website under Reports/Miscellaneous/LBB Performance Measures - Annual.

b. Total headcount includes Full-Time and Part-Time FTIC students.

c. Top 10% and First Generation data are not available in OISP data warehouse before Fall 1999.

First-Time In College (FTIC) Student Headcount Retention/Graduation Rates^{a,b}

Cohort Year 2000

Demographic Summary		Cohort Total	First Year	Second Year	Third Year	Fourth Year	Fifth Year	Sixth Year
		#	Retention	Graduation	Retention	Graduation	Retention	Graduation
University Total	#	6,618	5,848	5	5,525			
	%	100.0%	88.4%	.1%	83.5%			
Gender	Female	3,464	3,089	4	2,918			
	%	100.0%	89.2%	.1%	84.2%			
	Male	3,154	2,759	1	2,607			
	%	100.0%	87.5%	.0%	82.7%			
Ethnic Origin	White	5,367	4,793	1	4,564			
	%	100.0%	89.3%	.0%	85.0%			
	Black	170	140		125			
	%	100.0%	82.4%		73.5%			
	Hispanic	665	539	2	494			
	%	100.0%	81.1%	.3%	74.3%			
	Asian	250	229	1	213			
	%	100.0%	91.6%	.4%	85.2%			
	American Indian	35	30		30			
	%	100.0%	85.7%		85.7%			
	International	10	10		9			
	%	100.0%	100.0%		90.0%			
	Unknown	121	107	1	90			
	%	100.0%	88.4%	.8%	74.4%			
Tuition Status	Resident	6,302	5,577	5	5,265			
	%	100.0%	88.5%	.1%	83.5%			
	Non-Resident	119	98		92			
	%	100.0%	82.4%		77.3%			
	Tuition Waiver	197	173		168			
	%	100.0%	87.8%		85.3%			
Residency Status	In-State	6,302	5,577	5	5,265			
	%	100.0%	88.5%	.1%	83.5%			
	Out-of-State	305	260		251			
	%	100.0%	85.2%		82.3%			
	Out-of-US	11	11		9			
	%	100.0%	100.0%		81.8%			
Ft/Pt Status	Part-Time	29	27		22			
	%	100.0%	93.1%		75.9%			
	Full-Time	6,589	5,821	5	5,503			
	%	100.0%	88.3%	.1%	83.5%			
Top 10% Texas High School	No	3,391	2,874	3	2,682			
	%	100.0%	84.8%	.1%	79.1%			
	Yes	3,227	2,974	2	2,843			
	%	100.0%	92.2%	.1%	88.1%			
First Generation ^c	No	4,733	4,304	3	4,088			
	%	100.0%	90.9%	.1%	86.4%			
	Unknown	78	68	1	57			
	%	100.0%	87.2%	1.3%	73.1%			
	Yes	1,807	1,476	1	1,380			
	%	100.0%	81.7%	.1%	76.4%			

Prepared by OISP, 19 Mar 03

a. These data are generated by a new procedure. A better method for tracking changes and corrections of Social Security Number has resulted in generally higher retention and graduation rates than those TAMU reported to the LBB as Key Performance Measures. The Key Measures may be found on OISP website under Reports/Miscellaneous/LBB Performance Measures - Annual.

b. Total headcount includes Full-Time and Part-Time FTIC students.

c. Top 10% and First Generation data are not available in OISP data warehouse before Fall 1999.

First-Time In College (FTIC) Student Headcount Retention/Graduation Rates^{a,b}

Cohort Year 1999

Demographic Summary		Cohort Total	First Year	Second Year	Third Year	Fourth Year	Fifth Year	Sixth Year
		#	Retention	Graduation	Retention	Graduation	Retention	Graduation
University Total	#	6,692	5,914	3	5,650	102	5,370	
	%	100.0%	88.4%	.0%	84.4%	1.5%	80.2%	
Gender	Female	#	3,435	3,081	1	2,962	73	2,814
	%	100.0%	89.7%	.0%	86.2%	2.1%	81.9%	
	Male	#	3,257	2,833	2	2,688	29	2,556
	%	100.0%	87.0%	.1%	82.5%	.9%	78.5%	
Ethnic Origin	White	#	5,549	4,920	1	4,728	83	4,524
	%	100.0%	88.7%	.0%	85.2%	1.5%	81.5%	
	Black	#	180	150		141	2	126
	%	100.0%	83.3%		78.3%	1.1%	70.0%	
	Hispanic	#	570	494		463	6	441
	%	100.0%	86.7%		81.2%	1.1%	77.4%	
	Asian	#	231	208	2	186	10	172
	%	100.0%	90.0%	.9%	80.5%	4.3%	74.5%	
	American Indian	#	33	26		24		22
	%	100.0%	78.8%		72.7%		66.7%	
International	International	#	46	39		36		14
	%	100.0%	84.8%		78.3%		30.4%	
	Unknown	#	83	77		72	1	71
	%	100.0%	92.8%		86.7%	1.2%	85.5%	
Tuition Status	Resident	#	6,047	5,341	3	5,099	86	4,874
	%	100.0%	88.3%	.0%	84.3%	1.4%	80.6%	
	Non-Resident	#	173	142		132	2	99
	%	100.0%	82.1%		76.3%	1.2%	57.2%	
Residency Status	Tuition Waiver	#	472	431		419	14	397
	%	100.0%	91.3%		88.8%	3.0%	84.1%	
	In-State	#	6,299	5,572	3	5,330	89	5,102
	%	100.0%	88.5%	.0%	84.6%	1.4%	81.0%	
Out-of-State	Out-of-State	#	245	210		200	6	183
	%	100.0%	85.7%		81.6%	2.4%	74.7%	
	Out-of-US	#	148	132		120	7	85
	%	100.0%	89.2%		81.1%	4.7%	57.4%	
Ft/Pt Status	Part-Time	#	33	23		22	2	15
	%	100.0%	69.7%		66.7%	6.1%	45.5%	
	Full-Time	#	6,659	5,891	3	5,628	100	5,355
	%	100.0%	88.5%	.0%	84.5%	1.5%	80.4%	
Top 10% Texas High School	No	#	3,711	3,186	1	3,021	37	2,850
	%	100.0%	85.9%	.0%	81.4%	1.0%	76.8%	
	Yes	#	2,981	2,728	2	2,629	65	2,520
	%	100.0%	91.5%	.1%	88.2%	2.2%	84.5%	
First Generation ^c	No	#	3,761	3,355	3	3,220	61	3,073
	%	100.0%	89.2%	.1%	85.6%	1.6%	81.7%	
	Unknown	#	257	213		196	2	165
	%	100.0%	82.9%		76.3%	.8%	64.2%	
	Yes	#	2,674	2,346		2,234	39	2,132
	%	100.0%	87.7%		83.5%	1.5%	79.7%	

Prepared by OISP, 19 Mar 03

a. These data are generated by a new procedure. A better method for tracking changes and corrections of Social Security Number has resulted in generally higher retention and graduation rates than those TAMU reported to the LBB as Key Performance Measures. The Key Measures may be found on OISP website under Reports/Miscellaneous/LBB Performance Measures - Annual.

b. Total headcount includes Full-Time and Part-Time FTIC students.

c. Top 10% and First Generation data are not available in OISP data warehouse before Fall 1999.

First-Time In College (FTIC) Student Headcount Retention/Graduation Rates^{a,b}

Cohort Year 1998

Demographic Summary			Cohort Total	First Year	Second Year	Third Year	Fourth Year	Fifth Year	Sixth Year				
			#	Retention	Graduation	Retention	Graduation	Retention	Graduation	Retention	Graduation	Retention	Graduation
University	#	7,354	6,455	3	6,094	83	5,859	2,355	3,422				
Total	%	100.0%	87.8%	.0%	82.9%	1.1%	79.7%	32.0%	46.5%				
Gender	Female	#	3,713	3,302	1	3,162	57	3,039	1,570	1,464			
	%	100.0%	88.9%	.0%	85.2%	1.5%	81.8%	42.3%	39.4%				
	Male	#	3,641	3,153	2	2,932	26	2,820	785	1,958			
	%	100.0%	86.6%	.1%	80.5%	.7%	77.5%	21.6%	53.8%				
Ethnic Origin	White	#	6,033	5,350	2	5,061	69	4,882	2,019	2,811			
	%	100.0%	88.7%	.0%	83.9%	1.1%	80.9%	33.5%	46.6%				
	Black	#	197	164		160		155	43	109			
	%	100.0%	83.2%		81.2%		78.7%	21.8%	55.3%				
	Hispanic	#	669	544	1	502	6	477	157	318			
	%	100.0%	81.3%	.1%	75.0%	.9%	71.3%	23.5%	47.5%				
	Asian	#	259	230		213	5	199	80	117			
	%	100.0%	88.8%		82.2%	1.9%	76.8%	30.9%	45.2%				
	American Indian	#	38	29		25		24	6	18			
	%	100.0%	76.3%		65.8%		63.2%	15.8%	47.4%				
	International	#	60	55		52	1	47	14	10			
	%	100.0%	91.7%		86.7%	1.7%	78.3%	23.3%	16.7%				
Unknown	#	98	83		81	2	75	36	39				
	%	100.0%	84.7%		82.7%	2.0%	76.5%	36.7%	39.8%				
	Tuition Status	Resident	#	6,692	5,863	3	5,538	74	5,327	2,124	3,149		
	%	100.0%	87.6%	.0%	82.8%	1.1%	79.6%	31.7%	47.1%				
Non-Resident	#	215	185		169	2	157	51	81				
	%	100.0%	86.0%		78.6%	.9%	73.0%	23.7%	37.7%				
	Tuition	#	447	407		387	7	375	180	192			
	%	100.0%	91.1%		86.6%	1.6%	83.9%	40.3%	43.0%				
Residency Status	In-State	#	6,937	6,086	3	5,750	79	5,533	2,230	3,252			
	%	100.0%	87.7%	.0%	82.9%	1.1%	79.8%	32.1%	46.9%				
	Out-of-State	#	345	301		281	1	271	108	154			
	%	100.0%	87.2%		81.4%	.3%	78.6%	31.3%	44.6%				
Out-of-US	#	72	68		63	3	55	17	16				
	%	100.0%	94.4%		87.5%	4.2%	76.4%	23.6%	22.2%				
Ft/Pt Status	Part-Time	#	32	30		26	1	23	5	14			
	%	100.0%	93.8%		81.3%	3.1%	71.9%	15.6%	43.8%				
Full-Time	#	7,322	6,425	3	6,068	82	5,836	2,350	3,408				
	%	100.0%	87.7%	.0%	82.9%	1.1%	79.7%	32.1%	46.5%				
Top 10% Texas High School	No	#											
	%												
First Generation ^c	Yes	#											
	%												
	Unknown	#											
	%												
Yes	#												
	%												

Prepared by OISP, 19 Mar 03

a. These data are generated by a new procedure. A better method for tracking changes and corrections of Social Security Number has resulted in generally higher retention and graduation rates than those TAMU reported to the LBB as Key Performance Measures. The Key Measures may be found on OISP website under Reports/Miscellaneous/LBB Performance Measures - Annual.

b. Total headcount includes Full-Time and Part-Time FTIC students.

c. Top 10% and First Generation data are not available in OISP data warehouse before Fall 1999.

First-Time In College (FTIC) Student Headcount Retention/Graduation Rates^{a,b}

Cohort Year 1997

Demographic Summary			Cohort Total	First Year	Second Year	Third Year	Fourth Year	Fifth Year	Sixth Year				
			#	Retention	Graduation	Retention	Graduation	Retention	Graduation	Retention	Graduation	Retention	Graduation
University	#	6,217	5,454	2	5,138	92	4,898	1,963	2,914	4,237	584		
Total	%	100.0%	87.7%	.0%	82.6%	1.5%	78.8%	31.6%	46.9%	68.2%	9.4%		
Gender	Female	#	3,183	2,833	1	2,688	64	2,576	1,341	1,236	2,394	188	
	%	100.0%	89.0%	.0%	84.4%	2.0%	80.9%	42.1%	38.8%	75.2%	5.9%		
	Male	#	3,034	2,621	1	2,450	28	2,322	622	1,678	1,843	396	
	%	100.0%	86.4%	.0%	80.8%	.9%	76.5%	20.5%	55.3%	60.7%	13.1%		
Ethnic Origin	White	#	5,133	4,521	2	4,284	75	4,096	1,667	2,423	3,602	450	
	%	100.0%	88.1%	.0%	83.5%	1.5%	79.8%	32.5%	47.2%	70.2%	8.8%		
	Black	#	177	151		138		128	29	87	79	28	
	%	100.0%	85.3%		78.0%		72.3%	16.4%	49.2%	44.6%	15.8%		
	Hispanic	#	605	513		470	4	453	161	279	367	68	
	%	100.0%	84.8%		77.7%	.7%	74.9%	26.6%	46.1%	60.7%	11.2%		
	Asian	#	223	199		179	10	159	78	87	138	25	
	%	100.0%	89.2%		80.3%	4.5%	71.3%	35.0%	39.0%	61.9%	11.2%		
	American Indian	#	29	25		24	1	24	8	16	16	8	
	%	100.0%	86.2%		82.8%	3.4%	82.8%	27.6%	55.2%	55.2%	27.6%		
	International	#	50	45		43	2	38	20	22	35	5	
	%	100.0%	90.0%		86.0%	4.0%	76.0%	40.0%	44.0%	70.0%	10.0%		
	Unknown	#											
	%												
Tuition Status	Resident	#	5,571	4,872	1	4,588	82	4,381	1,727	2,628	3,780	525	
	%	100.0%	87.5%	.0%	82.4%	1.5%	78.6%	31.0%	47.2%	67.9%	9.4%		
	Non-Resident	#	198	170	1	155	2	144	56	87	119	21	
	%	100.0%	85.9%	.5%	78.3%	1.0%	72.7%	28.3%	43.9%	60.1%	10.6%		
	Tuition Waiver	#	448	412		395	8	373	180	199	338	38	
	%	100.0%	92.0%		88.2%	1.8%	83.3%	40.2%	44.4%	75.4%	8.5%		
Residency Status	In-State	#	5,785	5,074	2	4,785	88	4,566	1,823	2,723	3,951	543	
	%	100.0%	87.7%	.0%	82.7%	1.5%	78.9%	31.5%	47.1%	68.3%	9.4%		
	Out-of-State	#	370	324		301	2	287	119	164	246	35	
	%	100.0%	87.6%		81.4%	.5%	77.6%	32.2%	44.3%	66.5%	9.5%		
	Out-of-US	#	62	56		52	2	45	21	27	40	6	
	%	100.0%	90.3%		83.9%	3.2%	72.6%	33.9%	43.5%	64.5%	9.7%		
Ft/Pt Status	Part-Time	#	37	28		26		27	10	17	20	7	
	%	100.0%	75.7%		70.3%		73.0%	27.0%	45.9%	54.1%	18.9%		
	Full-Time	#	6,180	5,426	2	5,112	92	4,871	1,953	2,897	4,217	577	
	%	100.0%	87.8%	.0%	82.7%	1.5%	78.8%	31.6%	46.9%	68.2%	9.3%		
Top 10% Texas High School	No	#											
	%												
	Yes	#											
	%												
First Generation ^c	No	#											
	%												
	Unknown	#											
	%												
	Yes	#											
	%												

Prepared by OISP, 19 Mar 03

a. These data are generated by a new procedure. A better method for tracking changes and corrections of Social Security Number has resulted in generally higher retention and graduation rates than those TAMU reported to the LBB as Key Performance Measures. The Key Measures may be found on OISP website under Reports/Miscellaneous/LBB Performance Measures - Annual.

b. Total headcount includes Full-Time and Part-Time FTIC students.

c. Top 10% and First Generation data are not available in OISP data warehouse before Fall 1999.

First-Time In College (FTIC) Student Headcount Retention/Graduation Rates^{a,b}

Cohort Year 1996

Demographic Summary		Cohort Total	First Year	Second Year	Third Year	Fourth Year	Fifth Year	Sixth Year						
		#	Retention	Graduation	Retention	Graduation	Retention	Graduation	Retention	Graduation	Retention			
University	#	6,356	5,580	5	5,227	85	4,997	1,937	3,036	4,298	587	4,755	153	
Total	%	100.0%	87.8%	.1%	82.2%	1.3%	78.6%	30.5%	47.8%	67.6%	9.2%	74.8%	2.4%	
Gender	Female	#	3,227	2,843	4	2,701	61	2,581	1,309	1,282	2,400	176	2,542	43
	%	100.0%	88.1%	.1%	83.7%	1.9%	80.0%	40.6%	39.7%	74.4%	5.5%	78.8%	1.3%	
	Male	#	3,129	2,737	1	2,526	24	2,416	628	1,754	1,898	411	2,213	110
	%	100.0%	87.5%	.0%	80.7%	.8%	77.2%	20.1%	56.1%	60.7%	13.1%	70.7%	3.5%	
Ethnic Origin	White	#	5,175	4,599	3	4,340	73	4,170	1,656	2,497	3,633	457	3,992	112
	%	100.0%	88.9%	.1%	83.9%	1.4%	80.6%	32.0%	48.3%	70.2%	8.8%	77.1%	2.2%	
	Black	#	230	197		175	1	167	47	120	130	32	147	14
	%	100.0%	85.7%		76.1%	.4%	72.6%	20.4%	52.2%	56.5%	13.9%	63.9%	6.1%	
	Hispanic	#	711	571		521	7	482	155	318	379	75	442	19
	%	100.0%	80.3%		73.3%	1.0%	67.8%	21.8%	44.7%	53.3%	10.5%	62.2%	2.7%	
	Asian	#	176	154	2	138	3	128	50	79	112	14	124	5
	%	100.0%	87.5%	1.1%	78.4%	1.7%	72.7%	28.4%	44.9%	63.6%	8.0%	70.5%	2.8%	
	American Indian	#	24	22		20		18	10	8	15	5	17	3
	%	100.0%	91.7%		83.3%		75.0%	41.7%	33.3%	62.5%	20.8%	70.8%	12.5%	
	International	#	40	37		33	1	32	19	14	29	4	33	
	%	100.0%	92.5%		82.5%	2.5%	80.0%	47.5%	35.0%	72.5%	10.0%	82.5%		
	Unknown	#												
	%													
Tuition Status	Resident	#	5,689	4,990	5	4,678	71	4,470	1,674	2,768	3,808	552	4,246	138
	%	100.0%	87.7%	.1%	82.2%	1.2%	78.6%	29.4%	48.7%	66.9%	9.7%	74.6%	2.4%	
	Non-Resident	#	221	193		169	2	163	68	92	142	14	152	4
	%	100.0%	87.3%		76.5%	.9%	73.8%	30.8%	41.6%	64.3%	6.3%	68.8%	1.8%	
	Tuition Waiver	#	446	397		380	12	364	195	176	348	21	357	11
	%	100.0%	89.0%		85.2%	2.7%	81.6%	43.7%	39.5%	78.0%	4.7%	80.0%	2.5%	
Residency Status	In-State	#	5,929	5,208	5	4,891	80	4,675	1,795	2,855	4,006	561	4,450	143
	%	100.0%	87.8%	.1%	82.5%	1.3%	78.8%	30.3%	48.2%	67.6%	9.5%	75.1%	2.4%	
	Out-of-State	#	378	327		296	4	283	122	161	256	21	265	9
	%	100.0%	86.5%		78.3%	1.1%	74.9%	32.3%	42.6%	67.7%	5.6%	70.1%	2.4%	
	Out-of-US	#	49	45		40	1	39	20	20	36	5	40	1
	%	100.0%	91.8%		81.6%	2.0%	79.6%	40.8%	40.8%	73.5%	10.2%	81.6%	2.0%	
Ft/Pt Status	Part-Time	#	30	25		23		20	6	15	15	6	17	2
	%	100.0%	83.3%		76.7%		66.7%	20.0%	50.0%	50.0%	20.0%	56.7%	6.7%	
	Full-Time	#	6,326	5,555	5	5,204	85	4,977	1,931	3,021	4,283	581	4,738	151
	%	100.0%	87.8%	.1%	82.3%	1.3%	78.7%	30.5%	47.8%	67.7%	9.2%	74.9%	2.4%	
Top 10% Texas High School	No	#												
	%													
	Yes	#												
	%													
First Generation ^c	No	#												
	%													
	Unknown	#												
	%													
	Yes	#												
	%													

Prepared by OISP, 19 Mar 03

a. These data are generated by a new procedure. A better method for tracking changes and corrections of Social Security Number has resulted in generally higher retention and graduation rates than those TAMU reported to the LBB as Key Performance Measures. The Key Measures may be found on OISP website under Reports/Miscellaneous/LBB Performance Measures - Annual.

b. Total headcount includes Full-Time and Part-Time FTIC students.

c. Top 10% and First Generation data are not available in OISP data warehouse before Fall 1999.

**Historical Comparison of Four-Year Graduation Rates^a
Fall 1994 through Fall 2002 Transfer Student Cohorts**

Fall 1994 through Fall 2002 Transfer Cohorts		Transfer Year - Graduation Year				
		1994 - 1998	1995 - 1999	1996 - 2000	1997 - 2001	1998 - 2002
		%	%	%	%	%
Cohort Total		64.4%	68.2%	71.3%	74.3%	67.4%
Gender	Female	65.6%	71.2%	72.6%	75.6%	69.7%
	Male	63.4%	65.6%	70.4%	73.4%	65.9%
Ethnic Origin	White	65.9%	69.3%	71.7%	73.9%	68.1%
	Black	33.3%	52.4%	64.3%	85.7%	38.6%
	Hispanic	61.0%	58.6%	72.0%	71.1%	61.7%
	Asian	41.5%	66.7%	60.5%	73.5%	59.6%
	American Indian	100.0%	100.0%	100.0%	85.7%	55.6%
	International ^b				75.9%	74.2%
	Unknown					59.4%
Tuition Status	Resident Tuition	64.9%	68.6%	71.7%	74.1%	66.2%
	Non-Resident	50.9%	56.3%	60.9%	78.1%	75.3%
	Tuition Waiver	65.5%	66.7%	76.2%	68.9%	71.3%
Residency Status	In-State	65.0%	68.6%	71.4%	74.0%	66.3%
	Out-of-State	53.5%	59.7%	69.8%	68.1%	72.4%
	Out-of-US	33.3%		100.0%	76.1%	73.7%

Prepared by OISP, 31 Mar 03

- a. These data are generated by a new procedure. A revised method of identifying the transfer cohorts and better tracking of Social Security Number changes and corrections has resulted in generally higher retention and graduation rates than those TAMU reported to the LBB as Key Performance Measures. The Key Measures may be found on OISP website under Reports/Miscellaneous/LBB Performance Measures - Annual.
- b. Due to a programming glitch, International Transfer students were not coded as Transfer Students in SIMS prior to Fall 1997.

**Historical Comparison of Four-Year Graduation/Retention Rates^a
Fall 1994 through Fall 2002 Transfer Student Cohorts**

Fall 1994 through Fall 2002 Transfer Cohorts		Cohort Total	First Year		Second Year		Third Year		Fourth Year		
			#	Graduation	Retention	Graduation	Retention	Graduation	Retention	Graduation	Retention
All Terms Average	#	16,388	42	12,542	1,542	8,797	5,082	3,377	5,969	677	
	%	100.0%	.3%	85.8%	12.1%	69.0%	46.9%	31.2%	68.8%	7.8%	
Transfer Year - Graduation Year	1994 -	#	1,576	3	1,323	116	1,135	647	532	1,015	154
	1998	%	100.0%	.2%	83.9%	7.4%	72.0%	41.1%	33.8%	64.4%	9.8%
	1995 -	#	1,490	1	1,276	136	1,074	652	505	1,016	130
	1999	%	100.0%	.1%	85.6%	9.1%	72.1%	43.8%	33.9%	68.2%	8.7%
	1996 -	#	1,204	2	1,006	118	851	598	339	859	75
	2000	%	100.0%	.2%	83.6%	9.8%	70.7%	49.7%	28.2%	71.3%	6.2%
	1997 -	#	1,551	7	1,343	284	1,000	867	399	1,152	99
	2001	%	100.0%	.5%	86.6%	18.3%	64.5%	55.9%	25.7%	74.3%	6.4%
	1998 -	#	2,857	8	2,404	416	1,836	1,343	866	1,927	219
	2002	%	100.0%	.3%	84.1%	14.6%	64.3%	47.0%	30.3%	67.4%	7.7%
	1999 -	#	2,162	9	1,853	261	1,498	975	736		
	2003	%	100.0%	.4%	85.7%	12.1%	69.3%	45.1%	34.0%		
2000 -	#	1,903	5	1,695	211	1,403					
2004	%	100.0%	.3%	89.1%	11.1%	73.7%					
2001 -	#	1,876	7	1,642							
2005	%	100.0%	.4%	87.5%							
2002 -	#	1,769									
2006	%	100.0%									

Prepared by OISP, 31 Mar 03

a. These data are generated by a new procedure. A revised method of identifying the transfer cohorts and better tracking of Social Security Number changes and corrections has resulted in generally higher retention and graduation rates than those TAMU reported to the LBB as Key Performance Measures. The Key Measures may be found on OISP website under Reports/Miscellaneous/LBB Performance Measures - Annual.

**Historical Comparison of Four-Year Graduation/Retention Rates
Summary by Gender
Fall 1994 through Fall 2002 Transfer Student Cohorts^a**

Rate (%)

Fall 1994 through Fall 2002 Transfer Cohorts			First Year		Second Year		Third Year		Fourth Year		
Gender		#	Graduation	Retention	Graduation	Retention	Graduation	Retention	Graduation	Retention	
Female	1994 - 1998	100.0%	.1%	82.7%	8.4%	70.1%	45.2%	28.9%	65.6%	7.9%	
	1995 - 1999	100.0%	.1%	85.4%	10.9%	71.0%	49.9%	29.0%	71.2%	7.3%	
	1996 - 2000	100.0%		81.0%	12.8%	64.7%	55.8%	20.1%	72.6%	3.6%	
	1997 - 2001	100.0%	.2%	86.4%	17.7%	65.2%	59.6%	22.3%	75.6%	5.0%	
	1998 - 2002	100.0%	.3%	82.8%	14.8%	62.8%	51.7%	24.8%	69.7%	5.2%	
	1999 - 2003	100.0%	.7%	85.6%	15.6%	66.4%	50.9%	29.3%			
	2000 - 2004	100.0%	.3%	88.7%	13.5%	71.4%					
	2001 - 2005	100.0%	.6%	88.2%							
	Male	1994 - 1998	100.0%	.2%	85.0%	6.4%	73.6%	37.5%	37.9%	63.4%	11.4%
		1995 - 1999	100.0%		85.8%	7.6%	73.0%	38.5%	38.1%	65.6%	10.0%
		1996 - 2000	100.0%	.3%	85.6%	7.4%	75.4%	44.8%	34.5%	70.4%	8.3%
		1997 - 2001	100.0%	.6%	86.7%	18.8%	64.0%	53.4%	28.0%	73.4%	7.3%
		1998 - 2002	100.0%	.3%	85.0%	14.4%	65.3%	43.8%	34.0%	65.9%	9.3%
		1999 - 2003	100.0%	.2%	85.8%	9.0%	71.8%	40.0%	38.2%		
2000 - 2004		100.0%	.2%	89.4%	8.9%	75.9%					
2001 - 2005	100.0%	.2%	86.9%								

Prepared by OISP, 31 Mar 03

a. These data are generated by a new procedure. A revised method of identifying the transfer cohorts and better tracking of Social Security Number changes and corrections has resulted in generally higher retention and graduation rates than those TAMU reported to the LBB as Key Performance Measures. The Key Measures may be found on OISP website under Reports/Miscellaneous/LBB Performance Measures - Annual.

**Historical Comparison of Four-Year Graduation/Retention Rates
Summary by Gender
Fall 1994 through Fall 2002 Transfer Student Cohorts^a**

Headcount

Fall 1994 through Fall 2002 Transfer Cohorts			#	First Year		Second Year		Third Year		Fourth Year	
				Graduation	Retention	Graduation	Retention	Graduation	Retention	Graduation	Retention
Gender	Female	1994 - 1998	723	1	598	61	507	327	209	474	57
		1995 - 1999	687	1	587	75	488	343	199	489	50
		1996 - 2000	532		431	68	344	297	107	386	19
		1997 - 2001	623	1	538	110	406	371	139	471	31
		1998 - 2002	1,153	3	955	171	724	596	286	804	60
		1999 - 2003	1,012	7	866	158	672	515	297		
		2000 - 2004	920	3	816	124	657				
		2001 - 2005	875	5	772						
	Male	1994 - 1998	853	2	725	55	628	320	323	541	97
		1995 - 1999	803		689	61	586	309	306	527	80
		1996 - 2000	672	2	575	50	507	301	232	473	56
		1997 - 2001	928	6	805	174	594	496	260	681	68
		1998 - 2002	1,704	5	1,449	245	1,112	747	580	1,123	159
		1999 - 2003	1,150	2	987	103	826	460	439		
		2000 - 2004	983	2	879	87	746				
2001 - 2005	1,001	2	870								

Prepared by OISP, 31 Mar 03

a. These data are generated by a new procedure. A revised method of identifying the transfer cohorts and better tracking of Social Security Number changes and corrections has resulted in generally higher retention and graduation rates than those TAMU reported to the LBB as Key Performance Measures. The Key Measures may be found on OISP website under Reports/Miscellaneous/LBB Performance Measures - Annual.

**Historical Comparison of Four-Year Graduation/Retention Rates
Summary by Ethnicity^a
Fall 1994 through Fall 2002 Transfer Student Cohorts^a**

Rate (%)

Fall 1994 through Fall 2002 Transfer Cohorts			First Year		Second Year		Third Year		Fourth Year		
Ethnic Origin		#	Graduation	Retention	Graduation	Retention	Graduation	Retention	Graduation	Retention	
White	1994 - 1998	100.0%	.2%	84.5%	7.7%	72.2%	42.6%	32.8%	65.9%	9.0%	
	1995 - 1999	100.0%	.1%	86.7%	9.4%	73.0%	45.6%	33.3%	69.3%	9.0%	
	1996 - 2000	100.0%	.2%	83.3%	10.0%	70.5%	51.5%	26.3%	71.7%	5.7%	
	1997 - 2001	100.0%	.1%	86.6%	10.9%	71.8%	52.9%	27.6%	73.9%	5.8%	
	1998 - 2002	100.0%	.2%	84.1%	10.5%	68.4%	45.7%	31.6%	68.1%	7.9%	
	1999 - 2003	100.0%	.5%	86.3%	12.4%	69.4%	46.6%	33.4%			
	2000 - 2004	100.0%	.3%	89.5%	11.3%	74.5%					
	2001 - 2005	100.0%	.3%	88.7%							
	Black	1994 - 1998	100.0%		71.4%		57.1%	19.0%	28.6%	33.3%	9.5%
		1995 - 1999	100.0%		85.7%	4.8%	52.4%	33.3%	23.8%	52.4%	
1996 - 2000		100.0%		85.7%	7.1%	57.1%	28.6%	35.7%	64.3%		
1997 - 2001		100.0%		92.9%	28.6%	64.3%	57.1%	35.7%	85.7%		
1998 - 2002		100.0%		68.2%	6.8%	52.3%	20.5%	31.8%	38.6%	11.4%	
1999 - 2003		100.0%		78.6%	3.6%	67.9%	21.4%	46.4%			
2000 - 2004		100.0%		80.0%	6.7%	73.3%					
2001 - 2005		100.0%		78.6%							
Hispanic	1994 - 1998	100.0%		80.0%	7.0%	75.0%	35.0%	43.0%	61.0%	18.0%	
	1995 - 1999	100.0%		76.6%	8.1%	65.8%	30.6%	38.7%	58.6%	9.0%	
	1996 - 2000	100.0%		87.8%	9.8%	73.2%	40.2%	40.2%	72.0%	9.8%	
	1997 - 2001	100.0%		90.0%	16.7%	64.4%	52.2%	28.9%	71.1%	10.0%	
	1998 - 2002	100.0%		77.0%	7.2%	63.6%	37.8%	34.0%	61.7%	9.1%	
	1999 - 2003	100.0%		81.6%	10.4%	67.5%	36.2%	41.1%			
	2000 - 2004	100.0%		87.3%	8.5%	73.9%					
	2001 - 2005	100.0%		82.4%							
Asian	1994 - 1998	100.0%		79.2%	3.8%	67.9%	18.9%	45.3%	41.5%	15.1%	
	1995 - 1999	100.0%		78.4%	5.9%	70.6%	27.5%	43.1%	66.7%	3.9%	
	1996 - 2000	100.0%		78.9%	5.3%	73.7%	26.3%	50.0%	60.5%	15.8%	
	1997 - 2001	100.0%	2.0%	77.6%	14.3%	61.2%	44.9%	30.6%	73.5%	2.0%	
	1998 - 2002	100.0%	1.1%	85.4%	12.4%	61.8%	39.3%	32.6%	59.6%	11.2%	
	1999 - 2003	100.0%		85.2%	1.9%	85.2%	25.9%	55.6%			
	2000 - 2004	100.0%		75.6%	7.3%	65.9%					
	2001 - 2005	100.0%	2.4%	83.3%							
American Indian	1994 - 1998	100.0%		100.0%		75.0%	75.0%	25.0%	100.0%		
	1995 - 1999	100.0%		100.0%		100.0%	100.0%		100.0%		
	1996 - 2000	100.0%		100.0%		100.0%	50.0%	50.0%	100.0%		
	1997 - 2001	100.0%		100.0%		85.7%	57.1%	42.9%	85.7%	14.3%	
	1998 - 2002	100.0%		88.9%	22.2%	61.1%	33.3%	44.4%	55.6%	22.2%	
	1999 - 2003	100.0%		90.0%	10.0%	60.0%	50.0%	10.0%			
	2000 - 2004	100.0%		87.5%	12.5%	50.0%					
	2001 - 2005	100.0%		85.7%							
International ^b	1997 - 2001	100.0%	1.6%	86.4%	44.6%	39.6%	68.7%	16.8%	75.9%	8.2%	
	1998 - 2002	100.0%	.5%	88.7%	41.1%	45.1%	64.4%	21.6%	74.2%	2.5%	
	1999 - 2003	100.0%		83.3%	22.2%	61.1%	51.9%	13.0%			
	2000 - 2004	100.0%		93.2%	18.2%	59.1%					
	2001 - 2005	100.0%		80.4%							
Unknown	1998 - 2002	100.0%		88.4%	8.7%	68.1%	43.5%	24.6%	59.4%	14.5%	
	1999 - 2003	100.0%		82.7%	9.6%	67.3%	44.2%	30.8%			
	2000 - 2004	100.0%		89.4%	10.6%	70.2%					
	2001 - 2005	100.0%	9.5%	76.2%							

Prepared by OISP, 31 Mar 03

a. These data are generated by a new procedure. A revised method of identifying the transfer cohorts and better tracking of Social Security Number changes and corrections has resulted in generally higher retention and graduation rates than those TAMU reported to the LBB as Key Performance Measures. The Key Measures may be found on OISP website under Reports/Miscellaneous/LBB Performance Measures - Annual.

b. Due to a programming glitch, International Transfer students were not coded as Transfer Students in SIMS prior to Fall 1997.

**Historical Comparison of Four-Year Graduation/Retention Rates
Summary by Ethnicity^a
Fall 1994 through Fall 2002 Transfer Student Cohorts^a**

Headcount

Fall 1994 through Fall 2002 Transfer Cohorts			First Year		Second Year		Third Year		Fourth Year			
		#	Graduation	Retention	Graduation	Retention	Graduation	Retention	Graduation	Retention		
Ethnic Origin	White	1994 - 1998	1,398	3	1,182	107	1,009	595	458	921	126	
		1995 - 1999	1,305	1	1,131	123	952	595	435	904	118	
		1996 - 2000	1,066	2	888	107	751	549	280	764	61	
		1997 - 2001	1,075	1	931	117	772	569	297	794	62	
		1998 - 2002	2,029	5	1,706	213	1,387	927	641	1,381	161	
		1999 - 2003	1,801	9	1,555	224	1,249	840	602			
		2000 - 2004	1,606	5	1,438	181	1,197					
		2001 - 2005	1,567	4	1,390							
		Black	1994 - 1998	21		15		12	4	6	7	2
			1995 - 1999	21		18	1	11	7	5	11	
1996 - 2000	14			12	1	8	4	5	9			
1997 - 2001	14			13	4	9	8	5	12			
1998 - 2002	44			30	3	23	9	14	17	5		
1999 - 2003	28			22	1	19	6	13				
2000 - 2004	15			12	1	11						
2001 - 2005	28			22								
Hispanic	1994 - 1998	100		80	7	75	35	43	61	18		
	1995 - 1999	111		85	9	73	34	43	65	10		
	1996 - 2000	82		72	8	60	33	33	59	8		
	1997 - 2001	90		81	15	58	47	26	64	9		
	1998 - 2002	209		161	15	133	79	71	129	19		
	1999 - 2003	163		133	17	110	59	67				
	2000 - 2004	142		124	12	105						
	2001 - 2005	148		122								
Asian	1994 - 1998	53		42	2	36	10	24	22	8		
	1995 - 1999	51		40	3	36	14	22	34	2		
	1996 - 2000	38		30	2	28	10	19	23	6		
	1997 - 2001	49	1	38	7	30	22	15	36	1		
	1998 - 2002	89	1	76	11	55	35	29	53	10		
	1999 - 2003	54		46	1	46	14	30				
	2000 - 2004	41		31	3	27						
	2001 - 2005	42	1	35								
American Indian	1994 - 1998	4		4		3	3	1	4			
	1995 - 1999	2		2		2	2		2			
	1996 - 2000	4		4		4	2	2	4			
	1997 - 2001	7		7		6	4	3	6	1		
	1998 - 2002	18		16	4	11	6	8	10	4		
	1999 - 2003	10		9	1	6	5	1				
	2000 - 2004	8		7	1	4						
	2001 - 2005	14		12								
International ^b	1997 - 2001	316	5	273	141	125	217	53	240	26		
	1998 - 2002	399	2	354	164	180	257	86	296	10		
	1999 - 2003	54		45	12	33	28	7				
	2000 - 2004	44		41	8	26						
	2001 - 2005	56		45								
Unknown	1998 - 2002	69		61	6	47	30	17	41	10		
	1999 - 2003	52		43	5	35	23	16				
	2000 - 2004	47		42	5	33						
	2001 - 2005	21	2	16								

Prepared by OISP, 31 Mar 03

a. These data are generated by a new procedure. A revised method of identifying the transfer cohorts and better tracking of Social Security Number changes and corrections has resulted in generally higher retention and graduation rates than those TAMU reported to the LBB as Key Performance Measures. The Key Measures may be found on OISP website under Reports/Miscellaneous/LBB Performance Measures - Annual.

b. Due to a programming glitch, International Transfer students were not coded as Transfer Students in SIMS prior to Fall 1997.

**Historical Comparison of Four-Year Graduation Rates^a
Fall 1994 through Fall 1998 Transfer Student Cohorts**

Fall 1994 through Fall 1998 Transfer Cohorts			Transfer Year - Graduation Year				
			1994 - 1998	1995 - 1999	1996 - 2000	1997 - 2001	1998 - 2002
			Graduation	Graduation	Graduation	Graduation	Graduation
Cohort	#	#	1,015	1,016	859	1,152	1,927
Total		%	64.4%	68.2%	71.3%	74.3%	67.4%
Gender	Female	#	474	489	386	471	804
		%	65.6%	71.2%	72.6%	75.6%	69.7%
	Male	#	541	527	473	681	1,123
		%	63.4%	65.6%	70.4%	73.4%	65.9%
Ethnic Origin	White	#	921	904	764	794	1,381
		%	65.9%	69.3%	71.7%	73.9%	68.1%
	Black	#	7	11	9	12	17
		%	33.3%	52.4%	64.3%	85.7%	38.6%
	Hispanic	#	61	65	59	64	129
		%	61.0%	58.6%	72.0%	71.1%	61.7%
	Asian	#	22	34	23	36	53
		%	41.5%	66.7%	60.5%	73.5%	59.6%
	American Indian	#	4	2	4	6	10
		%	100.0%	100.0%	100.0%	85.7%	55.6%
International ^b	#				240	296	
	%				75.9%	74.2%	
Unknown	#					41	
	%					59.4%	
Tuition Status	Resident	#	968	977	815	866	1,554
		%	64.9%	68.6%	71.7%	74.1%	66.2%
	Non-Resident	#	28	27	28	193	204
		%	50.9%	56.3%	60.9%	78.1%	75.3%
Tuition Waiver	#	19	12	16	93	169	
	%	65.5%	66.7%	76.2%	68.9%	71.3%	
Residency Status	In-State	#	976	979	821	881	1,598
		%	65.0%	68.6%	71.4%	74.0%	66.3%
	Out-of-State	#	38	37	37	32	55
		%	53.5%	59.7%	69.8%	68.1%	72.4%
	Out-of-US	#	1		1	239	274
		%	33.3%		100.0%	76.1%	73.7%

Prepared by OISP, 19 Mar 03

a. These data are generated by a new procedure. A revised method of identifying the transfer cohorts and better tracking of Social Security Number changes and corrections has resulted in generally higher retention and graduation rates than those TAMU reported to the LBB as Key Performance Measures. The Key Measures may be found on OISP website under Reports/Miscellaneous/LBB Performance Measures - Annual.

b. Due to a programming glitch, International Transfer students were not coded as Transfer Students in SIMS prior to Fall 1997.

Transfer Student Headcount Retention/Graduation Rates^a

Transfer Year - Graduation Year 2002 - 2006

Transfer Cohort			Cohort Total	First Year		Second Year		Third Year		Fourth Year	
			#	Graduation	Retention	Graduation	Retention	Graduation	Retention	Graduation	Retention
Cohort Total	#	#	1,769								
		%	100.0%								
Gender	Female	#	843								
		%	100.0%								
	Male	#	926								
		%	100.0%								
Ethnic Origin	White	#	1,466								
		%	100.0%								
	Black	#	23								
		%	100.0%								
	Hispanic	#	144								
		%	100.0%								
	Asian	#	34								
		%	100.0%								
	American Indian	#	9								
		%	100.0%								
International ^b	#	68									
	%	100.0%									
Unknown	#	25									
	%	100.0%									
Tuition Status	Resident	#	1,641								
		%	100.0%								
	Non-Resident	#	95								
		%	100.0%								
Residency Status	Tuition Waiver	#	33								
		%	100.0%								
	In-State	#	1,646								
		%	100.0%								
Out-of-State	#	53									
	%	100.0%									
Out-of-US	#	70									
	%	100.0%									

Prepared by OISP, 31 Mar 03

a. These data are generated by a new procedure. A revised method of identifying the transfer cohorts and better tracking of Social Security Number changes and corrections has resulted in generally higher retention and graduation rates than those TAMU reported to the LBB as Key Performance Measures. The Key Measures may be found on OISP website under Reports/Miscellaneous/LBB Performance Measures - Annual.

b. Due to a programming glitch, International Transfer students were not coded as Transfer Students in SIMS prior to Fall 1997.

Transfer Student Headcount Retention/Graduation Rates^a

Transfer Year - Graduation Year 2001 - 2005

Transfer Cohort			Cohort Total	First Year		Second Year		Third Year		Fourth Year	
			#	Graduation	Retention	Graduation	Retention	Graduation	Retention	Graduation	Retention
Cohort	#	#	1,876	7	1,642						
Total	%	%	100.0%	.4%	87.5%						
Gender	Female	#	875	5	772						
		%	100.0%	.6%	88.2%						
	Male	#	1,001	2	870						
		%	100.0%	.2%	86.9%						
Ethnic Origin	White	#	1,567	4	1,390						
		%	100.0%	.3%	88.7%						
	Black	#	28		22						
		%	100.0%		78.6%						
	Hispanic	#	148		122						
		%	100.0%		82.4%						
	Asian	#	42	1	35						
		%	100.0%	2.4%	83.3%						
	American Indian	#	14		12						
		%	100.0%		85.7%						
	International ^b	#	56		45						
		%	100.0%		80.4%						
Tuition Status	Unknown	#	21	2	16						
		%	100.0%	9.5%	76.2%						
	Resident	#	1,754	5	1,541						
		%	100.0%	.3%	87.9%						
	Non-Resident	#	88		72						
		%	100.0%		81.8%						
	Tuition Waiver	#	34	2	29						
		%	100.0%	5.9%	85.3%						
Residency Status	In-State	#	1,765	5	1,552						
		%	100.0%	.3%	87.9%						
	Out-of-State	#	55	2	45						
		%	100.0%	3.6%	81.8%						
	Out-of-US	#	56		45						
		%	100.0%		80.4%						

Prepared by OISP, 31 Mar 03

a. These data are generated by a new procedure. A revised method of identifying the transfer cohorts and better tracking of Social Security Number changes and corrections has resulted in generally higher retention and graduation rates than those TAMU reported to the LBB as Key Performance Measures. The Key Measures may be found on OISP website under Reports/Miscellaneous/LBB Performance Measures - Annual.

b. Due to a programming glitch, International Transfer students were not coded as Transfer Students in SIMS prior to Fall 1997.

Transfer Student Headcount Retention/Graduation Rates^a

Transfer Year - Graduation Year 2000 - 2004

Transfer Cohort			Cohort Total	First Year		Second Year		Third Year		Fourth Year	
			#	Graduation	Retention	Graduation	Retention	Graduation	Retention	Graduation	Retention
Cohort Total	#	#	1,903	5	1,695	211	1,403				
		%	100.0%	.3%	89.1%	11.1%	73.7%				
Gender	Female	#	920	3	816	124	657				
		%	100.0%	.3%	88.7%	13.5%	71.4%				
	Male	#	983	2	879	87	746				
		%	100.0%	.2%	89.4%	8.9%	75.9%				
Ethnic Origin	White	#	1,606	5	1,438	181	1,197				
		%	100.0%	.3%	89.5%	11.3%	74.5%				
	Black	#	15		12	1	11				
		%	100.0%		80.0%	6.7%	73.3%				
	Hispanic	#	142		124	12	105				
		%	100.0%		87.3%	8.5%	73.9%				
	Asian	#	41		31	3	27				
		%	100.0%		75.6%	7.3%	65.9%				
	American Indian	#	8		7	1	4				
		%	100.0%		87.5%	12.5%	50.0%				
	International ^b	#	44		41	8	26				
		%	100.0%		93.2%	18.2%	59.1%				
	Unknown	#	47		42	5	33				
		%	100.0%		89.4%	10.6%	70.2%				
Tuition Status	Resident	#	1,776	5	1,583	192	1,326				
		%	100.0%	.3%	89.1%	10.8%	74.7%				
	Non-Resident	#	89		76	11	55				
		%	100.0%		85.4%	12.4%	61.8%				
	Tuition Waiver	#	38		36	8	22				
		%	100.0%		94.7%	21.1%	57.9%				
Residency Status	In-State	#	1,776	5	1,583	192	1,326				
		%	100.0%	.3%	89.1%	10.8%	74.7%				
	Out-of-State	#	83		71	11	51				
		%	100.0%		85.5%	13.3%	61.4%				
	Out-of-US	#	44		41	8	26				
		%	100.0%		93.2%	18.2%	59.1%				

Prepared by OISP, 31 Mar 03

a. These data are generated by a new procedure. A revised method of identifying the transfer cohorts and better tracking of Social Security Number changes and corrections has resulted in generally higher retention and graduation rates than those TAMU reported to the LBB as Key Performance Measures. The Key Measures may be found on OISP website under Reports/Miscellaneous/LBB Performance Measures - Annual.

b. Due to a programming glitch, International Transfer students were not coded as Transfer Students in SIMS prior to Fall 1997.

Transfer Student Headcount Retention/Graduation Rates^a

Transfer Year - Graduation Year 1999 - 2003

Transfer Cohort			Cohort Total		First Year		Second Year		Third Year		Fourth Year	
			#	%	Graduation	Retention	Graduation	Retention	Graduation	Retention	Graduation	Retention
Cohort	#	#	2,162		9	1,853	261	1,498	975	736		
Total		%	100.0%		.4%	85.7%	12.1%	69.3%	45.1%	34.0%		
Gender	Female	#	1,012		7	866	158	672	515	297		
		%	100.0%		.7%	85.6%	15.6%	66.4%	50.9%	29.3%		
	Male	#	1,150		2	987	103	826	460	439		
		%	100.0%		.2%	85.8%	9.0%	71.8%	40.0%	38.2%		
Ethnic Origin	White	#	1,801		9	1,555	224	1,249	840	602		
		%	100.0%		.5%	86.3%	12.4%	69.4%	46.6%	33.4%		
	Black	#	28			22	1	19	6	13		
		%	100.0%			78.6%	3.6%	67.9%	21.4%	46.4%		
	Hispanic	#	163			133	17	110	59	67		
		%	100.0%			81.6%	10.4%	67.5%	36.2%	41.1%		
	Asian	#	54			46	1	46	14	30		
		%	100.0%			85.2%	1.9%	85.2%	25.9%	55.6%		
	American Indian	#	10			9	1	6	5	1		
		%	100.0%			90.0%	10.0%	60.0%	50.0%	10.0%		
International ^b	#	54			45	12	33	28	7			
	%	100.0%			83.3%	22.2%	61.1%	51.9%	13.0%			
Unknown	#	52			43	5	35	23	16			
	%	100.0%			82.7%	9.6%	67.3%	44.2%	30.8%			
Tuition Status	Resident	#	2,004		9	1,724	240	1,402	911	698		
		%	100.0%		.4%	86.0%	12.0%	70.0%	45.5%	34.8%		
	Non-Resident	#	111			91	14	67	44	25		
		%	100.0%			82.0%	12.6%	60.4%	39.6%	22.5%		
Tuition Waiver	#	47			38	7	29	20	13			
	%	100.0%			80.9%	14.9%	61.7%	42.6%	27.7%			
Residency Status	In-State	#	2,001		9	1,716	241	1,394	912	686		
		%	100.0%		.4%	85.8%	12.0%	69.7%	45.6%	34.3%		
	Out-of-State	#	66			54	3	41	17	27		
		%	100.0%			81.8%	4.5%	62.1%	25.8%	40.9%		
Out-of-US	#	95			83	17	63	46	23			
	%	100.0%			87.4%	17.9%	66.3%	48.4%	24.2%			

Prepared by OISP, 31 Mar 03

a. These data are generated by a new procedure. A revised method of identifying the transfer cohorts and better tracking of Social Security Number changes and corrections has resulted in generally higher retention and graduation rates than those TAMU reported to the LBB as Key Performance Measures. The Key Measures may be found on OISP website under Reports/Miscellaneous/LBB Performance Measures - Annual.

b. Due to a programming glitch, International Transfer students were not coded as Transfer Students in SIMS prior to Fall 1997.

Transfer Student Headcount Retention/Graduation Rates^a

Transfer Year - Graduation Year 1998 - 2002

Transfer Cohort			Cohort Total	First Year		Second Year		Third Year		Fourth Year	
			#	Graduation	Retention	Graduation	Retention	Graduation	Retention	Graduation	Retention
Cohort	#	#	2,857	8	2,404	416	1,836	1,343	866	1,927	219
Total	%	%	100.0%	.3%	84.1%	14.6%	64.3%	47.0%	30.3%	67.4%	7.7%
Gender	Female	#	1,153	3	955	171	724	596	286	804	60
		%	100.0%	.3%	82.8%	14.8%	62.8%	51.7%	24.8%	69.7%	5.2%
	Male	#	1,704	5	1,449	245	1,112	747	580	1,123	159
		%	100.0%	.3%	85.0%	14.4%	65.3%	43.8%	34.0%	65.9%	9.3%
Ethnic	White	#	2,029	5	1,706	213	1,387	927	641	1,381	161
		%	100.0%	.2%	84.1%	10.5%	68.4%	45.7%	31.6%	68.1%	7.9%
Origin	Black	#	44		30	3	23	9	14	17	5
		%	100.0%		68.2%	6.8%	52.3%	20.5%	31.8%	38.6%	11.4%
	Hispanic	#	209		161	15	133	79	71	129	19
		%	100.0%		77.0%	7.2%	63.6%	37.8%	34.0%	61.7%	9.1%
	Asian	#	89	1	76	11	55	35	29	53	10
		%	100.0%	1.1%	85.4%	12.4%	61.8%	39.3%	32.6%	59.6%	11.2%
	American	#	18		16	4	11	6	8	10	4
	Indian	%	100.0%		88.9%	22.2%	61.1%	33.3%	44.4%	55.6%	22.2%
	International ^b	#	399	2	354	164	180	257	86	296	10
		%	100.0%	.5%	88.7%	41.1%	45.1%	64.4%	21.6%	74.2%	2.5%
	Unknown	#	69		61	6	47	30	17	41	10
		%	100.0%		88.4%	8.7%	68.1%	43.5%	24.6%	59.4%	14.5%
Tuition	Resident	#	2,349	6	1,963	240	1,583	1,035	750	1,554	203
	Tuition	%	100.0%	.3%	83.6%	10.2%	67.4%	44.1%	31.9%	66.2%	8.6%
Status	Non-Resident	#	271	1	235	88	140	155	70	204	10
		%	100.0%	.4%	86.7%	32.5%	51.7%	57.2%	25.8%	75.3%	3.7%
	Tuition	#	237	1	206	88	113	153	46	169	6
	Waiver	%	100.0%	.4%	86.9%	37.1%	47.7%	64.6%	19.4%	71.3%	2.5%
Residency	In-State	#	2,409	6	2,012	254	1,618	1,066	767	1,598	208
		%	100.0%	.2%	83.5%	10.5%	67.2%	44.3%	31.8%	66.3%	8.6%
Status	Out-of-State	#	76		63	7	53	34	22	55	2
		%	100.0%		82.9%	9.2%	69.7%	44.7%	28.9%	72.4%	2.6%
	Out-of-US	#	372	2	329	155	165	243	77	274	9
		%	100.0%	.5%	88.4%	41.7%	44.4%	65.3%	20.7%	73.7%	2.4%

Prepared by OISP, 31 Mar 03

a. These data are generated by a new procedure. A revised method of identifying the transfer cohorts and better tracking of Social Security Number changes and corrections has resulted in generally higher retention and graduation rates than those TAMU reported to the LBB as Key Performance Measures. The Key Measures may be found on OISP website under Reports/Miscellaneous/LBB Performance Measures - Annual.

b. Due to a programming glitch, International Transfer students were not coded as Transfer Students in SIMS prior to Fall 1997.

Transfer Student Headcount Retention/Graduation Rates^a

Transfer Year - Graduation Year 1997 - 2001

Transfer Cohort			Cohort Total	First Year		Second Year		Third Year		Fourth Year	
			#	Graduation	Retention	Graduation	Retention	Graduation	Retention	Graduation	Retention
Cohort Total	#	#	1,551	7	1,343	284	1,000	867	399	1,152	99
		%	100.0%	.5%	86.6%	18.3%	64.5%	55.9%	25.7%	74.3%	6.4%
Gender	Female	#	623	1	538	110	406	371	139	471	31
		%	100.0%	.2%	86.4%	17.7%	65.2%	59.6%	22.3%	75.6%	5.0%
	Male	#	928	6	805	174	594	496	260	681	68
		%	100.0%	.6%	86.7%	18.8%	64.0%	53.4%	28.0%	73.4%	7.3%
Ethnic Origin	White	#	1,075	1	931	117	772	569	297	794	62
		%	100.0%	.1%	86.6%	10.9%	71.8%	52.9%	27.6%	73.9%	5.8%
	Black	#	14		13	4	9	8	5	12	
		%	100.0%		92.9%	28.6%	64.3%	57.1%	35.7%	85.7%	
	Hispanic	#	90		81	15	58	47	26	64	9
		%	100.0%		90.0%	16.7%	64.4%	52.2%	28.9%	71.1%	10.0%
	Asian	#	49	1	38	7	30	22	15	36	1
		%	100.0%	2.0%	77.6%	14.3%	61.2%	44.9%	30.6%	73.5%	2.0%
	American Indian	#	7		7		6	4	3	6	1
		%	100.0%		100.0%		85.7%	57.1%	42.9%	85.7%	14.3%
International ^b		#	316	5	273	141	125	217	53	240	26
		%	100.0%	1.6%	86.4%	44.6%	39.6%	68.7%	16.8%	75.9%	8.2%
Unknown		#									
		%									
Tuition Status	Resident	#	1,169	1	1,015	138	832	620	325	866	70
		%	100.0%	.1%	86.8%	11.8%	71.2%	53.0%	27.8%	74.1%	6.0%
	Non-Resident	#	247	2	214	101	106	165	43	193	10
		%	100.0%	.8%	86.6%	40.9%	42.9%	66.8%	17.4%	78.1%	4.0%
Waiver		#	135	4	114	45	62	82	31	93	19
		%	100.0%	3.0%	84.4%	33.3%	45.9%	60.7%	23.0%	68.9%	14.1%
Residency Status	In-State	#	1,190	3	1,030	140	843	628	331	881	69
		%	100.0%	.3%	86.6%	11.8%	70.8%	52.8%	27.8%	74.0%	5.8%
	Out-of-State	#	47		40	5	31	24	14	32	4
		%	100.0%		85.1%	10.6%	66.0%	51.1%	29.8%	68.1%	8.5%
Out-of-US		#	314	4	273	139	126	215	54	239	26
		%	100.0%	1.3%	86.9%	44.3%	40.1%	68.5%	17.2%	76.1%	8.3%

Prepared by OISP, 31 Mar 03

a. These data are generated by a new procedure. A revised method of identifying the transfer cohorts and better tracking of Social Security Number changes and corrections has resulted in generally higher retention and graduation rates than those TAMU reported to the LBB as Key Performance Measures. The Key Measures may be found on OISP website under Reports/Miscellaneous/LBB Performance Measures - Annual.

b. Due to a programming glitch, International Transfer students were not coded as Transfer Students in SIMS prior to Fall 1997.

Transfer Student Headcount Retention/Graduation Rates^a

Transfer Year - Graduation Year 1996 - 2000

Transfer Cohort			Cohort Total		First Year		Second Year		Third Year		Fourth Year	
			#	%	Graduation	Retention	Graduation	Retention	Graduation	Retention	Graduation	Retention
Cohort	#	#	1,204		2	1,006	118	851	598	339	859	75
Total	%	%	100.0%		.2%	83.6%	9.8%	70.7%	49.7%	28.2%	71.3%	6.2%
Gender	Female	#	532			431	68	344	297	107	386	19
		%	100.0%			81.0%	12.8%	64.7%	55.8%	20.1%	72.6%	3.6%
	Male	#	672		2	575	50	507	301	232	473	56
		%	100.0%		.3%	85.6%	7.4%	75.4%	44.8%	34.5%	70.4%	8.3%
Ethnic Origin	White	#	1,066		2	888	107	751	549	280	764	61
		%	100.0%		.2%	83.3%	10.0%	70.5%	51.5%	26.3%	71.7%	5.7%
	Black	#	14			12	1	8	4	5	9	
		%	100.0%			85.7%	7.1%	57.1%	28.6%	35.7%	64.3%	
	Hispanic	#	82			72	8	60	33	33	59	8
		%	100.0%			87.8%	9.8%	73.2%	40.2%	40.2%	72.0%	9.8%
	Asian	#	38			30	2	28	10	19	23	6
		%	100.0%			78.9%	5.3%	73.7%	26.3%	50.0%	60.5%	15.8%
	American Indian	#	4			4		4	2	2	4	
		%	100.0%			100.0%		100.0%	50.0%	50.0%	100.0%	
	International ^b	#										
		%										
Unknown	#											
	%											
Tuition Status	Resident	#	1,137			953	108	812	566	327	815	72
		%	100.0%			83.8%	9.5%	71.4%	49.8%	28.8%	71.7%	6.3%
	Non-Resident	#	46		2	36	8	24	23	8	28	2
		%	100.0%		4.3%	78.3%	17.4%	52.2%	50.0%	17.4%	60.9%	4.3%
Tuition Waiver	#	21			17	2	15	9	4	16	1	
	%	100.0%			81.0%	9.5%	71.4%	42.9%	19.0%	76.2%	4.8%	
Residency Status	In-State	#	1,150			964	111	816	570	330	821	72
		%	100.0%			83.8%	9.7%	71.0%	49.6%	28.7%	71.4%	6.3%
	Out-of-State	#	53		2	41	7	34	28	8	37	3
		%	100.0%		3.8%	77.4%	13.2%	64.2%	52.8%	15.1%	69.8%	5.7%
Out-of-US	#	1			1		1		1	1		
	%	100.0%			100.0%		100.0%	100.0%	100.0%	100.0%		

Prepared by OISP, 31 Mar 03

a. These data are generated by a new procedure. A revised method of identifying the transfer cohorts and better tracking of Social Security Number changes and corrections has resulted in generally higher retention and graduation rates than those TAMU reported to the LBB as Key Performance Measures. The Key Measures may be found on OISP website under Reports/Miscellaneous/LBB Performance Measures - Annual.

b. Due to a programming glitch, International Transfer students were not coded as Transfer Students in SIMS prior to Fall 1997.

Transfer Student Headcount Retention/Graduation Rates^a

Transfer Year - Graduation Year 1995 - 1999

Transfer Cohort			Cohort Total		First Year		Second Year		Third Year		Fourth Year	
			#	%	Graduation	Retention	Graduation	Retention	Graduation	Retention	Graduation	Retention
Cohort	#	#	1,490	1	1,276	136	1,074	652	505	1,016	130	
Total	%	%	100.0%	.1%	85.6%	9.1%	72.1%	43.8%	33.9%	68.2%	8.7%	
Gender	Female	#	687	1	587	75	488	343	199	489	50	
		%	100.0%	.1%	85.4%	10.9%	71.0%	49.9%	29.0%	71.2%	7.3%	
	Male	#	803		689	61	586	309	306	527	80	
		%	100.0%		85.8%	7.6%	73.0%	38.5%	38.1%	65.6%	10.0%	
Ethnic	White	#	1,305	1	1,131	123	952	595	435	904	118	
		%	100.0%	.1%	86.7%	9.4%	73.0%	45.6%	33.3%	69.3%	9.0%	
Origin	Black	#	21		18	1	11	7	5	11		
		%	100.0%		85.7%	4.8%	52.4%	33.3%	23.8%	52.4%		
	Hispanic	#	111		85	9	73	34	43	65	10	
		%	100.0%		76.6%	8.1%	65.8%	30.6%	38.7%	58.6%	9.0%	
	Asian	#	51		40	3	36	14	22	34	2	
		%	100.0%		78.4%	5.9%	70.6%	27.5%	43.1%	66.7%	3.9%	
	American Indian	#	2		2		2	2		2		
		%	100.0%		100.0%		100.0%	100.0%		100.0%		
	International ^b	#										
		%										
	Unknown	#										
		%										
Tuition	Resident	#	1,424	1	1,224	129	1,036	628	488	977	126	
		%	100.0%	.1%	86.0%	9.1%	72.8%	44.1%	34.3%	68.6%	8.8%	
Status	Non-Resident	#	48		35	5	26	14	13	27	1	
		%	100.0%		72.9%	10.4%	54.2%	29.2%	27.1%	56.3%	2.1%	
	Tuition Waiver	#	18		17	2	12	10	4	12	3	
		%	100.0%		94.4%	11.1%	66.7%	55.6%	22.2%	66.7%	16.7%	
Residency	In-State	#	1,427	1	1,227	133	1,035	627	492	979	128	
		%	100.0%	.1%	86.0%	9.3%	72.5%	43.9%	34.5%	68.6%	9.0%	
Status	Out-of-State	#	62		48	3	39	25	13	37	2	
		%	100.0%		77.4%	4.8%	62.9%	40.3%	21.0%	59.7%	3.2%	
	Out-of-US	#	1		1							
		%	100.0%		100.0%							

Prepared by OISP, 31 Mar 03

a. These data are generated by a new procedure. A revised method of identifying the transfer cohorts and better tracking of Social Security Number changes and corrections has resulted in generally higher retention and graduation rates than those TAMU reported to the LBB as Key Performance Measures. The Key Measures may be found on OISP website under Reports/Miscellaneous/LBB Performance Measures - Annual.

b. Due to a programming glitch, International Transfer students were not coded as Transfer Students in SIMS prior to Fall 1997.

Transfer Student Headcount Retention/Graduation Rates^a

Transfer Year - Graduation Year 1994 - 1998

Transfer Cohort			Cohort Total		First Year		Second Year		Third Year		Fourth Year	
			#	%	Graduation	Retention	Graduation	Retention	Graduation	Retention	Graduation	Retention
Cohort Total	#	#	1,576		3	1,323	116	1,135	647	532	1,015	154
		%	100.0%		.2%	83.9%	7.4%	72.0%	41.1%	33.8%	64.4%	9.8%
Gender	Female	#	723		1	598	61	507	327	209	474	57
		%	100.0%		.1%	82.7%	8.4%	70.1%	45.2%	28.9%	65.6%	7.9%
	Male	#	853		2	725	55	628	320	323	541	97
		%	100.0%		.2%	85.0%	6.4%	73.6%	37.5%	37.9%	63.4%	11.4%
Ethnic Origin	White	#	1,398		3	1,182	107	1,009	595	458	921	126
		%	100.0%		.2%	84.5%	7.7%	72.2%	42.6%	32.8%	65.9%	9.0%
	Black	#	21			15		12	4	6	7	2
		%	100.0%			71.4%		57.1%	19.0%	28.6%	33.3%	9.5%
	Hispanic	#	100			80		7	35	43	61	18
		%	100.0%			80.0%		7.0%	35.0%	43.0%	61.0%	18.0%
	Asian	#	53			42		2	10	24	22	8
		%	100.0%			79.2%		3.8%	18.9%	45.3%	41.5%	15.1%
	American Indian	#	4			4		3	3	1	4	
		%	100.0%			100.0%		75.0%	75.0%	25.0%	100.0%	
International ^b	#											
	%											
Unknown	#											
	%											
Tuition Status	Resident	#	1,492		3	1,258	106	1,089	614	509	968	145
		%	100.0%		.2%	84.3%	7.1%	73.0%	41.2%	34.1%	64.9%	9.7%
	Non-Resident	#	55			38		8	23	11	28	6
		%	100.0%			69.1%		14.5%	41.8%	20.0%	50.9%	10.9%
Tuition Waiver	#	29			27		2	10	12	19	3	
	%	100.0%			93.1%		6.9%	34.5%	41.4%	65.5%	10.3%	
Residency Status	In-State	#	1,502		3	1,268	107	1,094	617	513	976	145
		%	100.0%		.2%	84.4%	7.1%	72.8%	41.1%	34.2%	65.0%	9.7%
	Out-of-State	#	71			52		9	29	17	38	8
		%	100.0%			73.2%		12.7%	40.8%	23.9%	53.5%	11.3%
Out-of-US	#	3			3		3	1	2	1	1	
	%	100.0%			100.0%		100.0%	33.3%	66.7%	33.3%	33.3%	

Prepared by OISP, 31 Mar 03

a. These data are generated by a new procedure. A revised method of identifying the transfer cohorts and better tracking of Social Security Number changes and corrections has resulted in generally higher retention and graduation rates than those TAMU reported to the LBB as Key Performance Measures. The Key Measures may be found on OISP website under Reports/Miscellaneous/LBB Performance Measures - Annual.

b. Due to a programming glitch, International Transfer students were not coded as Transfer Students in SIMS prior to Fall 1997.

Blinn TEAM Students

Blinn TEAM Cohorts			Cohort Total	First Year	
Cohort Year		#	#	Attrition	Retention
2001	#		357	64	293
	%		100.0%	17.9%	82.1%
2002	#		317		
	%		100.0%		

Prepared by OISP, 19 Mar 03

Blinn TEAM Students

Cohort Year 2002

Demographic Summary			Cohort Total	First Year
			#	Retention
University Total	#		317	
	%		100.0%	
Gender	Female	#	118	
		%	100.0%	
	Male	#	199	
		%	100.0%	
Ethnic Origin	White	#	279	
		%	100.0%	
	Black	#	4	
		%	100.0%	
	Hispanic	#	25	
		%	100.0%	
	Asian	#	4	
		%	100.0%	
	American Indian	#	3	
		%	100.0%	
	International	#	2	
		%	100.0%	
Tuition Status	Resident	#	313	
		%	100.0%	
	Non-Resident	#	4	
		%	100.0%	
Residency Status	Tuition Waiver	#		
		%		
	In-State	#	313	
		%	100.0%	
	Out-of-State	#	2	
		%	100.0%	
	Out-of-US	#	2	
		%	100.0%	
Ft/Pt Status	Part-Time	#	317	
	%	100.0%		
First Generation	No	#	245	
		%	100.0%	
	Unknown	#	4	
		%	100.0%	
	Yes	#	68	
	%	100.0%		

Prepared by OISP, 19 Mar 03

Blinn TEAM Students

Cohort Year 2001

Demographic Summary			Cohort Total	First Year
			#	Retention
University Total	#		357	293
	%		100.0%	82.1%
Gender	Female	#	157	133
		%	100.0%	84.7%
	Male	#	200	160
		%	100.0%	80.0%
Ethnic Origin	White	#	322	263
		%	100.0%	81.7%
	Black	#	5	4
		%	100.0%	80.0%
	Hispanic	#	19	17
		%	100.0%	89.5%
	Asian	#	8	7
		%	100.0%	87.5%
	American Indian	#	1	
		%	100.0%	
International		#	1	1
		%	100.0%	100.0%
	Unknown	#	1	1
		%	100.0%	100.0%
Tuition Status	Resident	#	354	290
		%	100.0%	81.9%
	Non-Resident	#	2	2
		%	100.0%	100.0%
Tuition Waiver		#	1	1
		%	100.0%	100.0%
Residency Status	In-State	#	356	292
		%	100.0%	82.0%
	Out-of-State	#		
		%		
Out-of-US		#	1	1
		%	100.0%	100.0%
Ft/Pt Status	Part-Time	#	357	293
		%	100.0%	82.1%
First Generation	No	#	282	234
		%	100.0%	83.0%
	Unknown	#	7	7
		%	100.0%	100.0%
Yes		#	68	52
		%	100.0%	76.5%

Prepared by OISP, 19 Mar 03

Six-Year COLLEGE Graduation Rates for First-Time In College (FTIC) Students
(Students enrolled after one year in the same college into which they entered as First-Time students)

All Colleges

Demographic Summary		Cohort Year - Graduation Year								
		Fall 1994 - Fall 2000			Fall 1995 - Fall 2001			Fall 1996 - Fall 2002		
		Cohort	Graduation	Graduation	Cohort	Graduation	Graduation	Cohort	Graduation	Graduation
		#	#	%	#	#	%	#	#	%
College Total		5,995	2,050	34.2%	6,029	2,330	38.6%	6,356	2,568	40.4%
Gender	Male	3,087	1,008	32.7%	3,027	1,148	37.9%	3,129	1,283	41.0%
	Female	2,908	1,042	35.8%	3,002	1,182	39.4%	3,227	1,285	39.8%
Ethnic Origin	White	4,586	1,646	35.9%	4,633	1,879	40.6%	5,175	2,142	41.4%
	Black	288	72	25.0%	281	80	28.5%	230	74	32.2%
	Hispanic	833	232	27.9%	887	271	30.6%	711	223	31.4%
	Asian	214	74	34.6%	169	73	43.2%	176	93	52.8%
	American Indian	15	3	20.0%	25	5	20.0%	24	10	41.7%
	International	59	23	39.0%	34	22	64.7%	40	26	65.0%
Tuition Status	Resident Tuition	5,365	1,810	33.7%	5,327	1,992	37.4%	5,689	2,238	39.3%
	Non-Resident	196	58	29.6%	231	96	41.6%	221	92	41.6%
	Tuition Waiver	434	182	41.9%	471	242	51.4%	446	238	53.4%
Residency Status	In-State	5,583	1,907	34.2%	5,579	2,127	38.1%	5,929	2,375	40.1%
	Out-of-State	340	111	32.6%	414	180	43.5%	378	163	43.1%
	Out-of-US	72	32	44.4%	36	23	63.9%	49	30	61.2%
Ft/Pt Status	Part-Time	43	11	25.6%	44	7	15.9%	30	10	33.3%
	Full-Time	5,952	2,039	34.3%	5,985	2,323	38.8%	6,326	2,558	40.4%

Prepared by OISP, 20 Jun 03

Six-Year COLLEGE Graduation Rates for First-Time In College (FTIC) Students
(Students enrolled after one year in the same college into which they entered as First-Time students)

College Agriculture

Demographic Summary		Cohort Year - Graduation Year								
		Fall 1994 - Fall 2000			Fall 1995 - Fall 2001			Fall 1996 - Fall 2002		
		Cohort	Graduation	Graduation	Cohort	Graduation	Graduation	Cohort	Graduation	Graduation
		#	#	%	#	#	%	#	#	%
College Total		506	293	57.9%	533	317	59.5%	582	352	60.5%
Gender	Male	221	120	54.3%	241	148	61.4%	257	159	61.9%
	Female	285	173	60.7%	292	169	57.9%	325	193	59.4%
Ethnic Origin	White	430	263	61.2%	454	278	61.2%	510	309	60.6%
	Black	15	3	20.0%	12	4	33.3%	9	3	33.3%
	Hispanic	46	19	41.3%	48	26	54.2%	48	29	60.4%
	Asian	8	4	50.0%	14	5	35.7%	11	8	72.7%
	American Indian	1			2	1	50.0%	1		
	International	6	4	66.7%	3	3	100.0%	3	3	100.0%
Tuition Status	Resident Tuition	434	248	57.1%	443	261	58.9%	503	296	58.8%
	Non-Resident	13	8	61.5%	25	13	52.0%	15	9	60.0%
	Tuition Waiver	59	37	62.7%	65	43	66.2%	64	47	73.4%
Residency Status	In-State	472	271	57.4%	485	292	60.2%	543	330	60.8%
	Out-of-State	28	18	64.3%	44	21	47.7%	35	19	54.3%
	Out-of-US	6	4	66.7%	4	4	100.0%	4	3	75.0%
Ft/Pt Status	Part-Time				5	1	20.0%	1	1	100.0%
	Full-Time	506	293	57.9%	528	316	59.8%	581	351	60.4%

Prepared by OISP, 20 Jun 03

Six-Year COLLEGE Graduation Rates for First-Time In College (FTIC) Students
(Students enrolled after one year in the same college into which they entered as First-Time students)

College Architecture

Demographic Summary		Cohort Year - Graduation Year								
		Fall 1994 - Fall 2000			Fall 1995 - Fall 2001			Fall 1996 - Fall 2002		
		Cohort	Graduation	Graduation	Cohort	Graduation	Graduation	Cohort	Graduation	Graduation
		#	#	%	#	#	%	#	#	%
College Total		138	68	49.3%	185	104	56.2%	188	113	60.1%
Gender	Male	86	39	45.3%	127	72	56.7%	111	61	55.0%
	Female	52	29	55.8%	58	32	55.2%	77	52	67.5%
Ethnic Origin	White	96	45	46.9%	144	87	60.4%	147	88	59.9%
	Black	7	3	42.9%	3	1	33.3%	3	1	33.3%
	Hispanic	26	12	46.2%	31	14	45.2%	30	16	53.3%
	Asian	6	5	83.3%	5	2	40.0%	3	3	100.0%
	American Indian	1	1	100.0%	2			2	2	100.0%
	International	2	2	100.0%				3	3	100.0%
Tuition Status	Resident Tuition	127	59	46.5%	163	87	53.4%	172	103	59.9%
	Non-Resident	6	5	83.3%	11	10	90.9%	7	5	71.4%
	Tuition Waiver	5	4	80.0%	11	7	63.6%	9	5	55.6%
Residency Status	In-State	131	63	48.1%	169	90	53.3%	177	107	60.5%
	Out-of-State	5	3	60.0%	16	14	87.5%	8	3	37.5%
	Out-of-US	2	2	100.0%				3	3	100.0%
Ft/Pt Status	Part-Time				3	1	33.3%			
	Full-Time	138	68	49.3%	182	103	56.6%	188	113	60.1%

Prepared by OISP, 20 Jun 03

Six-Year COLLEGE Graduation Rates for First-Time In College (FTIC) Students
(Students enrolled after one year in the same college into which they entered as First-Time students)

College Business Admin

Demographic Summary		Cohort Year - Graduation Year								
		Fall 1994 - Fall 2000			Fall 1995 - Fall 2001			Fall 1996 - Fall 2002		
		Cohort	Graduation	Graduation	Cohort	Graduation	Graduation	Cohort	Graduation	Graduation
		#	#	%	#	#	%	#	#	%
College Total		799	457	57.2%	759	451	59.4%	862	547	63.5%
Gender	Male	369	194	52.6%	339	197	58.1%	381	244	64.0%
	Female	430	263	61.2%	420	254	60.5%	481	303	63.0%
Ethnic Origin	White	646	380	58.8%	601	366	60.9%	708	466	65.8%
	Black	43	17	39.5%	39	21	53.8%	35	16	45.7%
	Hispanic	88	48	54.5%	95	48	50.5%	84	40	47.6%
	Asian	15	9	60.0%	14	9	64.3%	24	18	75.0%
	American Indian	1	1	100.0%	3	2	66.7%	2	2	100.0%
	International	6	2	33.3%	7	5	71.4%	9	5	55.6%
Tuition Status	Resident Tuition	748	428	57.2%	696	409	58.8%	796	507	63.7%
	Non-Resident	25	8	32.0%	23	14	60.9%	30	15	50.0%
	Tuition Waiver	26	21	80.8%	40	28	70.0%	36	25	69.4%
Residency Status	In-State	762	440	57.7%	719	428	59.5%	817	523	64.0%
	Out-of-State	28	13	46.4%	33	18	54.5%	32	17	53.1%
	Out-of-US	9	4	44.4%	7	5	71.4%	13	7	53.8%
Ft/Pt Status	Part-Time	8	3	37.5%	6	3	50.0%	5	3	60.0%
	Full-Time	791	454	57.4%	753	448	59.5%	857	544	63.5%

Prepared by OISP, 20 Jun 03

Six-Year COLLEGE Graduation Rates for First-Time In College (FTIC) Students
(Students enrolled after one year in the same college into which they entered as First-Time students)

College Education

Demographic Summary		Cohort Year - Graduation Year								
		Fall 1994 - Fall 2000			Fall 1995 - Fall 2001			Fall 1996 - Fall 2002		
		Cohort	Graduation	Graduation	Cohort	Graduation	Graduation	Cohort	Graduation	Graduation
		#	#	%	#	#	%	#	#	%
College Total		166	99	59.6%	190	126	66.3%	209	116	55.5%
Gender	Male	20	5	25.0%	19	9	47.4%	34	17	50.0%
	Female	146	94	64.4%	171	117	68.4%	175	99	56.6%
Ethnic Origin	White	131	79	60.3%	171	119	69.6%	193	109	56.5%
	Black	10	5	50.0%	1					
	Hispanic	22	12	54.5%	17	7	41.2%	16	7	43.8%
	Asian	2	2	100.0%	1					
	American Indian	1	1	100.0%						
	International									
Tuition Status	Resident Tuition	158	96	60.8%	180	118	65.6%	196	109	55.6%
	Non-Resident	1			7	6	85.7%	4	3	75.0%
	Tuition Waiver	7	3	42.9%	3	2	66.7%	9	4	44.4%
Residency Status	In-State	162	99	61.1%	180	118	65.6%	204	112	54.9%
	Out-of-State	4			10	8	80.0%	4	3	75.0%
	Out-of-US							1	1	100.0%
Ft/Pt Status	Part-Time				2	1	50.0%	3	1	33.3%
	Full-Time	166	99	59.6%	188	125	66.5%	206	115	55.8%

Prepared by OISP, 20 Jun 03

Six-Year COLLEGE Graduation Rates for First-Time In College (FTIC) Students
(Students enrolled after one year in the same college into which they entered as First-Time students)

College Engineering

Demographic Summary		Cohort Year - Graduation Year								
		Fall 1994 - Fall 2000			Fall 1995 - Fall 2001			Fall 1996 - Fall 2002		
		Cohort	Graduation	Graduation	Cohort	Graduation	Graduation	Cohort	Graduation	Graduation
		#	#	%	#	#	%	#	#	%
College Total		1,495	644	43.1%	1,386	679	49.0%	1,454	724	49.8%
Gender	Male	1,144	497	43.4%	1,071	518	48.4%	1,137	561	49.3%
	Female	351	147	41.9%	315	161	51.1%	317	163	51.4%
Ethnic Origin	White	1,121	506	45.1%	1,076	541	50.3%	1,147	583	50.8%
	Black	56	18	32.1%	50	21	42.0%	39	15	38.5%
	Hispanic	212	74	34.9%	184	73	39.7%	173	67	38.7%
	Asian	70	32	45.7%	51	29	56.9%	68	43	63.2%
	American Indian	3			3	1	33.3%	8	4	50.0%
	International	33	14	42.4%	22	14	63.6%	19	12	63.2%
Tuition Status	Resident Tuition	1,285	545	42.4%	1,152	547	47.5%	1,256	604	48.1%
	Non-Resident	69	28	40.6%	74	37	50.0%	61	36	59.0%
	Tuition Waiver	141	71	50.4%	160	95	59.4%	137	84	61.3%
Residency Status	In-State	1,349	579	42.9%	1,218	587	48.2%	1,320	647	49.0%
	Out-of-State	108	47	43.5%	145	78	53.8%	114	64	56.1%
	Out-of-US	38	18	47.4%	23	14	60.9%	20	13	65.0%
Ft/Pt Status	Part-Time	17	6	35.3%	11	1	9.1%	10	2	20.0%
	Full-Time	1,478	638	43.2%	1,375	678	49.3%	1,444	722	50.0%

Prepared by OISP, 20 Jun 03

Six-Year COLLEGE Graduation Rates for First-Time In College (FTIC) Students
(Students enrolled after one year in the same college into which they entered as First-Time students)

College Geosciences

Demographic Summary		Cohort Year - Graduation Year								
		Fall 1994 - Fall 2000			Fall 1995 - Fall 2001			Fall 1996 - Fall 2002		
		Cohort	Graduation	Graduation	Cohort	Graduation	Graduation	Cohort	Graduation	Graduation
		#	#	%	#	#	%	#	#	%
College Total		41	17	41.5%	50	14	28.0%	46	22	47.8%
Gender	Male	23	12	52.2%	25	7	28.0%	23	10	43.5%
	Female	18	5	27.8%	25	7	28.0%	23	12	52.2%
Ethnic Origin	White	38	17	44.7%	47	14	29.8%	43	21	48.8%
	Black							1		
	Hispanic	3			3			1	1	100.0%
	Asian									
	American Indian							1		
Tuition Status	Resident Tuition	30	13	43.3%	39	11	28.2%	33	15	45.5%
	Non-Resident	3	1	33.3%	2			7	2	28.6%
	Tuition Waiver	8	3	37.5%	9	3	33.3%	6	5	83.3%
Residency Status	In-State	35	16	45.7%	42	11	26.2%	38	18	47.4%
	Out-of-State	6	1	16.7%	8	3	37.5%	8	4	50.0%
Ft/Pt Status	Part-Time									
	Full-Time	41	17	41.5%	50	14	28.0%	46	22	47.8%

Prepared by OISP, 20 Jun 03

Six-Year COLLEGE Graduation Rates for First-Time In College (FTIC) Students
(Students enrolled after one year in the same college into which they entered as First-Time students)

College General Studies

Demographic Summary		Cohort Year - Graduation Year								
		Fall 1994 - Fall 2000			Fall 1995 - Fall 2001			Fall 1996 - Fall 2002		
		Cohort	Graduation	Graduation	Cohort	Graduation	Graduation	Cohort	Graduation	Graduation
		#	#	%	#	#	%	#	#	%
College Total		1,206			1,251			1,256		
Gender	Male	626			630			587		
	Female	580			621			669		
Ethnic Origin	White	887			887			1,006		
	Black	73			98			65		
	Hispanic	206			242			160		
	Asian	33			15			19		
	American Indian	1			8			4		
	International	6			1			2		
Tuition Status	Resident Tuition	1,103			1,156			1,166		
	Non-Resident	45			40			39		
	Tuition Waiver	58			55			51		
Residency Status	In-State	1,132			1,197			1,190		
	Out-of-State	67			53			64		
	Out-of-US	7			1			2		
Ft/Pt Status	Part-Time	8			9			4		
	Full-Time	1,198			1,242			1,252		

Prepared by OISP, 20 Jun 03

Six-Year COLLEGE Graduation Rates for First-Time In College (FTIC) Students
(Students enrolled after one year in the same college into which they entered as First-Time students)

College Liberal Arts

Demographic Summary		Cohort Year - Graduation Year								
		Fall 1994 - Fall 2000			Fall 1995 - Fall 2001			Fall 1996 - Fall 2002		
		Cohort	Graduation	Graduation	Cohort	Graduation	Graduation	Cohort	Graduation	Graduation
		#	#	%	#	#	%	#	#	%
College Total		517	274	53.0%	462	270	58.4%	541	321	59.3%
Gender	Male	144	63	43.8%	141	66	46.8%	155	91	58.7%
	Female	373	211	56.6%	321	204	63.6%	386	230	59.6%
Ethnic Origin	White	392	215	54.8%	328	186	56.7%	448	270	60.3%
	Black	35	18	51.4%	28	18	64.3%	26	17	65.4%
	Hispanic	72	31	43.1%	94	58	61.7%	55	24	43.6%
	Asian	15	9	60.0%	10	7	70.0%	10	8	80.0%
	American Indian	1			2	1	50.0%			
	International	2	1	50.0%				2	2	100.0%
Tuition Status	Resident Tuition	476	251	52.7%	411	238	57.9%	480	282	58.8%
	Non-Resident	11	4	36.4%	19	10	52.6%	23	14	60.9%
	Tuition Waiver	30	19	63.3%	32	22	68.8%	38	25	65.8%
Residency Status	In-State	486	256	52.7%	424	249	58.7%	491	290	59.1%
	Out-of-State	26	15	57.7%	38	21	55.3%	48	29	60.4%
	Out-of-US	5	3	60.0%				2	2	100.0%
Ft/Pt Status	Part-Time	3	2	66.7%	6			4	2	50.0%
	Full-Time	514	272	52.9%	456	270	59.2%	537	319	59.4%

Prepared by OISP, 20 Jun 03

Six-Year COLLEGE Graduation Rates for First-Time In College (FTIC) Students
(Students enrolled after one year in the same college into which they entered as First-Time students)

College Science

Demographic Summary		Cohort Year - Graduation Year								
		Fall 1994 - Fall 2000			Fall 1995 - Fall 2001			Fall 1996 - Fall 2002		
		Cohort	Graduation	Graduation	Cohort	Graduation	Graduation	Cohort	Graduation	Graduation
		#	#	%	#	#	%	#	#	%
College Total		654	126	19.3%	610	161	26.4%	595	163	27.4%
Gender	Male	269	55	20.4%	251	61	24.3%	238	67	28.2%
	Female	385	71	18.4%	359	100	27.9%	357	96	26.9%
Ethnic Origin	White	467	82	17.6%	447	120	26.8%	457	126	27.6%
	Black	37	8	21.6%	31	6	19.4%	30	10	33.3%
	Hispanic	101	28	27.7%	94	23	24.5%	79	18	22.8%
	Asian	42	8	19.0%	36	12	33.3%	26	8	30.8%
	American Indian	4			1			2		
	International	3			1			1	1	100.0%
Tuition Status	Resident Tuition	561	100	17.8%	533	136	25.5%	511	129	25.2%
	Non-Resident	14	4	28.6%	17	3	17.6%	18	6	33.3%
	Tuition Waiver	79	22	27.8%	60	22	36.7%	66	28	42.4%
Residency Status	In-State	601	113	18.8%	562	151	26.9%	550	145	26.4%
	Out-of-State	49	12	24.5%	47	10	21.3%	42	17	40.5%
	Out-of-US	4	1	25.0%	1			3	1	33.3%
Ft/Pt Status	Part-Time	4			1			2		
	Full-Time	650	126	19.4%	609	161	26.4%	593	163	27.5%

Prepared by OISP, 20 Jun 03

Six-Year COLLEGE Graduation Rates for First-Time In College (FTIC) Students
(Students enrolled after one year in the same college into which they entered as First-Time students)

College Veterinary Medicine

Demographic Summary		Cohort Year - Graduation Year								
		Fall 1994 - Fall 2000			Fall 1995 - Fall 2001			Fall 1996 - Fall 2002		
		Cohort	Graduation	Graduation	Cohort	Graduation	Graduation	Cohort	Graduation	Graduation
		#	#	%	#	#	%	#	#	%
College Total		473	72	15.2%	603	208	34.5%	623	210	33.7%
Gender	Male	185	23	12.4%	183	70	38.3%	206	73	35.4%
	Female	288	49	17.0%	420	138	32.9%	417	137	32.9%
Ethnic Origin	White	378	59	15.6%	478	168	35.1%	516	170	32.9%
	Black	12			19	9	47.4%	22	12	54.5%
	Hispanic	57	8	14.0%	79	22	27.8%	65	21	32.3%
	Asian	23	5	21.7%	23	9	39.1%	15	5	33.3%
	American Indian	2			4			4	2	50.0%
	International	1						1		
Tuition Status	Resident Tuition	443	70	15.8%	554	185	33.4%	576	193	33.5%
	Non-Resident	9			13	3	23.1%	17	2	11.8%
	Tuition Waiver	21	2	9.5%	36	20	55.6%	30	15	50.0%
Residency Status	In-State	453	70	15.5%	583	201	34.5%	599	203	33.9%
	Out-of-State	19	2	10.5%	20	7	35.0%	23	7	30.4%
Ft/Pt Status	Part-Time	3			1			1	1	100.0%
	Full-Time	470	72	15.3%	602	208	34.6%	622	209	33.6%

Prepared by OISP, 20 Jun 03

First-Year COLLEGE Retention Rates for First-Time In College (FTIC) Students
(Students enrolled after one year in the same college into which they entered as First-Time students)

All Colleges

1996-2001 Cohorts Retention within College		Cohort Year - First Year Retained					
		Fall 1996 - Fall 1997	Fall 1997 - Fall 1998	Fall 1998 - Fall 1999	Fall 1999 - Fall 2000	Fall 2000 - Fall 2001	Fall 2001 - Fall 2002
		Retention	Retention	Retention	Retention	Retention	Retention
		%	%	%	%	%	%
College Total		69.1%	70.0%	67.3%	68.1%	68.5%	68.9%
Gender	Male	71.6%	71.1%	68.7%	69.0%	68.9%	69.8%
	Female	66.7%	68.9%	65.9%	67.4%	68.0%	68.1%
Ethnic Origin	White	69.6%	70.5%	67.7%	68.2%	69.3%	69.7%
	Black	70.0%	65.0%	64.0%	66.1%	68.2%	63.6%
	Hispanic	63.0%	66.8%	62.6%	66.1%	58.6%	63.0%
	Asian	76.7%	69.1%	71.0%	73.2%	73.2%	72.8%
	American Indian	70.8%	65.5%	55.3%	66.7%	71.4%	59.5%
	International	75.0%	78.0%	80.0%	71.7%	90.0%	100.0%
	Unknown			71.4%	69.9%	71.9%	73.0%
Tuition Status	Resident Tuition	68.8%	69.5%	66.9%	68.2%	68.4%	69.0%
	Non-Resident	67.4%	70.7%	66.0%	62.4%	68.1%	68.8%
	Tuition Waiver	74.9%	75.2%	74.3%	69.3%	70.1%	64.2%
Residency Status	In-State	69.0%	69.8%	67.0%	68.2%	68.4%	69.0%
	Out-of-State	70.4%	71.6%	70.4%	62.0%	68.9%	66.4%
	Out-of-US	73.5%	77.4%	81.9%	73.6%	81.8%	88.9%
Ft/Pt Status	Part-Time	53.3%	75.7%	75.0%	60.6%	75.9%	70.7%
	Full-Time	69.2%	69.9%	67.3%	68.2%	68.4%	68.8%

Prepared by OISP, 20 Jun 03

First-Year COLLEGE Retention Rates for First-Time In College (FTIC) Students
(Students enrolled after one year in the same college into which they entered as First-Time students)

Agriculture

1996-2001 Cohorts Retention within College		Cohort Year - First Year Retained					
		Fall 1996 - Fall 1997	Fall 1997 - Fall 1998	Fall 1998 - Fall 1999	Fall 1999 - Fall 2000	Fall 2000 - Fall 2001	Fall 2001 - Fall 2002
		Retention	Retention	Retention	Retention	Retention	Retention
		%	%	%	%	%	%
College Total		78.2%	79.8%	82.9%	79.1%	83.3%	83.8%
Gender	Male	78.6%	84.9%	86.0%	80.7%	82.8%	85.8%
	Female	77.8%	75.9%	80.6%	77.8%	83.7%	82.1%
Ethnic Origin	White	77.6%	80.4%	83.7%	79.8%	84.4%	83.4%
	Black	66.7%	54.5%	72.7%	42.9%	100.0%	100.0%
	Hispanic	81.3%	75.0%	77.8%	75.0%	66.7%	81.5%
	Asian	90.9%	83.3%	71.4%	91.7%	86.7%	80.0%
	American Indian	100.0%	100.0%	100.0%	100.0%	50.0%	100.0%
	International	100.0%	100.0%	66.7%	100.0%		100.0%
	Unknown			85.7%	33.3%	91.7%	
Tuition Status	Resident Tuition	77.3%	79.6%	83.1%	79.2%	83.4%	83.8%
	Non-Resident	73.3%	92.3%	64.3%	37.5%	50.0%	88.9%
	Tuition Waiver	85.9%	78.8%	86.3%	83.3%	91.3%	81.3%
Residency Status	In-State	78.5%	79.6%	83.2%	79.5%	83.4%	83.8%
	Out-of-State	74.3%	80.9%	77.4%	68.0%	85.7%	81.0%
	Out-of-US	75.0%	100.0%	80.0%	87.5%		100.0%
Ft/Pt Status	Part-Time	100.0%	100.0%	100.0%	100.0%	100.0%	80.0%
	Full-Time	78.1%	79.6%	82.8%	79.0%	83.2%	83.8%

Prepared by OISP, 20 Jun 03

First-Year COLLEGE Retention Rates for First-Time In College (FTIC) Students
(Students enrolled after one year in the same college into which they entered as First-Time students)

Architecture

1996-2001 Cohorts Retention within College		Cohort Year - First Year Retained					
		Fall 1996 - Fall 1997	Fall 1997 - Fall 1998	Fall 1998 - Fall 1999	Fall 1999 - Fall 2000	Fall 2000 - Fall 2001	Fall 2001 - Fall 2002
		Retention	Retention	Retention	Retention	Retention	Retention
		%	%	%	%	%	%
College Total		80.3%	76.8%	74.2%	79.6%	78.5%	78.9%
Gender	Male	78.4%	77.2%	71.2%	83.9%	80.0%	75.0%
	Female	83.1%	76.3%	78.2%	72.6%	76.5%	82.4%
Ethnic Origin	White	80.3%	77.2%	76.3%	81.0%	81.3%	78.2%
	Black	100.0%		75.0%	100.0%	80.0%	
	Hispanic	73.3%	87.5%	58.6%	68.8%	61.9%	86.7%
	Asian	100.0%	66.7%	75.0%	50.0%	100.0%	83.3%
	American Indian	100.0%	100.0%		100.0%	100.0%	100.0%
	International	100.0%					
	Unknown			80.0%	80.0%		
Tuition Status	Resident Tuition	79.7%	77.7%	74.3%	79.9%	78.1%	78.6%
	Non-Resident	85.7%	60.0%	42.9%	66.7%		100.0%
	Tuition Waiver	88.9%	70.0%	90.9%	83.3%	100.0%	
Residency Status	In-State	79.7%	77.5%	74.6%	80.4%	78.1%	78.6%
	Out-of-State	87.5%	80.0%	71.4%	70.0%	100.0%	100.0%
	Out-of-US	100.0%			50.0%		
Ft/Pt Status	Part-Time			100.0%	25.0%	50.0%	100.0%
	Full-Time	80.3%	76.8%	74.1%	80.7%	78.8%	78.7%

Prepared by OISP, 20 Jun 03

First-Year COLLEGE Retention Rates for First-Time In College (FTIC) Students
(Students enrolled after one year in the same college into which they entered as First-Time students)

Business Admin

1996-2001 Cohorts Retention within College		Cohort Year - First Year Retained					
		Fall 1996 - Fall 1997	Fall 1997 - Fall 1998	Fall 1998 - Fall 1999	Fall 1999 - Fall 2000	Fall 2000 - Fall 2001	Fall 2001 - Fall 2002
		Retention	Retention	Retention	Retention	Retention	Retention
		%	%	%	%	%	%
College Total		81.1%	78.6%	81.3%	85.1%	86.8%	86.5%
Gender	Male	82.4%	76.0%	81.5%	83.4%	87.9%	85.6%
	Female	80.0%	80.8%	81.1%	86.5%	86.1%	87.1%
Ethnic Origin	White	82.8%	79.4%	82.4%	86.2%	87.4%	87.5%
	Black	80.0%	81.3%	70.8%	77.8%	80.0%	83.3%
	Hispanic	66.7%	71.1%	76.4%	74.6%	80.6%	78.5%
	Asian	83.3%	75.0%	73.5%	80.0%	86.8%	88.9%
	American Indian	100.0%	87.5%	40.0%	100.0%	90.0%	
	International	77.8%	75.0%	100.0%	88.9%	100.0%	
	Unknown			73.7%	85.7%	92.3%	66.7%
Tuition Status	Resident Tuition	81.2%	78.7%	81.3%	85.9%	87.2%	86.6%
	Non-Resident	73.3%	72.4%	68.0%	73.9%	72.7%	100.0%
	Tuition Waiver	86.1%	82.4%	89.4%	73.7%	77.8%	72.7%
Residency Status	In-State	81.3%	79.0%	81.3%	85.7%	87.2%	86.4%
	Out-of-State	78.1%	69.2%	77.1%	66.7%	75.0%	92.3%
	Out-of-US	76.9%	75.0%	100.0%	78.9%	100.0%	
Ft/Pt Status	Part-Time	80.0%	80.0%	85.7%	50.0%	100.0%	
	Full-Time	81.1%	78.6%	81.3%	85.2%	86.8%	86.5%

Prepared by OISP, 20 Jun 03

First-Year COLLEGE Retention Rates for First-Time In College (FTIC) Students
(Students enrolled after one year in the same college into which they entered as First-Time students)

Education

1996-2001 Cohorts Retention within College		Cohort Year - First Year Retained					
		Fall 1996 - Fall 1997	Fall 1997 - Fall 1998	Fall 1998 - Fall 1999	Fall 1999 - Fall 2000	Fall 2000 - Fall 2001	Fall 2001 - Fall 2002
		Retention	Retention	Retention	Retention	Retention	Retention
		%	%	%	%	%	%
College Total		72.2%	73.9%	71.5%	75.5%	75.9%	78.5%
Gender	Male	67.6%	47.2%	51.5%	70.7%	70.5%	73.1%
	Female	73.1%	78.5%	74.5%	76.4%	76.8%	79.1%
Ethnic Origin	White	74.1%	74.4%	73.2%	74.8%	77.8%	79.3%
	Black		75.0%	33.3%	75.0%	50.0%	100.0%
	Hispanic	50.0%	63.2%	72.7%	87.5%	50.0%	57.9%
	Asian		100.0%		60.0%		100.0%
	American Indian		100.0%	100.0%	100.0%	100.0%	100.0%
	International					100.0%	
	Unknown			33.3%	100.0%		57.1%
Tuition Status	Resident Tuition	72.4%	74.0%	72.0%	75.5%	75.9%	79.7%
	Non-Resident	75.0%	80.0%	40.0%	60.0%	100.0%	28.6%
	Tuition Waiver	66.7%	66.7%	77.8%	87.5%	60.0%	100.0%
Residency Status	In-State	72.1%	73.7%	71.8%	75.8%	75.9%	79.7%
	Out-of-State	75.0%	77.8%	62.5%	50.0%	71.4%	37.5%
	Out-of-US	100.0%			100.0%	100.0%	
Ft/Pt Status	Part-Time	33.3%		50.0%		75.0%	100.0%
	Full-Time	72.8%	73.9%	71.7%	75.5%	75.9%	78.4%

Prepared by OISP, 20 Jun 03

First-Year COLLEGE Retention Rates for First-Time In College (FTIC) Students
(Students enrolled after one year in the same college into which they entered as First-Time students)

Engineering

1996-2001 Cohorts Retention within College		Cohort Year - First Year Retained					
		Fall 1996 - Fall 1997	Fall 1997 - Fall 1998	Fall 1998 - Fall 1999	Fall 1999 - Fall 2000	Fall 2000 - Fall 2001	Fall 2001 - Fall 2002
		Retention	Retention	Retention	Retention	Retention	Retention
		%	%	%	%	%	%
College Total		74.4%	75.1%	67.4%	66.3%	66.8%	69.8%
Gender	Male	75.5%	75.6%	67.9%	67.7%	68.4%	70.7%
	Female	70.7%	72.9%	65.3%	61.6%	62.1%	67.0%
Ethnic Origin	White	73.8%	75.3%	66.7%	65.7%	66.9%	70.5%
	Black	76.9%	71.4%	65.1%	66.1%	62.8%	73.2%
	Hispanic	73.4%	70.3%	63.2%	63.2%	59.3%	64.0%
	Asian	83.8%	76.2%	79.0%	80.8%	80.5%	71.4%
	American Indian	87.5%	50.0%	40.0%	61.5%	50.0%	54.5%
	International	78.9%	90.0%	90.3%	76.0%	100.0%	100.0%
	Unknown			76.7%	72.7%	77.4%	100.0%
Tuition Status	Resident Tuition	73.6%	74.4%	66.6%	66.4%	66.9%	70.2%
	Non-Resident	78.7%	80.6%	78.3%	68.6%	65.4%	73.2%
	Tuition Waiver	79.6%	77.4%	70.5%	64.9%	65.7%	59.0%
Residency Status	In-State	74.0%	74.5%	66.5%	66.1%	66.9%	70.0%
	Out-of-State	78.1%	76.4%	74.2%	62.3%	62.9%	65.1%
	Out-of-US	80.0%	89.2%	85.4%	76.5%	100.0%	100.0%
Ft/Pt Status	Part-Time	40.0%	85.7%	100.0%	70.0%	75.0%	85.7%
	Full-Time	74.7%	75.0%	67.3%	66.3%	66.8%	69.7%

Prepared by OISP, 20 Jun 03

First-Year COLLEGE Retention Rates for First-Time In College (FTIC) Students
(Students enrolled after one year in the same college into which they entered as First-Time students)

Geosciences

1996-2001 Cohorts Retention within College		Cohort Year - First Year Retained					
		Fall 1996 - Fall 1997	Fall 1997 - Fall 1998	Fall 1998 - Fall 1999	Fall 1999 - Fall 2000	Fall 2000 - Fall 2001	Fall 2001 - Fall 2002
		Retention	Retention	Retention	Retention	Retention	Retention
		%	%	%	%	%	%
College Total		58.7%	66.0%	42.1%	66.2%	53.3%	54.2%
Gender	Male	56.5%	66.7%	40.5%	69.2%	56.7%	61.3%
	Female	60.9%	65.4%	44.1%	64.1%	50.0%	46.4%
Ethnic Origin	White	58.1%	66.0%	40.0%	69.0%	53.7%	56.4%
	Black	100.0%	50.0%		50.0%		
	Hispanic		100.0%	66.7%	33.3%	50.0%	50.0%
	Asian						
	American Indian	100.0%		50.0%			
	International						
	Unknown			100.0%	100.0%	50.0%	
Tuition Status	Resident Tuition	57.6%	66.7%	37.7%	67.3%	52.7%	55.2%
	Non-Resident	42.9%		66.7%			
	Tuition Waiver	83.3%	75.0%	100.0%	60.0%	60.0%	
Residency Status	In-State	60.5%	66.0%	38.6%	66.7%	52.7%	55.2%
	Out-of-State	50.0%	66.7%	83.3%	50.0%	60.0%	
	Out-of-US						
Ft/Pt Status	Part-Time			100.0%			
	Full-Time	58.7%	66.0%	41.3%	66.2%	54.2%	54.2%

Prepared by OISP, 20 Jun 03

First-Year COLLEGE Retention Rates for First-Time In College (FTIC) Students
(Students enrolled after one year in the same college into which they entered as First-Time students)

General Studies

1996-2001 Cohorts Retention within College		Cohort Year - First Year Retained					
		Fall 1996 - Fall 1997	Fall 1997 - Fall 1998	Fall 1998 - Fall 1999	Fall 1999 - Fall 2000	Fall 2000 - Fall 2001	Fall 2001 - Fall 2002
		Retention	Retention	Retention	Retention	Retention	Retention
		%	%	%	%	%	%
College Total		59.2%	57.3%	47.3%	55.3%	55.5%	55.7%
Gender	Male	60.5%	58.5%	51.3%	57.0%	57.4%	57.9%
	Female	58.1%	56.2%	44.8%	54.1%	53.7%	53.1%
Ethnic Origin	White	60.1%	57.6%	47.7%	54.0%	56.0%	56.1%
	Black	64.6%	64.8%	47.2%	65.9%	68.1%	59.2%
	Hispanic	51.9%	56.5%	47.1%	67.0%	48.7%	52.3%
	Asian	63.2%	41.7%	18.8%	55.3%	48.6%	54.8%
	American Indian	50.0%	33.3%	42.9%	66.7%	80.0%	16.7%
	International		50.0%	83.3%	33.3%		
	Unknown			45.5%	55.6%	52.6%	53.8%
Tuition Status	Resident Tuition	59.8%	57.3%	47.3%	55.8%	55.7%	55.9%
	Non-Resident	61.5%	52.6%	51.4%	55.1%	55.9%	52.3%
	Tuition Waiver	45.1%	62.2%	42.9%	38.9%	44.4%	48.1%
Residency Status	In-State	59.5%	57.5%	47.0%	55.9%	55.7%	56.0%
	Out-of-State	56.3%	55.6%	46.5%	42.9%	52.9%	46.7%
	Out-of-US		50.0%	87.5%	43.8%		
Ft/Pt Status	Part-Time	75.0%	85.7%	50.0%	40.0%	66.7%	70.4%
	Full-Time	59.2%	57.1%	47.3%	55.4%	55.5%	51.7%

Prepared by OISP, 20 Jun 03

First-Year COLLEGE Retention Rates for First-Time In College (FTIC) Students
(Students enrolled after one year in the same college into which they entered as First-Time students)

Liberal Arts

1996-2001 Cohorts Retention within College		Cohort Year - First Year Retained					
		Fall 1996 - Fall 1997	Fall 1997 - Fall 1998	Fall 1998 - Fall 1999	Fall 1999 - Fall 2000	Fall 2000 - Fall 2001	Fall 2001 - Fall 2002
		Retention	Retention	Retention	Retention	Retention	Retention
		%	%	%	%	%	%
College Total		73.0%	71.7%	73.6%	74.9%	74.1%	72.2%
Gender	Male	75.5%	70.5%	78.2%	70.6%	71.0%	74.2%
	Female	72.0%	72.1%	71.8%	76.8%	75.4%	71.3%
Ethnic Origin	White	73.9%	71.7%	74.1%	75.2%	74.3%	73.5%
	Black	84.6%	45.5%	81.8%	81.3%	73.1%	54.8%
	Hispanic	60.0%	78.1%	67.2%	71.6%	70.3%	66.2%
	Asian	80.0%	69.2%	63.6%	81.3%	83.3%	83.3%
	American Indian		66.7%	66.7%	50.0%	80.0%	75.0%
	International	50.0%	50.0%	66.7%			
	Unknown			87.5%	69.2%	73.7%	100.0%
	Tuition Status	Resident Tuition	72.7%	72.0%	74.0%	75.3%	74.1%
	Non-Resident	60.9%	58.8%	71.4%	69.2%	80.0%	78.3%
	Tuition Waiver	84.2%	73.5%	64.0%	70.8%	71.4%	80.0%
Residency Status	In-State	73.1%	72.0%	73.6%	75.0%	74.1%	71.7%
	Out-of-State	72.9%	69.4%	74.1%	71.4%	73.7%	83.9%
	Out-of-US	50.0%	50.0%	66.7%	75.0%		
Ft/Pt Status	Part-Time	50.0%	50.0%		80.0%	100.0%	
	Full-Time	73.2%	71.9%	73.6%	74.8%	74.0%	72.3%

Prepared by OISP, 20 Jun 03

First-Year COLLEGE Retention Rates for First-Time In College (FTIC) Students
(Students enrolled after one year in the same college into which they entered as First-Time students)

Science

1996-2001 Cohorts Retention within College		Cohort Year - First Year Retained					
		Fall 1996 - Fall 1997	Fall 1997 - Fall 1998	Fall 1998 - Fall 1999	Fall 1999 - Fall 2000	Fall 2000 - Fall 2001	Fall 2001 - Fall 2002
		Retention	Retention	Retention	Retention	Retention	Retention
		%	%	%	%	%	%
College Total		54.1%	56.0%	53.4%	52.8%	55.0%	56.8%
Gender	Male	60.5%	60.9%	57.9%	56.1%	55.6%	59.1%
	Female	49.9%	53.6%	50.4%	51.1%	54.6%	55.7%
Ethnic Origin	White	53.6%	52.3%	52.5%	53.0%	54.5%	55.9%
	Black	43.3%	55.6%	60.0%	55.6%	71.4%	50.0%
	Hispanic	59.5%	68.9%	52.6%	41.5%	50.6%	58.3%
	Asian	61.5%	77.4%	68.8%	63.6%	65.8%	70.0%
	American Indian		33.3%			50.0%	33.3%
	International	100.0%	100.0%		100.0%		
	Unknown			66.7%	77.8%	55.6%	75.0%
Tuition Status	Resident Tuition	52.3%	53.8%	51.8%	50.7%	53.9%	56.2%
	Non-Resident	55.6%	78.6%	52.6%	50.0%	81.8%	68.8%
	Tuition Waiver	68.2%	67.9%	69.4%	71.7%	68.4%	71.4%
Residency Status	In-State	53.1%	54.7%	53.0%	52.0%	53.9%	56.2%
	Out-of-State	66.7%	69.4%	63.3%	61.9%	73.3%	69.6%
	Out-of-US	66.7%	100.0%	33.3%	69.2%		
Ft/Pt Status	Part-Time				50.0%	100.0%	50.0%
	Full-Time	54.3%	56.1%	53.4%	52.8%	54.9%	56.9%

Prepared by OISP, 20 Jun 03

First-Year COLLEGE Retention Rates for First-Time In College (FTIC) Students
(Students enrolled after one year in the same college into which they entered as First-Time students)

Veterinary Medicine

1996-2001 Cohorts Retention within College		Cohort Year - First Year Retained					
		Fall 1996 - Fall 1997	Fall 1997 - Fall 1998	Fall 1998 - Fall 1999	Fall 1999 - Fall 2000	Fall 2000 - Fall 2001	Fall 2001 - Fall 2002
		Retention	Retention	Retention	Retention	Retention	Retention
		%	%	%	%	%	%
College Total		59.2%	63.8%	62.7%	64.9%	60.5%	68.0%
Gender	Male	62.1%	61.0%	63.9%	67.5%	63.4%	80.7%
	Female	57.8%	65.3%	62.2%	63.8%	59.2%	62.5%
Ethnic Origin	White	59.9%	66.1%	62.1%	63.0%	62.5%	69.0%
	Black	72.7%	70.6%	66.7%	53.8%	46.7%	44.4%
	Hispanic	50.8%	50.7%	61.8%	77.2%	49.3%	58.8%
	Asian	60.0%	50.0%	71.0%	79.3%	64.0%	88.9%
	American Indian	50.0%	100.0%	83.3%	40.0%	33.3%	75.0%
	International			50.0%			100.0%
	Unknown			60.0%	70.0%	75.0%	75.0%
Tuition Status	Resident Tuition	59.2%	62.7%	61.0%	63.7%	59.6%	67.3%
	Non-Resident	47.1%	55.6%	62.5%	60.0%	77.8%	84.6%
	Tuition Waiver	66.7%	82.1%	88.4%	89.3%	87.5%	77.8%
Residency Status	In-State	59.4%	63.9%	62.3%	64.0%	59.6%	67.3%
	Out-of-State	56.5%	63.6%	78.9%	80.0%	80.8%	82.4%
	Out-of-US		50.0%	50.0%	88.9%		100.0%
Ft/Pt Status	Part-Time	100.0%			66.7%		
	Full-Time	59.2%	63.9%	62.8%	64.9%	60.6%	68.0%

Prepared by OISP, 20 Jun 03

First-Year COLLEGE Retention for First-Time In College (FTIC) Students
(Students enrolled after one year in the same college into which they entered as First-Time students)

All Colleges

1996-2001 Cohorts Retention within College		Cohort Year - First Year Retained											
		Fall 1996 - Fall 1997		Fall 1997 - Fall 1998		Fall 1998 - Fall 1999		Fall 1999 - Fall 2000		Fall 2000 - Fall 2001		Fall 2001 - Fall 2002	
		Cohort	Retention	Cohort	Retention	Cohort	Retention	Cohort	Retention	Cohort	Retention	Cohort	Retention
		#	#	#	#	#	#	#	#	#	#	#	
College Total		6,356	4,395	6,217	4,350	7,354	4,950	6,692	4,560	6,618	4,531	6,645	4,580
Gender	Male	3,129	2,241	3,034	2,156	3,641	2,503	3,257	2,246	3,154	2,174	3,217	2,245
	Female	3,227	2,154	3,183	2,194	3,713	2,447	3,435	2,314	3,464	2,357	3,428	2,335
Ethnic Origin	White	5,175	3,604	5,133	3,619	6,033	4,082	5,549	3,782	5,367	3,721	5,487	3,824
	Black	230	161	177	115	197	126	180	119	170	116	195	124
	Hispanic	711	448	605	404	669	419	570	377	665	390	667	420
	Asian	176	135	223	154	259	184	231	169	250	183	217	158
	American Indian	24	17	29	19	38	21	33	22	35	25	37	22
	International	40	30	50	39	60	48	46	33	10	9	5	5
	Unknown					98	70	83	58	121	87	37	27
Tuition Status	Resident Tuition	5,689	3,912	5,571	3,873	6,692	4,476	6,047	4,125	6,302	4,312	6,337	4,375
	Non-Resident	221	149	198	140	215	142	173	108	119	81	160	110
	Tuition Waiver	446	334	448	337	447	332	472	327	197	138	148	95
Residency Status	In-State	5,929	4,093	5,785	4,037	6,937	4,648	6,299	4,299	6,302	4,312	6,374	4,398
	Out-of-State	378	266	370	265	345	243	245	152	305	210	262	174
	Out-of-US	49	36	62	48	72	59	148	109	11	9	9	8
Ft/Pt Status	Part-Time	30	16	37	28	32	24	33	20	29	22	376	266
	Full-Time	6,326	4,379	6,180	4,322	7,322	4,926	6,659	4,540	6,589	4,509	6,269	4,314

Prepared by OISP, 20 Jun 03

First-Year COLLEGE Retention for First-Time In College (FTIC) Students
(Students enrolled after one year in the same college into which they entered as First-Time students)

Agriculture

1996-2001 Cohorts Retention within College		Cohort Year - First Year Retained											
		Fall 1996 - Fall 1997		Fall 1997 - Fall 1998		Fall 1998 - Fall 1999		Fall 1999 - Fall 2000		Fall 2000 - Fall 2001		Fall 2001 - Fall 2002	
		Cohort	Retention	Cohort	Retention	Cohort	Retention	Cohort	Retention	Cohort	Retention	Cohort	Retention
		#	#	#	#	#	#	#	#	#	#	#	
College Total		582	455	549	438	573	475	530	419	540	450	499	418
Gender	Male	257	202	238	202	243	209	233	188	239	198	219	188
	Female	325	253	311	236	330	266	297	231	301	252	280	230
Ethnic Origin	White	510	396	491	395	503	421	476	380	467	394	453	378
	Black	9	6	11	6	11	8	7	3	5	5	7	7
	Hispanic	48	39	32	24	36	28	24	18	39	26	27	22
	Asian	11	10	12	10	7	5	12	11	15	13	5	4
	American Indian	1	1	1	1	3	3	2	2	2	1	6	6
	International	3	3	2	2	6	4	3	3			1	1
	Unknown					7	6	6	2	12	11		
Tuition Status	Resident Tuition	503	389	470	374	508	422	462	366	511	426	474	397
	Non-Resident	15	11	13	12	14	9	8	3	6	3	9	8
	Tuition Waiver	64	55	66	52	51	44	60	50	23	21	16	13
Residency Status	In-State	543	426	500	398	537	447	497	395	511	426	476	399
	Out-of-State	35	26	47	38	31	24	25	17	28	24	21	17
	Out-of-US	4	3	2	2	5	4	8	7	1		2	2
Ft/Pt Status	Part-Time	1	1	5	5	2	2	2	2	4	4	5	4
	Full-Time	581	454	544	433	571	473	528	417	536	446	494	414

Prepared by OISP, 20 Jun 03

First-Year COLLEGE Retention for First-Time In College (FTIC) Students
(Students enrolled after one year in the same college into which they entered as First-Time students)

Architecture

1996-2001 Cohorts Retention within College		Cohort Year - First Year Retained											
		Fall 1996 - Fall 1997		Fall 1997 - Fall 1998		Fall 1998 - Fall 1999		Fall 1999 - Fall 2000		Fall 2000 - Fall 2001		Fall 2001 - Fall 2002	
		Cohort	Retention	Cohort	Retention	Cohort	Retention	Cohort	Retention	Cohort	Retention	Cohort	Retention
		#	#	#	#	#	#	#	#	#	#	#	
College Total		188	151	194	149	275	204	191	152	158	124	142	112
Gender	Male	111	87	114	88	156	111	118	99	90	72	68	51
	Female	77	64	80	61	119	93	73	53	68	52	74	61
Ethnic Origin	White	147	118	162	125	228	174	163	132	128	104	119	93
	Black	3	3	2		4	3	2	2	5	4	1	
	Hispanic	30	22	24	21	29	17	16	11	21	13	15	13
	Asian	3	3	3	2	8	6	4	2	2	2	6	5
	American Indian	2	2	1	1			1	1	1	1	1	1
	International	3	3	2		1							
	Unknown					5	4	5	4	1			
Tuition Status	Resident Tuition	172	137	179	139	257	191	179	143	155	121	140	110
	Non-Resident	7	6	5	3	7	3	6	4			2	2
	Tuition Waiver	9	8	10	7	11	10	6	5	3	3		
Residency Status	In-State	177	141	182	141	260	194	179	144	155	121	140	110
	Out-of-State	8	7	10	8	14	10	10	7	3	3	2	2
	Out-of-US	3	3	2		1		2	1				
Ft/Pt Status	Part-Time					1	1	4	1	2	1	1	1
	Full-Time	188	151	194	149	274	203	187	151	156	123	141	111

Prepared by OISP, 20 Jun 03

First-Year COLLEGE Retention for First-Time In College (FTIC) Students
(Students enrolled after one year in the same college into which they entered as First-Time students)

Business Admin

1996-2001 Cohorts Retention within College		Cohort Year - First Year Retained											
		Fall 1996 - Fall 1997		Fall 1997 - Fall 1998		Fall 1998 - Fall 1999		Fall 1999 - Fall 2000		Fall 2000 - Fall 2001		Fall 2001 - Fall 2002	
		Cohort	Retention	Cohort	Retention	Cohort	Retention	Cohort	Retention	Cohort	Retention	Cohort	Retention
		#	#	#	#	#	#	#	#	#	#	#	
College Total		862	699	968	761	1,220	992	872	742	882	766	835	722
Gender	Male	381	314	437	332	557	454	404	337	379	333	347	297
	Female	481	385	531	429	663	538	468	405	503	433	488	425
Ethnic Origin	White	708	586	833	661	1,041	858	751	647	738	645	712	623
	Black	35	28	16	13	24	17	18	14	20	16	24	20
	Hispanic	84	56	83	59	89	68	63	47	62	50	65	51
	Asian	24	20	24	18	34	25	20	16	38	33	27	24
	American Indian	2	2	8	7	5	2	4	4	10	9	1	
	International	9	7	4	3	8	8	9	8	1	1		
	Unknown					19	14	7	6	13	12	6	4
Tuition Status	Resident Tuition	796	646	905	712	1,148	933	811	697	853	744	819	709
	Non-Resident	30	22	29	21	25	17	23	17	11	8	5	5
	Tuition Waiver	36	31	34	28	47	42	38	28	18	14	11	8
Residency Status	In-State	817	664	925	731	1,176	956	832	713	853	744	822	710
	Out-of-State	32	25	39	27	35	27	21	14	28	21	13	12
	Out-of-US	13	10	4	3	9	9	19	15	1	1		
Ft/Pt Status	Part-Time	5	4	10	8	7	6	2	1	5	5		
	Full-Time	857	695	958	753	1,213	986	870	741	877	761	835	722

Prepared by OISP, 20 Jun 03

First-Year COLLEGE Retention for First-Time In College (FTIC) Students
(Students enrolled after one year in the same college into which they entered as First-Time students)

Education

1996-2001 Cohorts Retention within College		Cohort Year - First Year Retained											
		Fall 1996 - Fall 1997		Fall 1997 - Fall 1998		Fall 1998 - Fall 1999		Fall 1999 - Fall 2000		Fall 2000 - Fall 2001		Fall 2001 - Fall 2002	
		Cohort	Retention	Cohort	Retention	Cohort	Retention	Cohort	Retention	Cohort	Retention	Cohort	Retention
		#	#	#	#	#	#	#	#	#	#	#	
College Total		209	151	241	178	253	181	274	207	303	230	289	227
Gender	Male	34	23	36	17	33	17	41	29	44	31	26	19
	Female	175	128	205	161	220	164	233	178	259	199	263	208
Ethnic Origin	White	193	143	215	160	231	169	246	184	279	217	261	207
	Black			4	3	6	2	4	3	2	1	2	2
	Hispanic	16	8	19	12	11	8	16	14	12	6	19	11
	Asian			2	2	1		5	3	1		5	5
	American Indian			1	1	1	1	2	2	1	1	1	1
	International									1	1		
	Unknown					3	1	1	1	7	4	1	1
Tuition Status	Resident Tuition	196	142	227	168	239	172	261	197	295	224	281	224
	Non-Resident	4	3	5	4	5	2	5	3	3	3	7	2
	Tuition Waiver	9	6	9	6	9	7	8	7	5	3	1	1
Residency Status	In-State	204	147	232	171	245	176	269	204	295	224	281	224
	Out-of-State	4	3	9	7	8	5	4	2	7	5	8	3
	Out-of-US	1	1					1	1	1	1		
Ft/Pt Status	Part-Time	3	1			2	1			4	3	2	2
	Full-Time	206	150	241	178	251	180	274	207	299	227	287	225

Prepared by OISP, 20 Jun 03

First-Year COLLEGE Retention for First-Time In College (FTIC) Students
(Students enrolled after one year in the same college into which they entered as First-Time students)

Engineering

1996-2001 Cohorts Retention within College		Cohort Year - First Year Retained											
		Fall 1996 - Fall 1997		Fall 1997 - Fall 1998		Fall 1998 - Fall 1999		Fall 1999 - Fall 2000		Fall 2000 - Fall 2001		Fall 2001 - Fall 2002	
		Cohort	Retention	Cohort	Retention	Cohort	Retention	Cohort	Retention	Cohort	Retention	Cohort	Retention
		#	#	#	#	#	#	#	#	#	#	#	
College Total		1,454	1,082	1,427	1,071	2,060	1,388	1,724	1,143	1,510	1,009	1,417	989
Gender	Male	1,137	858	1,121	848	1,613	1,096	1,339	906	1,127	771	1,075	760
	Female	317	224	306	223	447	292	385	237	383	238	342	229
Ethnic Origin	White	1,147	846	1,139	858	1,614	1,076	1,364	896	1,147	767	1,097	773
	Black	39	30	42	30	63	41	56	37	43	27	41	30
	Hispanic	173	127	128	90	193	122	171	108	194	115	189	121
	Asian	68	57	84	64	119	94	73	59	82	66	70	50
	American Indian	8	7	4	2	10	4	13	8	6	3	11	6
	International	19	15	30	27	31	28	25	19	7	7	2	2
	Unknown					30	23	22	16	31	24	7	7
Tuition Status	Resident Tuition	1,256	925	1,201	894	1,804	1,201	1,488	988	1,414	946	1,315	923
	Non-Resident	61	48	67	54	83	65	51	35	26	17	41	30
	Tuition Waiver	137	109	159	123	173	122	185	120	70	46	61	36
Residency Status	In-State	1,320	977	1,267	944	1,887	1,255	1,579	1,043	1,414	946	1,327	929
	Out-of-State	114	89	123	94	132	98	77	48	89	56	86	56
	Out-of-US	20	16	37	33	41	35	68	52	7	7	4	4
Ft/Pt Status	Part-Time	10	4	7	6	8	8	10	7	4	3	7	6
	Full-Time	1,444	1,078	1,420	1,065	2,052	1,380	1,714	1,136	1,506	1,006	1,410	983

Prepared by OISP, 20 Jun 03

First-Year COLLEGE Retention for First-Time In College (FTIC) Students
(Students enrolled after one year in the same college into which they entered as First-Time students)

Geosciences

1996-2001 Cohorts Retention within College		Cohort Year - First Year Retained											
		Fall 1996 - Fall 1997		Fall 1997 - Fall 1998		Fall 1998 - Fall 1999		Fall 1999 - Fall 2000		Fall 2000 - Fall 2001		Fall 2001 - Fall 2002	
		Cohort	Retention	Cohort	Retention	Cohort	Retention	Cohort	Retention	Cohort	Retention	Cohort	Retention
		#	#	#	#	#	#	#	#	#	#	#	
College Total		46	27	50	33	76	32	65	43	60	32	59	32
Gender	Male	23	13	24	16	42	17	26	18	30	17	31	19
	Female	23	14	26	17	34	15	39	25	30	15	28	13
Ethnic Origin	White	43	25	47	31	70	28	58	40	54	29	55	31
	Black	1	1	2	1			2	1				
	Hispanic	1		1	1	3	2	3	1	4	2	2	1
	Asian							1				2	
	American Indian	1	1			2	1						
	International												
	Unknown					1	1	1	1	2	1		
Tuition Status	Resident Tuition	33	19	45	30	69	26	55	37	55	29	58	32
	Non-Resident	7	3	1		3	2						
	Tuition Waiver	6	5	4	3	4	4	10	6	5	3	1	
Residency Status	In-State	38	23	47	31	70	27	63	42	55	29	58	32
	Out-of-State	8	4	3	2	6	5	2	1	5	3	1	
	Out-of-US												
Ft/Pt Status	Part-Time					1	1			1			
	Full-Time	46	27	50	33	75	31	65	43	59	32	59	32

Prepared by OISP, 20 Jun 03

First-Year COLLEGE Retention for First-Time In College (FTIC) Students
(Students enrolled after one year in the same college into which they entered as First-Time students)

General Studies

1996-2001 Cohorts Retention within College		Cohort Year - First Year Retained											
		Fall 1996 - Fall 1997		Fall 1997 - Fall 1998		Fall 1998 - Fall 1999		Fall 1999 - Fall 2000		Fall 2000 - Fall 2001		Fall 2001 - Fall 2002	
		Cohort	Retention	Cohort	Retention	Cohort	Retention	Cohort	Retention	Cohort	Retention	Cohort	Retention
		#	#	#	#	#	#	#	#	#	#	#	
College Total		1,256	744	1,045	599	1,010	478	1,242	687	1,271	706	1,701	947
Gender	Male	587	355	509	298	394	202	539	307	632	363	914	529
	Female	669	389	536	301	616	276	703	380	639	343	787	418
Ethnic Origin	White	1,006	605	831	479	847	404	1,054	569	1,045	585	1,438	807
	Black	65	42	54	35	36	17	44	29	47	32	49	29
	Hispanic	160	83	124	70	87	41	88	59	117	57	153	80
	Asian	19	12	24	10	16	3	38	21	37	18	42	23
	American Indian	4	2	6	2	7	3	3	2	5	4	6	1
	International	2		6	3	6	5	6	2	1			
	Unknown					11	5	9	5	19	10	13	7
Tuition Status	Resident Tuition	1,166	697	970	556	938	444	1,157	646	1,219	679	1,630	911
	Non-Resident	39	24	38	20	37	19	49	27	34	19	44	23
	Tuition Waiver	51	23	37	23	35	15	36	14	18	8	27	13
Residency Status	In-State	1,190	708	992	570	959	451	1,184	662	1,219	679	1,640	919
	Out-of-State	64	36	45	25	43	20	42	18	51	27	60	28
	Out-of-US	2		8	4	8	7	16	7	1		1	
Ft/Pt Status	Part-Time	4	3	7	6	10	5	5	2	6	4	358	252
	Full-Time	1,252	741	1,038	593	1,000	473	1,237	685	1,265	702	1,343	695

Prepared by OISP, 20 Jun 03

First-Year COLLEGE Retention for First-Time In College (FTIC) Students
(Students enrolled after one year in the same college into which they entered as First-Time students)

Liberal Arts

1996-2001 Cohorts Retention within College		Cohort Year - First Year Retained											
		Fall 1996 - Fall 1997		Fall 1997 - Fall 1998		Fall 1998 - Fall 1999		Fall 1999 - Fall 2000		Fall 2000 - Fall 2001		Fall 2001 - Fall 2002	
		Cohort	Retention	Cohort	Retention	Cohort	Retention	Cohort	Retention	Cohort	Retention	Cohort	Retention
		#	#	#	#	#	#	#	#	#	#	#	#
College Total		541	395	611	438	632	465	692	518	729	540	727	525
Gender	Male	155	117	173	122	174	136	214	151	217	154	221	164
	Female	386	278	438	316	458	329	478	367	512	386	506	361
Ethnic Origin	White	448	331	516	370	518	384	577	434	603	448	604	444
	Black	26	22	11	5	22	18	16	13	26	19	31	17
	Hispanic	55	33	64	50	67	45	67	48	64	45	74	49
	Asian	10	8	13	9	11	7	16	13	12	10	12	10
	American Indian			3	2	3	2	2	1	5	4	4	3
	International	2	1	4	2	3	2	1					
	Unknown					8	7	13	9	19	14	2	2
Tuition Status	Resident Tuition	480	349	560	403	593	439	631	475	691	512	689	495
	Non-Resident	23	14	17	10	14	10	13	9	10	8	23	18
	Tuition Waiver	38	32	34	25	25	16	48	34	28	20	15	12
Residency Status	In-State	491	359	571	411	602	443	652	489	691	512	696	499
	Out-of-State	48	35	36	25	27	20	28	20	38	28	31	26
	Out-of-US	2	1	4	2	3	2	12	9				
Ft/Pt Status	Part-Time	4	2	6	3			5	4	1	1	1	
	Full-Time	537	393	605	435	632	465	687	514	728	539	726	525

Prepared by OISP, 20 Jun 03

First-Year COLLEGE Retention for First-Time In College (FTIC) Students
(Students enrolled after one year in the same college into which they entered as First-Time students)

Science

1996-2001 Cohorts Retention within College		Cohort Year - First Year Retained											
		Fall 1996 - Fall 1997		Fall 1997 - Fall 1998		Fall 1998 - Fall 1999		Fall 1999 - Fall 2000		Fall 2000 - Fall 2001		Fall 2001 - Fall 2002	
		Cohort	Retention	Cohort	Retention	Cohort	Retention	Cohort	Retention	Cohort	Retention	Cohort	Retention
		#	#	#	#	#	#	#	#	#	#	#	#
College Total		595	322	507	284	558	298	544	287	562	309	498	283
Gender	Male	238	144	169	103	221	128	180	101	205	114	171	101
	Female	357	178	338	181	337	170	364	186	357	195	327	182
Ethnic Origin	White	457	245	392	205	425	223	417	221	429	234	367	205
	Black	30	13	18	10	10	6	18	10	7	5	22	11
	Hispanic	79	47	61	42	78	41	65	27	77	39	72	42
	Asian	26	16	31	24	32	22	33	21	38	25	30	21
	American Indian	2		3	1	1		1		2	1	3	1
	International	1	1	2	2	3		1	1				
	Unknown					9	6	9	7	9	5	4	3
Tuition Status	Resident Tuition	511	267	437	235	490	254	483	245	532	287	475	267
	Non-Resident	18	10	14	11	19	10	8	4	11	9	16	11
	Tuition Waiver	66	45	56	38	49	34	53	38	19	13	7	5
Residency Status	In-State	550	292	468	256	525	278	510	265	532	287	475	267
	Out-of-State	42	28	36	25	30	19	21	13	30	22	23	16
	Out-of-US	3	2	3	3	3	1	13	9				
Ft/Pt Status	Part-Time	2		1				2	1	1	1	2	1
	Full-Time	593	322	506	284	558	298	542	286	561	308	496	282

Prepared by OISP, 20 Jun 03

First-Year COLLEGE Retention for First-Time In College (FTIC) Students
(Students enrolled after one year in the same college into which they entered as First-Time students)

Veterinary Medicine

1996-2001 Cohorts Retention within College		Cohort Year - First Year Retained											
		Fall 1996 - Fall 1997		Fall 1997 - Fall 1998		Fall 1998 - Fall 1999		Fall 1999 - Fall 2000		Fall 2000 - Fall 2001		Fall 2001 - Fall 2002	
		Cohort	Retention	Cohort	Retention	Cohort	Retention	Cohort	Retention	Cohort	Retention	Cohort	Retention
		#	#	#	#	#	#	#	#	#	#	#	
College Total		623	369	625	399	697	437	558	362	603	365	478	325
Gender	Male	206	128	213	130	208	133	163	110	191	121	145	117
	Female	417	241	412	269	489	304	395	252	412	244	333	208
Ethnic Origin	White	516	309	507	335	556	345	443	279	477	298	381	263
	Black	22	16	17	12	21	14	13	7	15	7	18	8
	Hispanic	65	33	69	35	76	47	57	44	75	37	51	30
	Asian	15	9	30	15	31	22	29	23	25	16	18	16
	American Indian	4	2	2	2	6	5	5	2	3	1	4	3
	International	1				2	1	1				2	2
	Unknown					5	3	10	7	8	6	4	3
Tuition Status	Resident Tuition	576	341	577	362	646	394	520	331	577	344	456	307
	Non-Resident	17	8	9	5	8	5	10	6	18	14	13	11
	Tuition Waiver	30	20	39	32	43	38	28	25	8	7	9	7
Residency Status	In-State	599	356	601	384	676	421	534	342	577	344	459	309
	Out-of-State	23	13	22	14	19	15	15	12	26	21	17	14
	Out-of-US	1		2	1	2	1	9	8			2	2
Ft/Pt Status	Part-Time	1	1	1		1		3	2	1			
	Full-Time	622	368	624	399	696	437	555	360	602	365	478	325

Prepared by OISP, 20 Jun 03

Six-Year DEPARTMENT Graduation Rates for First-Time In College (FTIC) Students
(Students graduating within six years from the same department into which they entered as First-Time students)

Graduation within Department		Cohort Year - Graduation Year								
		Fall 1994 - Fall 2000			Fall 1995 - Fall 2001			Fall 1996 - Fall 1997		
		Cohort	Graduation	Graduation	Cohort	Graduation	Graduation	Cohort	Graduation	Graduation
		#	#	%	#	#	%	#	#	%
All Departments		5,995	1,610	26.9%	6,029	1,883	31.2%	6,356	2,065	32.5%
Agriculture										
	AGEC	52	31	59.6%	38	17	44.7%	60	38	63.3%
	AGED	33	16	48.5%	44	24	54.5%	48	26	54.2%
	ANSC	124	57	46.0%	142	64	45.1%	156	60	38.5%
	BAEN	41	16	39.0%	45	18	40.0%	42	15	35.7%
	BCBP	139	41	29.5%	150	34	22.7%	179	24	13.4%
	CLAG	16			23			1		
	ENTO	1			2	2	100.0%	8	5	62.5%
	FRSC	5	1	20.0%	3	1	33.3%	4		
	HRSC	8	6	75.0%	11	7	63.6%	6	6	100.0%
	PLPM	38	13	34.2%	31	6	19.4%	24	12	50.0%
	POSC	6	3	50.0%	5	4	80.0%	16	7	43.8%
	RLEM	7	2	28.6%	8	6	75.0%	2	2	100.0%
	RPTS	1	1	100.0%	3	2	66.7%	5	2	40.0%
	SCSC	2	1	50.0%	1	1	100.0%	8	6	75.0%
	WFSC	33	18	54.5%	27	11	40.7%	23	9	39.1%
Architecture										
	ARCH	88	45	51.1%	129	72	55.8%	127	73	57.5%
	COSC	37	13	35.1%	36	18	50.0%	43	21	48.8%
	LAUP	13	2	15.4%	20	5	25.0%	18	4	22.2%
Business Admin										
	CLBA	799	444	55.6%	759	451	59.4%	862	547	63.5%
Education										
	HLKN	54	22	40.7%	55	34	61.8%	87	43	49.4%
	TLAC	112	70	62.5%	135	90	66.7%	122	69	56.6%
Engineering										
	AERO	77	14	18.2%	79	21	26.6%	82	22	26.8%
	CHEN	265	68	25.7%	190	63	33.2%	186	64	34.4%
	CPSC	215	60	27.9%	224	72	32.1%	303	95	31.4%
	CVEN	195	43	22.1%	169	56	33.1%	163	57	35.0%
	ELEN	233	60	25.8%	252	72	28.6%	219	73	33.3%
	ETID	16	8	50.0%	17	11	64.7%	22	13	59.1%
	INEN	168	36	21.4%	153	47	30.7%	157	44	28.0%
	MEEN	237	88	37.1%	247	82	33.2%	274	100	36.5%
	NUEN	20	3	15.0%	15	4	26.7%	12	1	8.3%
	PETE	69	17	24.6%	40	13	32.5%	36	11	30.6%
Geosciences										
	ATMO	27	9	33.3%	25	5	20.0%	25	5	20.0%
	CLGE				9	1	11.1%	1		
	GEOG	5	2	40.0%	8	6	75.0%	9	7	77.8%
	GEPL	9	5	55.6%	8	2	25.0%	11	6	54.5%
General Studies										
	GEST	1,206			1,251			1,256		

Six-Year DEPARTMENT Graduation Rates for First-Time In College (FTIC) Students
(Students graduating within six years from the same department into which they entered as First-Time students)

Graduation within Department		Cohort Year - Graduation Year								
		Fall 1994 - Fall 2000			Fall 1995 - Fall 2001			Fall 1996 - Fall 1997		
		Cohort	Graduation	Graduation	Cohort	Graduation	Graduation	Cohort	Graduation	Graduation
		#	#	%	#	#	%	#	#	%
Liberal Arts	ANTH	10	1	10.0%	5	3	60.0%	10	3	30.0%
	CLLA	41	19	46.3%	31	11	35.5%	30	16	53.3%
	COMM	31	12	38.7%	36	15	41.7%	28	11	39.3%
	ECON	13	4	30.8%	9	3	33.3%	9	4	44.4%
	ENGL	65	33	50.8%	55	29	52.7%	54	29	53.7%
	HIST	36	19	52.8%	26	12	46.2%	32	13	40.6%
	JOUR	61	19	31.1%	54	22	40.7%	55	20	36.4%
	MODL	8	2	25.0%	9	5	55.6%	6	2	33.3%
	PHUM	3	1	33.3%	1	1	100.0%	3		
	POLS	91	27	29.7%	100	40	40.0%	115	48	41.7%
	PSYC	146	61	41.8%	122	52	42.6%	189	85	45.0%
SOCI	12	2	16.7%	14	7	50.0%	10	1	10.0%	
Science	BIOL	507	91	17.9%	458	115	25.1%	452	103	22.8%
	CHEM	55	12	21.8%	67	14	20.9%	54	19	35.2%
	MATH	58	14	24.1%	47	19	40.4%	59	27	45.8%
	PHYS	34	6	17.6%	38	5	13.2%	30	7	23.3%
Veterinary Medicine	CLVM	473	72	15.2%	603	208	34.5%	623	210	33.7%

Prepared by OISP, 19 Jun 03

First-Year DEPARTMENT Retention Rates for First-Time In College (FTIC) Students
(Students enrolled after one year in the same department into which they entered as First-Time students)

1996-2001 Cohorts Retention within Department		Cohort Year - First Year Retained					
		Fall 1996 - Fall 1997	Fall 1997 - Fall 1998	Fall 1998 - Fall 1999	Fall 1999 - Fall 2000	Fall 2000 - Fall 2001	Fall 2001 - Fall 2002
		Retention	Retention	Retention	Retention	Retention	Retention
		%	%	%	%	%	%
All Departments		66.0%	66.6%	63.2%	64.5%	64.8%	64.3%
Agriculture	AGEC	75.0%	64.9%	68.7%	70.1%	76.8%	61.5%
	AGED	79.2%	79.2%	71.7%	85.7%	90.4%	88.9%
	ANSC	74.4%	72.1%	75.8%	69.7%	76.6%	76.1%
	BAEN	57.1%	64.7%	65.5%	71.4%	55.9%	64.9%
	BCBP	62.0%	63.7%	65.0%	58.6%	66.0%	68.4%
	CLAG			33.3%	63.6%	37.5%	
	ENTO	87.5%	83.3%	75.0%		100.0%	100.0%
	FRSC	50.0%	100.0%	66.7%	71.4%	71.4%	100.0%
	HRSC	100.0%	100.0%	100.0%	100.0%	71.4%	83.3%
	PLPM	70.8%	78.9%	53.3%	70.0%	63.6%	85.7%
	POSC	93.8%	83.3%	75.0%	100.0%	72.7%	50.0%
	RLEM	100.0%	80.0%	50.0%	100.0%	100.0%	83.3%
	RPTS	80.0%	66.7%	85.7%	100.0%	71.4%	70.0%
	SCSC	75.0%	85.7%	83.3%	88.9%	80.0%	87.5%
	WFSC	56.5%	70.8%	81.0%	77.1%	75.6%	65.4%
Architecture	ARCH	78.0%	68.9%	72.7%	78.2%	80.4%	76.8%
	COSC	65.1%	69.1%	59.7%	62.7%	71.4%	76.5%
	LAUP	66.7%	58.8%	60.0%	72.7%	78.6%	55.6%
Business Admin	CLBA	81.1%	78.6%	81.3%	85.1%	86.8%	86.5%
Education	EAHR						
	HLKN	64.4%	65.6%	65.2%	70.9%	66.9%	75.7%
	TLAC	77.0%	77.5%	73.8%	77.6%	80.1%	78.0%
Engineering	AERO	65.9%	65.3%	53.2%	52.9%	47.5%	47.6%
	CHEN	67.7%	73.4%	66.1%	67.1%	67.6%	71.4%
	CLEN			40.0%	52.8%	44.2%	48.2%
	CPSC	64.0%	72.9%	56.3%	55.8%	63.4%	69.8%
	CVEN	57.1%	60.1%	50.5%	62.8%	52.1%	63.0%
	ELEN	70.3%	67.7%	62.3%	64.0%	61.6%	63.7%
	ETID	77.3%	80.8%	86.3%	67.3%	78.0%	66.7%
	INEN	70.1%	59.2%	53.1%	53.6%	50.4%	18.8%
	MEEN	75.5%	72.5%	67.3%	58.1%	62.1%	63.3%
	NUEN	25.0%	76.9%	57.1%	59.1%	53.6%	57.7%
	PETE	55.6%	54.2%	65.8%	48.9%	60.0%	57.6%
Geosciences	ATMO	36.0%	48.4%	42.9%	60.5%	42.1%	41.5%
	CLGE						
	GEOG	100.0%	100.0%	20.0%	100.0%	75.0%	100.0%
	GEPL	72.7%	82.4%	27.3%	68.4%	66.7%	62.5%
General Studies	GEST	59.2%	57.3%	47.3%	55.3%	55.5%	55.7%

First-Year DEPARTMENT Retention Rates for First-Time In College (FTIC) Students
(Students enrolled after one year in the same department into which they entered as First-Time students)

1996-2001 Cohorts Retention within Department		Cohort Year - First Year Retained					
		Fall 1996 - Fall 1997	Fall 1997 - Fall 1998	Fall 1998 - Fall 1999	Fall 1999 - Fall 2000	Fall 2000 - Fall 2001	Fall 2001 - Fall 2002
		Retention	Retention	Retention	Retention	Retention	Retention
		%	%	%	%	%	%
Liberal Arts	ANTH	60.0%	33.3%	40.0%	66.7%	62.5%	50.0%
	CLLA	80.0%	66.7%	79.2%	75.6%	81.3%	71.0%
	COMM	71.4%	68.0%	54.7%	70.7%	78.8%	71.1%
	ECON	77.8%	66.7%	35.7%	41.2%	82.4%	63.2%
	ENGL	77.8%	62.1%	73.9%	78.3%	70.0%	78.4%
	HIST	71.9%	54.3%	70.0%	76.5%	81.4%	62.2%
	JOUR	60.0%	59.7%	69.3%	71.6%	55.4%	47.5%
	MODL	66.7%	66.7%	66.7%	50.0%	58.3%	66.7%
	PHUM		66.7%	50.0%	50.0%	50.0%	75.0%
	POLS	72.2%	67.7%	65.0%	63.6%	62.5%	69.2%
	PRFM				70.0%	80.0%	66.7%
	PSYC	64.6%	67.2%	64.7%	64.4%	64.8%	62.9%
SOCI	30.0%	69.2%	68.4%	40.0%	66.7%	57.1%	
Science	BIOL	49.3%	54.2%	50.4%	51.3%	54.8%	55.9%
	CHEM	57.4%	59.6%	50.0%	58.7%	40.4%	64.0%
	MATH	79.7%	60.3%	75.0%	55.4%	55.8%	55.4%
	PHYS	53.3%	50.0%	40.0%	42.1%	53.6%	32.0%
Veterinary Medicine	CLVM	59.2%	63.8%	62.7%	64.9%	60.5%	68.0%

Prepared by OISP, 19 Jun 03

First-Year DEPARTMENT Retention for First-Time In College (FTIC) Students
(Students enrolled after one year in the same department into which they entered as First-Time students)

1996-2001 Cohorts Retention within Department		Cohort Year - First Year Retained											
		Fall 1996 - Fall 1997		Fall 1997 - Fall 1998		Fall 1998 - Fall 1999		Fall 1999 - Fall 2000		Fall 2000 - Fall 2001		Fall 2001 - Fall 2002	
		Cohort	Retention	Cohort	Retention	Cohort	Retention	Cohort	Retention	Cohort	Retention	Cohort	Retention
		#	#	#	#	#	#	#	#	#	#	#	
All Departments		6,356	4,195	6,217	4,139	7,354	4,648	6,692	4,316	6,618	4,288	6,645	4,272
Agriculture	AGEC	60	45	74	48	67	46	77	54	82	63	104	64
	AGED	48	38	48	38	53	38	42	36	52	47	45	40
	ANSC	156	116	165	119	186	141	145	101	167	128	142	108
	BAEN	42	24	34	22	58	38	49	35	34	19	37	24
	BCBP	179	111	135	86	123	80	111	65	103	68	79	54
	CLAG	1		1		6	2	11	7	8	3	10	
	ENTO	8	7	6	5	4	3	2		1	1	3	3
	FRSC	4	2	1	1	3	2	7	5	7	5	1	1
	HRSC	6	6	3	3	8	8	10	10	7	5	6	5
	PLPM	24	17	19	15	15	8	10	7	11	7	14	12
	POSC	16	15	18	15	12	9	7	7	11	8	8	4
	RLEM	2	2	5	4	4	2	7	7	4	4	6	5
	RPTS	5	4	9	6	7	6	8	8	7	5	10	7
SCSC	8	6	7	6	6	5	9	8	5	4	8	7	
WFSC	23	13	24	17	21	17	35	27	41	31	26	17	
Architecture	ARCH	127	99	122	84	198	144	110	86	102	82	99	76
	COSC	43	28	55	38	62	37	59	37	42	30	34	26
	LAUP	18	12	17	10	15	9	22	16	14	11	9	5
Business Admin	CLBA	862	699	968	761	1,220	992	872	742	882	766	835	722
	EAHR							1		1			
	HLKN	87	56	90	59	89	58	103	73	121	81	103	78
Engineering	TLAC	122	94	151	117	164	121	170	132	181	145	186	145
	AERO	82	54	95	62	154	82	140	74	160	76	208	99
	CHEN	186	126	173	127	227	150	155	104	136	92	105	75
	CLEN					20	8	72	38	95	42	112	54
	CPSC	303	194	299	218	448	252	391	218	273	173	242	169
	CVEN	163	93	163	98	206	104	148	93	140	73	127	80
	ELEN	219	154	223	151	318	198	264	169	232	143	223	142
	ETID	22	17	26	21	51	44	55	37	50	39	33	22
	INEN	157	110	142	84	179	95	151	81	139	70	101	19
	MEEN	274	207	269	195	370	249	279	162	227	141	207	131
	NUEN	12	3	13	10	14	8	22	13	28	15	26	15
	PETE	36	20	24	13	73	48	47	23	30	18	33	19
	Geosciences	ATMO	25	9	31	15	49	21	43	26	38	16	41
CLGE		1											
GEOG		9	9	2	2	5	1	3	3	4	3	2	2
General Studies	GEPL	11	8	17	14	22	6	19	13	18	12	16	10
	GEST	1,256	744	1,045	599	1,010	478	1,242	687	1,271	706	1,701	947

Prepared by OISP, 19 Jun 03

First-Year DEPARTMENT Retention for First-Time In College (FTIC) Students
(Students enrolled after one year in the same department into which they entered as First-Time students)

1996-2001 Cohorts Retention within Department		Cohort Year - First Year Retained											
		Fall 1996 - Fall 1997		Fall 1997 - Fall 1998		Fall 1998 - Fall 1999		Fall 1999 - Fall 2000		Fall 2000 - Fall 2001		Fall 2001 - Fall 2002	
		Cohort	Retention	Cohort	Retention	Cohort	Retention	Cohort	Retention	Cohort	Retention	Cohort	Retention
		#	#	#	#	#	#	#	#	#	#	#	#
Liberal Arts	ANTH	10	6	6	2	10	4	15	10	16	10	10	5
	CLLA	30	24	30	20	24	19	41	31	32	26	31	22
	COMM	28	20	50	34	75	41	58	41	85	67	83	59
	ECON	9	7	15	10	14	5	17	7	17	14	19	12
	ENGL	54	42	58	36	46	34	69	54	50	35	51	40
	HIST	32	23	46	25	30	21	34	26	59	48	45	28
	JOUR	55	33	62	37	88	61	116	83	112	62	99	47
	MODL	6	4	9	6	6	4	12	6	12	7	9	6
	PHUM	3		6	4	2	1	4	2	6	3	8	6
	POLS	115	83	133	90	117	76	129	82	104	65	143	99
	PRFM							10	7	5	4	3	2
	PSYC	189	122	183	123	201	130	177	114	216	140	205	129
	SOCI	10	3	13	9	19	13	10	4	15	10	21	12
Science	BIOL	452	223	382	207	427	215	423	217	400	219	358	200
	CHEM	54	31	52	31	50	25	46	27	57	23	50	32
	MATH	59	47	63	38	56	42	56	31	77	43	65	36
	PHYS	30	16	10	5	25	10	19	8	28	15	25	8
Veterinary Medicine	CLVM	623	369	625	399	697	437	558	362	603	365	478	325

Prepared by OISP, 19 Jun 03

Six-Year MAJOR Graduation Rates for First-Time In College (FTIC) Students
(Students graduating within six years with the same major that they chose as First-Time students)

Graduation within Major		Cohort Year - Graduation Year								
		1994 - 2000			1995 - 2001			1996 - 2002		
		Cohort	Graduation	Graduation	Cohort	Graduation	Graduation	Cohort	Graduation	Graduation
		#	#	%	#	#	%	#	#	%
All Majors		5,995	1,506	25.1%	6,029	1,829	30.3%	6,356	2,003	31.5%
Agriculture	ADEV	23	11	47.8%	36	21	58.3%	30	17	56.7%
	AGBU	46	20	39.2%	36	15	38.5%	41	19	41.3%
	AGEC	15	8	53.3%	19	10	52.6%	19	9	47.4%
	AGEN	37	9	24.3%	37	10	27.0%	34	8	23.5%
	AGJR	2			6	1	16.7%	6	2	33.3%
	AGLS	5			5			1		
	AGRO	2			1	1	100.0%	7	5	71.4%
	AGSC	8	2	25.0%	2			12	3	25.0%
	AGSM	4	1	25.0%	8	4	50.0%	8	2	25.0%
	ANSC	88	43	48.9%	106	47	44.3%	125	48	38.4%
	BESC	38	13	34.2%	31	6	19.4%	24	12	50.0%
	BICH	78	12	15.4%	71	16	22.5%	96	26	27.1%
	DASC	2	1	50.0%	3	2	66.7%	5	3	60.0%
	ENTO	1			2	2	100.0%	8	5	62.5%
	FLOR				1	1	100.0%	1		
	FORS	5	1	20.0%	3	1	33.3%	4		
	FSTC	7	4	57.1%	9	3	33.3%	3	3	100.0%
	GENE	61	25	41.0%	79	26	32.9%	83	26	31.3%
	HORT	8	6	75.0%	10	6	60.0%	5	5	100.0%
	NUSC	28	8	28.6%	24	7	29.2%	23	3	13.0%
POSC	6	3	50.0%	5	4	80.0%	16	7	43.8%	
PSSC	1	1	100.0%	1			1			
RLEM	7	2	28.6%	8	6	75.0%	2	2	100.0%	
RPTS	1	1	100.0%	3	2	66.7%	5	2	40.0%	
WFSC	33	18	54.5%	27	11	40.7%	23	9	39.1%	
Architecture	COSC	37	13	35.1%	36	18	50.0%	43	21	48.8%
	ENDS	88	45	51.1%	129	72	55.8%	127	73	57.5%
	LAND	13	2	15.4%	20	5	25.0%	18	4	22.2%
Business Admin	AGBU	5	2	3.9%	3			5	1	2.2%
	BUAD	794	421	53.0%	756	449	59.4%	857	542	63.2%
Education	HLTH	10	4	40.0%	10	5	50.0%	14	8	57.1%
	INST	112	70	62.5%	135	90	66.7%	122	69	56.6%
	KINE	44	16	36.4%	45	24	53.3%	73	32	43.8%

Prepared by OISP, 19 Jun 03

Six-Year MAJOR Graduation Rates for First-Time In College (FTIC) Students
(Students graduating within six years with the same major that they chose as First-Time students)

Graduation within Major		Cohort Year - Graduation Year								
		1994 - 2000			1995 - 2001			1996 - 2002		
		Cohort	Graduation	Graduation	Cohort	Graduation	Graduation	Cohort	Graduation	Graduation
		#	#	%	#	#	%	#	#	%
Engineering	AERO	77	14	18.2%	79	21	26.6%	82	22	26.8%
	BMEN	136	22	16.2%	117	35	29.9%	129	29	22.5%
	CHEN	265	68	25.7%	190	63	33.2%	186	64	34.4%
	CPEN	151	37	24.5%	192	55	28.6%	223	59	26.5%
	CPSC	102	21	20.6%	101	24	23.8%	151	44	29.1%
	CVEN	181	40	22.1%	159	49	30.8%	154	56	36.4%
	ELEN	195	47	24.1%	183	53	29.0%	148	54	36.5%
	ENTC	5			8	2	25.0%	11	5	45.5%
	IDIS	11	8	72.7%	9	8	88.9%	11	6	54.5%
	INEN	32	9	28.1%	36	7	19.4%	28	7	25.0%
	MEEN	237	88	37.1%	247	82	33.2%	274	100	36.5%
	NUEN	18	2	11.1%	13	3	23.1%	8	1	12.5%
	OCEN	14	3	21.4%	10	5	50.0%	9	1	11.1%
	PETE	69	17	24.6%	40	13	32.5%	36	11	30.6%
	RHEN	2			2	1	50.0%	4		
Geosciences	ESCI	1	1	100.0%	1			1		
	GEOG	5	2	40.0%	8	6	75.0%	9	7	77.8%
	GEOL	6	2	33.3%	4			6	4	66.7%
	GEOP	2	1	50.0%	3	1	33.3%	4	1	25.0%
	MARB				9	1	11.1%	1		
	METR	27	9	33.3%	25	5	20.0%	25	5	20.0%
General Studies	GEST	1,206			913			982		
	GSEN				338			274		
Liberal Arts	ANTH	10	1	10.0%	5	3	60.0%	10	3	30.0%
	ECON	13	4	30.8%	9	3	33.3%	9	4	44.4%
	ENGL	65	33	50.8%	55	29	52.7%	54	29	53.7%
	FREN							1		
	HIST	36	19	52.8%	26	12	46.2%	32	13	40.6%
	INTS	41	19	46.3%	31	11	35.5%	30	16	53.3%
	JOUR	61	19	31.1%	54	22	40.7%	55	20	36.4%
	MODL	7			8			5		
	PHIL	3	1	33.3%	1	1	100.0%	3		
	POLS	91	26	28.6%	100	40	40.0%	115	48	41.7%
	PSYC	146	61	41.8%	122	52	42.6%	189	85	45.0%
	SCOM	22	8	36.4%	30	15	50.0%	22	11	50.0%
	SOCI	12	2	16.7%	14	7	50.0%	10	1	10.0%
	SPAN	1			1	1	100.0%			
THAR	9	4	44.4%	6			6	4	66.7%	

**Six-Year MAJOR Graduation Rates for First-Time In College (FTIC) Students
(Students graduating within six years with the same major that they chose as First-Time students)**

Graduation within Major		Cohort Year - Graduation Year								
		1994 - 2000			1995 - 2001			1996 - 2002		
		Cohort	Graduation	Graduation	Cohort	Graduation	Graduation	Cohort	Graduation	Graduation
		#	#	%	#	#	%	#	#	%
Science	APMS	10	4	40.0%	7	3	42.9%	11	5	45.5%
	BIOL	318	36	11.3%	295	60	20.3%	313	61	19.5%
	BMCB	23	6	26.1%	30	7	23.3%	21	5	23.8%
	BOTN	2			3	1	33.3%	2		
	CHEM	55	12	21.8%	67	14	20.9%	54	19	35.2%
	MATH	48	6	12.5%	40	11	27.5%	48	11	22.9%
	MBIO	27	5	18.5%	56	17	30.4%	53	9	17.0%
	PHYS	34	6	17.6%	38	5	13.2%	30	7	23.3%
	PMED	1			2					
	ZOOL	136	18	13.2%	72	10	13.9%	63	2	3.2%
Veterinary Medicine	BIMS	473	63	13.3%	603	206	34.2%	623	208	33.4%

Prepared by OISP, 19 Jun 03

**First-Year MAJOR Retention Rates for First-Time In College (FTIC) Students
(Students enrolled after one year in the same major which they declared as First-Time students)**

1996-2001 Cohorts Retention within Major		Cohort Year - First Year Retained					
		Fall 1996 - Fall 1997	Fall 1997 - Fall 1998	Fall 1998 - Fall 1999	Fall 1999 - Fall 2000	Fall 2000 - Fall 2001	Fall 2001 - Fall 2002
		Retention	Retention	Retention	Retention	Retention	Retention
		%	%	%	%	%	%
All Majors		64.7%	65.3%	62.5%	63.8%	64.1%	64.2%
Agriculture	ADEV	66.7%	78.4%	80.5%	87.5%	90.3%	86.1%
	AGBU	67.4%	61.8%	55.7%	66.2%	67.1%	53.3%
	AGEC	52.6%	66.7%	75.0%	58.8%	75.0%	61.1%
	AGED						
	AGEN	47.1%	45.5%	41.2%	55.3%	37.5%	28.6%
	AGJR	83.3%	85.7%	66.7%	100.0%	66.7%	16.7%
	AGLS			40.0%	50.0%	25.0%	
	AGRO	71.4%	60.0%	75.0%	77.8%	75.0%	87.5%
	AGSC	83.3%	50.0%	60.0%	70.0%	90.5%	100.0%
	AGSM	37.5%		100.0%	57.1%	75.0%	50.0%
	ANSC	74.4%	76.0%	79.6%	77.4%	77.0%	80.0%
	BESC	70.8%	78.9%	53.3%	70.0%	63.6%	85.7%
	BICH	55.2%	62.9%	58.8%	50.8%	56.9%	65.9%
	BSEN				75.0%		80.0%
	DASC	80.0%	100.0%	100.0%	100.0%	66.7%	
	ENTO	87.5%	83.3%	75.0%		100.0%	100.0%
	FLOR	100.0%	100.0%	100.0%			100.0%
	FORS	50.0%	100.0%	66.7%	71.4%	71.4%	100.0%
	FSTC	100.0%	100.0%	50.0%	57.1%	83.3%	83.3%
	GENE	65.1%	63.1%	69.1%	64.0%	66.7%	65.8%
	HORT	100.0%	100.0%	100.0%	100.0%	71.4%	75.0%
	NUSC	60.9%	48.4%	59.5%	38.7%	73.3%	57.7%
	POSC	93.8%	83.3%	75.0%	100.0%	72.7%	50.0%
PSSC	100.0%	100.0%	50.0%				
RENR			100.0%	50.0%	100.0%	100.0%	
RLEM	100.0%	80.0%	50.0%	100.0%	100.0%	80.0%	
RPTS	80.0%	66.7%	85.7%	100.0%	71.4%	70.0%	
WFSC	56.5%	70.8%	76.2%	77.1%	75.6%	65.4%	
Architecture	COSC	65.1%	69.1%	59.7%	62.7%	71.4%	76.5%
	ENDS	78.0%	68.9%	72.7%	78.2%	80.4%	76.8%
	LAND	66.7%	58.8%	60.0%	72.7%	78.6%	55.6%
Business Admin	AGBU	4.3%	3.6%	4.9%	4.6%	2.6%	3.3%
	BUAD	80.7%	78.6%	81.3%	85.2%	86.8%	86.4%
Education	HLTH	85.7%	71.4%	66.7%	90.9%	73.3%	25.0%
	IDTC						
	INST	77.0%	77.5%	73.8%	77.6%	80.1%	78.0%
	KINE	57.5%	60.2%	63.4%	67.4%	63.2%	76.8%

**First-Year MAJOR Retention Rates for First-Time In College (FTIC) Students
(Students enrolled after one year in the same major which they declared as First-Time students)**

1996-2001 Cohorts Retention within Major		Cohort Year - First Year Retained					
		Fall 1996 - Fall 1997	Fall 1997 - Fall 1998	Fall 1998 - Fall 1999	Fall 1999 - Fall 2000	Fall 2000 - Fall 2001	Fall 2001 - Fall 2002
		Retention	Retention	Retention	Retention	Retention	Retention
		%	%	%	%	%	%
Engineering	AERO	65.9%	65.3%	53.2%	52.9%	47.5%	47.6%
	BMEN	69.0%	57.7%	51.1%	49.6%	46.7%	54.1%
	CHEN	67.7%	73.4%	66.1%	67.1%	67.6%	71.4%
	CPEN	62.8%	63.4%	52.5%	60.2%	62.3%	65.6%
	CPSC	59.6%	70.2%	53.2%	51.7%	60.3%	67.4%
	CVEN	59.1%	61.5%	51.3%	63.1%	51.9%	62.3%
	ELEN	72.3%	66.7%	66.4%	64.1%	58.5%	61.5%
	ENTC	72.7%	60.0%	83.3%	45.5%	63.6%	50.0%
	IDIS	72.7%	93.8%	87.9%	78.8%	89.3%	92.3%
	INEN	67.9%	58.1%	54.5%	59.4%	59.4%	70.4%
	MEEN	75.5%	72.5%	67.3%	58.1%	62.1%	63.3%
	NUEN	25.0%	81.8%	72.7%	66.7%	52.2%	52.0%
	OCEN	22.2%	28.6%	40.0%	57.1%	54.5%	80.0%
	PETE	55.6%	54.2%	65.8%	48.9%	60.0%	57.6%
PREN			40.0%	52.8%	44.2%	48.2%	
RHEN	25.0%	50.0%		25.0%	60.0%	100.0%	
Geosciences	ESCI		33.3%		33.3%	50.0%	
	GEOG	100.0%	100.0%	20.0%	100.0%	75.0%	100.0%
	GEOL	83.3%	75.0%	23.5%	66.7%	61.5%	63.6%
	GEOP	75.0%	83.3%	50.0%	50.0%	100.0%	75.0%
	MARB						
General Studies	METR	36.0%	48.4%	42.9%	60.5%	42.1%	41.5%
	GEST	60.7%	59.4%	47.3%	55.3%	55.5%	51.7%
	GSEN	45.6%	44.3%				
	TEAM						70.0%

Prepared by OISP, 19 Jun 03

**First-Year MAJOR Retention Rates for First-Time In College (FTIC) Students
(Students enrolled after one year in the same major which they declared as First-Time students)**

1996-2001 Cohorts Retention within Major		Cohort Year - First Year Retained					
		Fall 1996 - Fall 1997	Fall 1997 - Fall 1998	Fall 1998 - Fall 1999	Fall 1999 - Fall 2000	Fall 2000 - Fall 2001	Fall 2001 - Fall 2002
		Retention	Retention	Retention	Retention	Retention	Retention
		%	%	%	%	%	%
Liberal Arts	ANTH	60.0%	33.3%	40.0%	66.7%	62.5%	50.0%
	ECON	77.8%	66.7%	35.7%	41.2%	82.4%	63.2%
	ENGL	77.8%	62.1%	73.9%	78.3%	70.0%	78.4%
	FREN					50.0%	50.0%
	GERM					100.0%	100.0%
	HIST	71.9%	54.3%	70.0%	76.5%	81.4%	62.2%
	INTS	80.0%	66.7%	79.2%	75.6%	81.3%	71.0%
	JOUR	60.0%	59.7%	69.3%	71.6%	55.4%	47.4%
	MODL		37.5%	75.0%			
	MUSC						66.7%
	PHIL		66.7%	50.0%	50.0%	50.0%	75.0%
	POLS	72.2%	67.7%	65.0%	63.6%	62.5%	69.2%
	PSYC	64.6%	67.2%	64.7%	64.4%	64.8%	62.9%
	SCOM	63.6%	65.2%	66.1%	71.9%	76.6%	76.6%
	SOCI	30.0%	69.2%	68.4%	40.0%	66.7%	57.1%
	SPAN			50.0%	66.7%	50.0%	60.0%
TCMS							
THAR	100.0%	100.0%	46.2%	63.6%	84.6%	33.3%	
Science	APMS	81.8%	46.7%	100.0%	54.5%	88.9%	33.3%
	BIOL	46.0%	46.2%	45.3%	46.2%	53.5%	52.7%
	BMCB	66.7%	63.2%	48.1%	51.3%	52.0%	69.0%
	BOTN		100.0%	100.0%	50.0%		
	CHEM	57.4%	59.6%	50.0%	58.7%	40.4%	64.0%
	MATH	68.8%	47.9%	64.6%	53.3%	47.1%	41.5%
	MBIO	54.7%	63.5%	60.8%	50.0%	39.4%	83.3%
	PHYS	53.3%	50.0%	40.0%	42.1%	53.6%	32.0%
	ZOOL	36.5%	52.5%	38.1%	46.6%	58.1%	38.7%
Veterinary Medicine	BIMS	59.2%	63.8%	62.6%	64.9%	60.4%	68.0%

Prepared by OISP, 19 Jun 03

First-Year MAJOR Retention for First-Time In College (FTIC) Students
(Students enrolled after one year in the same major which they declared as First-Time students)

1996-2001 Cohorts Retention within Major		Cohort Year - First Year Retained											
		Fall 1996 - Fall 1997		Fall 1997 - Fall 1998		Fall 1998 - Fall 1999		Fall 1999 - Fall 2000		Fall 2000 - Fall 2001		Fall 2001 - Fall 2002	
		Cohort	Retention	Cohort	Retention	Cohort	Retention	Cohort	Retention	Cohort	Retention	Cohort	Retention
		#	#	#	#	#	#	#	#	#	#	#	#
All Majors		6,356	4,111	6,217	4,057	7,354	4,595	6,692	4,267	6,618	4,244	6,645	4,264
Agriculture	ADEV	30	20	37	29	41	33	32	28	31	28	36	31
	AGBU	41	31	53	34	55	34	60	43	74	51	86	48
	AGEC	19	10	21	14	12	9	17	10	8	6	18	11
	AGED						1						
	AGEN	34	16	33	15	51	21	38	21	24	9	28	8
	AGJR	6	5	7	6	6	4	5	5	3	2	6	1
	AGLS	1		1		5	2	4	2	4	1	4	
	AGRO	7	5	5	3	4	3	9	7	4	3	8	7
	AGSC	12	10	4	2	5	3	10	7	21	19	9	9
	AGSM	8	3	1		7	7	7	4	8	6	4	2
	ANSC	125	93	125	95	137	109	106	82	113	87	110	88
	BESC	24	17	19	15	15	8	10	7	11	7	14	12
	BICH	96	53	70	44	68	40	61	31	58	33	41	27
	BSEN							4	3	2		5	4
	DASC	5	4	3	3	2	2	1	1	3	2		
	ENTO	8	7	6	5	4	3	2		1	1	3	3
	FLOR	1	1	1	1	1	1	1				2	2
	FORS	4	2	1	1	3	2	7	5	7	5	1	1
	FSTC	3	3	6	6	10	5	7	4	6	5	6	5
	GENE	83	54	65	41	55	38	50	32	45	30	38	25
	HORT	5	5	2	2	7	7	10	10	7	5	4	3
	NUSC	23	14	31	15	37	22	31	12	45	33	26	15
	POSC	16	15	18	15	12	9	7	7	11	8	8	4
	PSSC	1	1	2	2	2	1			1			
	RENR					1	1	2	1	1	1	1	1
	RLEM	2	2	5	4	4	2	7	7	4	4	5	4
	RPTS	5	4	9	6	7	6	8	8	7	5	10	7
WFSC	23	13	24	17	21	16	35	27	41	31	26	17	
Architecture	COSC	43	28	55	38	62	37	59	37	42	30	34	26
	ENDS	127	99	122	84	198	144	110	86	102	82	99	76
	LAND	18	12	17	10	15	9	22	16	14	11	9	5
Business Admin	AGBU	5	2	2	2	6	3	5	3	2	2	4	3
	BUAD	857	692	966	759	1,214	987	867	739	880	764	831	718
Education	HLTH	14	12	7	5	18	12	11	10	15	11	8	2
	IDTC							1		1			
	INST	122	94	151	117	164	121	170	132	181	145	186	145
	KINE	73	42	83	50	71	45	92	62	106	67	95	73

Prepared by OISP, 19 Jun 03

First-Year MAJOR Retention for First-Time In College (FTIC) Students
(Students enrolled after one year in the same major which they declared as First-Time students)

1996-2001 Cohorts Retention within Major		Cohort Year - First Year Retained											
		Fall 1996 - Fall 1997		Fall 1997 - Fall 1998		Fall 1998 - Fall 1999		Fall 1999 - Fall 2000		Fall 2000 - Fall 2001		Fall 2001 - Fall 2002	
		Cohort	Retention	Cohort	Retention	Cohort	Retention	Cohort	Retention	Cohort	Retention	Cohort	Retention
		#	#	#	#	#	#	#	#	#	#	#	#
Engineering	AERO	82	54	95	62	154	82	140	74	160	76	208	99
	BMEN	129	89	111	64	135	69	119	59	107	50	74	40
	CHEN	186	126	173	127	227	150	155	104	136	92	105	75
	CPEN	223	140	235	149	314	165	256	154	207	129	192	126
	CPSC	151	90	131	92	235	125	232	120	156	94	138	93
	CVEN	154	91	156	96	191	98	141	89	129	67	122	76
	ELEN	148	107	156	104	217	144	167	107	142	83	135	83
	ENTC	11	8	10	6	18	15	22	10	22	14	20	10
	IDIS	11	8	16	15	33	29	33	26	28	25	13	12
	INEN	28	19	31	18	44	24	32	19	32	19	27	19
	MEEN	274	207	269	195	370	249	279	162	227	141	207	131
	NUEN	8	2	11	9	11	8	18	12	23	12	25	13
	OCEN	9	2	7	2	15	6	7	4	11	6	5	4
	PETE	36	20	24	13	73	48	47	23	30	18	33	19
	PREN					20	8	72	38	95	42	112	54
	RHEN	4	1	2	1	3		4	1	5	3	1	1
	Geosciences	ESCI	1		3	1	1		3	1	2	1	1
GEOG		9	9	2	2	5	1	3	3	4	3	2	2
GEOL		6	5	8	6	17	4	12	8	13	8	11	7
GEOP		4	3	6	5	4	2	4	2	3	3	4	3
MARB		1											
General Studies	METR	25	9	31	15	49	21	43	26	38	16	41	17
	GEST	982	596	801	476	1,010	478	1,242	687	1,271	706	1,348	697
	GSEN	274	125	244	108								
Liberal Arts	TEAM											353	247
	ANTH	10	6	6	2	10	4	15	10	16	10	10	5
	ECON	9	7	15	10	14	5	17	7	17	14	19	12
	ENGL	54	42	58	36	46	34	69	54	50	35	51	40
	FREN	1								2	1	2	1
	GERM									1	1	2	2
	HIST	32	23	46	25	30	21	34	26	59	48	45	28
	INTS	30	24	30	20	24	19	41	31	32	26	31	22
	JOUR	55	33	62	37	88	61	116	83	112	62	97	46
	MODL	5		8	3	4	3	9		1			
	MUSC											3	2
	PHIL	3		6	4	2	1	4	2	6	3	8	6
	POLS	115	83	133	90	117	76	129	82	104	65	143	99
	PSYC	189	122	183	123	201	130	177	114	216	140	205	129
	SCOM	22	14	46	30	62	41	57	41	77	59	77	59
	SOCI	10	3	13	9	19	13	10	4	15	10	21	12
SPAN			1		2	1	3	2	8	4	5	3	
TCMS											2		
THAR	6	6	4	4	13	6	11	7	13	11	6	2	

First-Year MAJOR Retention for First-Time In College (FTIC) Students
(Students enrolled after one year in the same major which they declared as First-Time students)

1996-2001 Cohorts Retention within Major		Cohort Year - First Year Retained											
		Fall 1996 - Fall 1997		Fall 1997 - Fall 1998		Fall 1998 - Fall 1999		Fall 1999 - Fall 2000		Fall 2000 - Fall 2001		Fall 2001 - Fall 2002	
		Cohort	Retention	Cohort	Retention	Cohort	Retention	Cohort	Retention	Cohort	Retention	Cohort	Retention
		#	#	#	#	#	#	#	#	#	#	#	#
Science	APMS	11	9	15	7	8	8	11	6	9	8	12	4
	BIOL	313	144	251	116	285	129	292	135	299	160	279	147
	BMCB	21	14	19	12	27	13	39	20	25	13	29	20
	BOTN	2		1	1	1	1	2	1			1	
	CHEM	54	31	52	31	50	25	46	27	57	23	50	32
	MATH	48	33	48	23	48	31	45	24	68	32	53	22
	MBIO	53	29	52	33	51	31	32	16	33	13	18	15
	PHYS	30	16	10	5	25	10	19	8	28	15	25	8
ZOOL	63	23	59	31	63	24	58	27	43	25	31	12	
Veterinary Medicine	BIMS	623	369	625	399	697	436	558	362	603	364	478	325

Prepared by OISP, 19 Jun 03